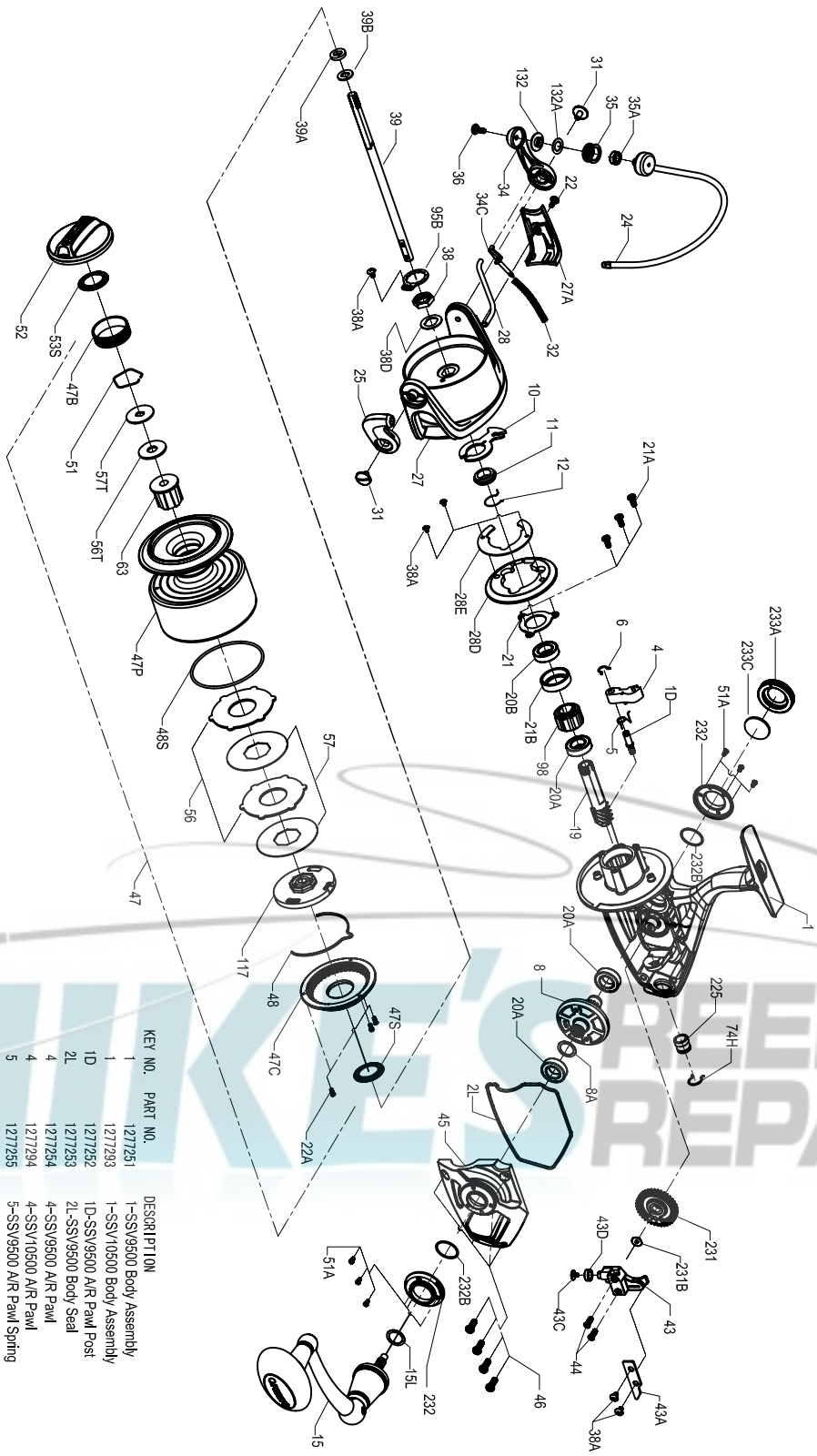




PARTS LIST FOR MODEL SSV9500/SSV10500



KEY NO.	PART NO.	DESCRIPTION	KEY NO.	PART NO.	DESCRIPTION
27	1271265	27-SSV9500 Rotor	27	1271265	27-SSV9500 Rotor
27A	1271296	27A-SSV10500 Rotor	27A	1271296	27A-SSV10500 Rotor
28	1271267	28-SSV9500 Rotor Cover	28	1271267	28-SSV9500 Rotor Cover
28D	1271288	28D-SSV9500 Ball Trip Lever	28D	1271288	28D-SSV9500 Ball Trip Lever
28E	1271297	28E-SSV10500 Rotor Brake	28E	1271297	28E-SSV10500 Rotor Brake
28F	1294661	28F-SSV9500 Rotor Brake Cover	28F	1294661	28F-SSV9500 Rotor Brake Cover
29	1271270	29-SSV10500 Rotor Brake Cover	29	1271270	29-SSV10500 Rotor Brake Cover
31	1271270	31-SSV9500 Ball Arm Screw (2 req.)	31	1271270	31-SSV9500 Ball Arm Screw (2 req.)
32	1271270	32-SSV9500 Ball Spring	32	1271270	32-SSV9500 Ball Spring
34	1271683	34-SSV7500 Ball Arm	34	1271683	34-SSV7500 Ball Arm
34C	1271164	34C-SSV7500 Pivot Arm	34C	1271164	34C-SSV7500 Pivot Arm
35	1271165	35-SSV7500 Line Roller	35	1271165	35-SSV7500 Line Roller
35A	1271060	35A-SSV9500 Line Roller Ball Bearing	35A	1271060	35A-SSV9500 Line Roller Ball Bearing
36	1271666	36-SSV7500 Line Roller Screw	36	1271666	36-SSV7500 Line Roller Screw
38	1271671	38-SSV7500 Rotor Nut	38	1271671	38-SSV7500 Rotor Nut
38A	1271063	38A-SSV9500 Rotor Nut Lock Plate Screw (5 req.)	38A	1271063	38A-SSV9500 Rotor Nut Lock Plate Screw (5 req.)
38D	1271168	38D-SSV7500 Rotor Washer	38D	1271168	38D-SSV7500 Rotor Washer
39	1271271	39-SSV9500 Main Shaft	39	1271271	39-SSV9500 Main Shaft
39A	1288190	39A-SSV9500 Spool Adjust Washer	39A	1288190	39A-SSV9500 Spool Adjust Washer
39B	1288191	39B-SSV9500 Main Shaft Washer	39B	1288191	39B-SSV9500 Main Shaft Washer
43	1271212	43-SSV9500 Oscillation Slider	43	1271212	43-SSV9500 Oscillation Slider
43A	1271213	43A-SSV9500 Oscillation Slider Guide	43A	1271213	43A-SSV9500 Oscillation Slider Guide
43C	1271071	43C-SSV9500 Oscillation Slider Bushing	43C	1271071	43C-SSV9500 Oscillation Slider Bushing
43D	1279467	43D-SSV3500 Oscillation Slider Bushing	43D	1279467	43D-SSV3500 Oscillation Slider Bushing
44	1271174	44-SSV7500 Main Shaft Screw (2 req.)	44	1271174	44-SSV7500 Main Shaft Screw (2 req.)
45	1271214	45-SSV9500 Body Cover	45	1271214	45-SSV9500 Body Cover
45	1271298	45-SSV10500 Body Cover	45	1271298	45-SSV10500 Body Cover
46	1271215	46-SSV9500 Body Cover Screw (4 req.)	46	1271215	46-SSV9500 Body Cover Screw (4 req.)
47	1271216	47-SSV9500 Spool Assembly	47	1271216	47-SSV9500 Spool Assembly
47	127299	47-SSV10500 Spool Assembly	47	127299	47-SSV10500 Spool Assembly
47B	1271208	47B-SSV8500 Spool Band	47B	1271208	47B-SSV8500 Spool Band
47C	1271217	47C-SSV9500 Drag Cover	47C	1271217	47C-SSV9500 Drag Cover
47P	1271219	47P-SSV9500 Spool	47P	1271219	47P-SSV9500 Spool
47S	1271280	47S-SSV9500 Drag Drive Plate Seal	47S	1271280	47S-SSV9500 Drag Drive Plate Seal
48	1271281	48-SSV9500 Drag Cover Seal	48	1271281	48-SSV9500 Drag Cover Seal
48S	1271282	48S-SSV9500 Drag Cover Seal	48S	1271282	48S-SSV9500 Drag Cover Seal
51	1271085	51-SSV6500 Drag Washer Retainer	51	1271085	51-SSV6500 Drag Washer Retainer
51A	127183	51A-SSV7500 Bearing Retainer Screw (6 req.)	51A	127183	51A-SSV7500 Bearing Retainer Screw (6 req.)
52	1271283	52-SSV9500 Drag Knob Assembly	52	1271283	52-SSV9500 Drag Knob Assembly
52	1271302	52-SSV10500 Drag Knob Assembly	52	1271302	52-SSV10500 Drag Knob Assembly
53S	1294253	53S-SSV7500 Drag Knob Seal	53S	1294253	53S-SSV7500 Drag Knob Seal
56	1271284	56-SSV9500 Drag Friction Washer (2 req.)	56	1271284	56-SSV9500 Drag Friction Washer (2 req.)
57	1271089	57-SSV500 Drag Friction Washer	57	1271089	57-SSV500 Drag Friction Washer
57T	1271187	57T-SSV7500 Keyed Drag Washer (2 req.)	57T	1271187	57T-SSV7500 Keyed Drag Washer (2 req.)
63	1271285	63-SSV9300 Spool Bushing	63	1271285	63-SSV9300 Spool Bushing
74H	1271287	74H-SSV9500 Rear Bushing E-Clip	74H	1271287	74H-SSV9500 Rear Bushing E-Clip
98B	1271189	98B-SSV7500 Rotor Nut Locking Plate	98B	1271189	98B-SSV7500 Rotor Nut Locking Plate
98	1271190	98-SSV7500 Clutch / Sleeve Assembly	98	1271190	98-SSV7500 Clutch / Sleeve Assembly
117	1271288	117-SSV9500 Drag Drive Plate	117	1271288	117-SSV9500 Drag Drive Plate
132	1271192	132-SSV7500 Line Roller Collar	132	1271192	132-SSV7500 Line Roller Collar
132A	1271097	132A-SSV6500 Line Roller Washer	132A	1271097	132A-SSV6500 Line Roller Washer
225	1271289	225-SSV9500 Rear Bushing	225	1271289	225-SSV9500 Rear Bushing
231	1271290	231-SSV9500 Oscillation Gear Screw	231	1271290	231-SSV9500 Oscillation Gear Screw
231B	1271062	231B-SSV6500 Oscillation Gear Screw	231B	1271062	231B-SSV6500 Oscillation Gear Screw
232	1271292	232-SSV9500 Bearing Retainer (2 req.)	232	1271292	232-SSV9500 Bearing Retainer (2 req.)
232A	1271303	232A-SSV10500 Bearing Retainer (2 req.)	232A	1271303	232A-SSV10500 Bearing Retainer (2 req.)
232B	1305063	232B-SSV7500 Bearing Retainer O-Ring (2 req.)	232B	1305063	232B-SSV7500 Bearing Retainer O-Ring (2 req.)
233A	1271196	233A-SSV7500 Handle Cap	233A	1271196	233A-SSV7500 Handle Cap
233C	1271157	233C-SSV7500 Handle Cap Washer	233C	1271157	233C-SSV7500 Handle Cap Washer