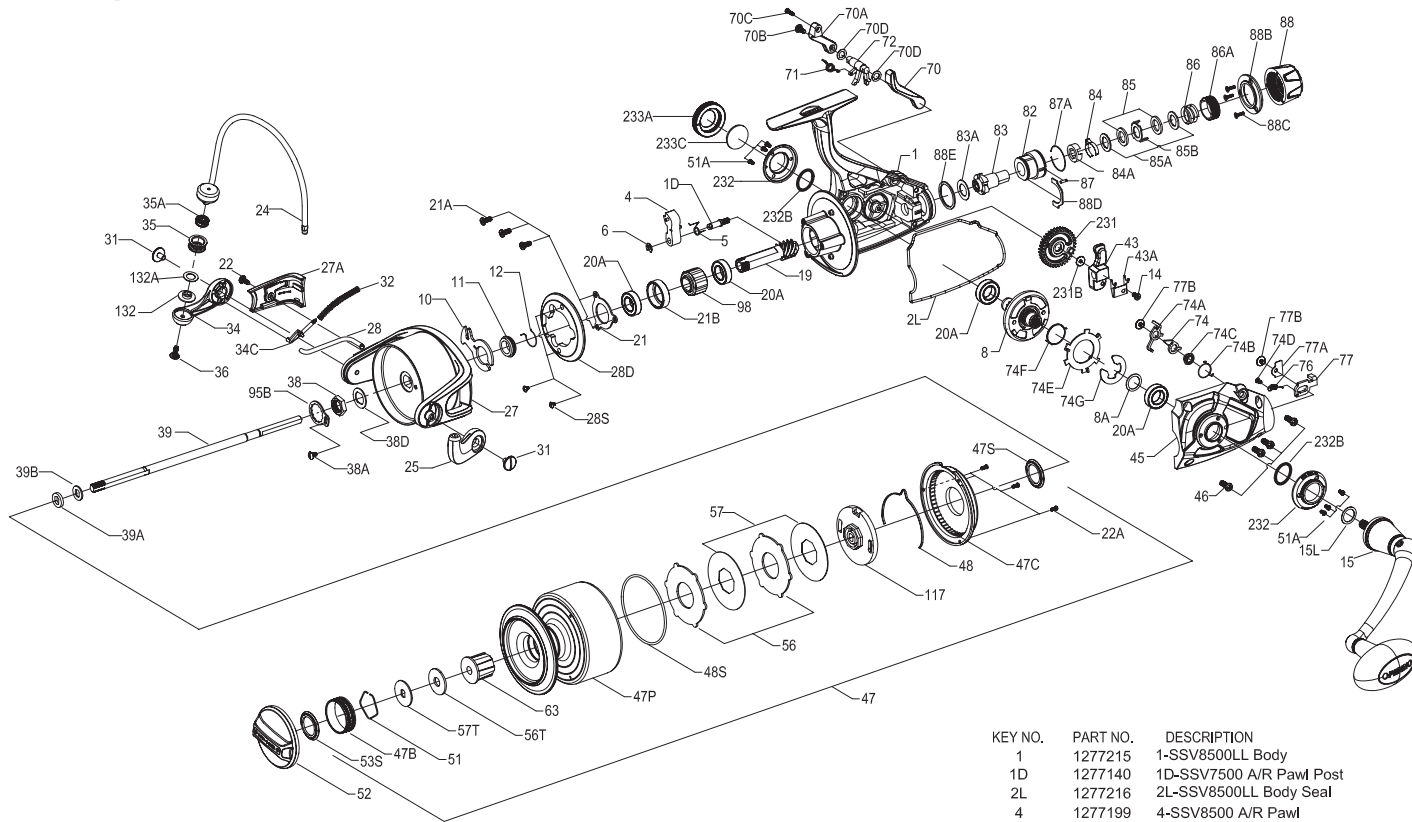




# PARTS LIST FOR MODEL SSV8500LL



KEY NO.	PART NO.	DESCRIPTION
34	1277163	34-SSV7500 Bail Arm
34C	1277164	34C-SSV7500 Pivot Arm
35	1277165	35-SSV7500 Line Roller
35A	1277060	35A-SSV5500 Line Roller Ball Bearing
36	1277166	36-SSV7500 Line Roller Screw
38	1277167	38-SSV7500 Rotor Nut
38A	1277063	38A-SSV5500 Rotor Nut Lock Plate Screw
38D	1277168	38D-SSV7500 Rotor Washer
39	1277219	39-SSV8500LL Main Shaft
39A	1277170	39A-SSV7500 Spool Adjust Washer
39B	1277171	39B-SSV7500 Main Shaft Washer
43	1277220	43-SSV8500LL Oscillation Slider
43A	1277221	43A-SSV8500LL Oscillation Slider Guide
45	1277222	45-SSV8500LL Body Cover
46	1277176	46-SSV7500 Body Cover Screw (4 req.)
47	1277223	47-SSV8500LL Spool Assembly
47B	1277208	47B-SSV8500 Spool Band
47C	1277178	47C-SSV7500 Drag Cover
47P	1277224	47P-SSV8500LL Spool
47S	1277082	47S-SSV7500 Drag Drive Plate Seal
48	1277181	48-SSV7500 Spool Clicker
48S	1277182	48S-SSV7500 Drag Cover Seal
51	1277085	51-SSV5500 Drag Washer Retainer
51A	1277183	51A-SSV7500 Bearing Retainer Screw (6 req.)
52	1277211	52-SSV8500 Drag Knob Assembly
53S	1293253	53S-SSV7500 Drag Knob Seal
56	1277185	56-SSV7500 Drag Friction Washer (2 req.)
56T	1277089	56T-SSV5500 Drag Friction Washer
57	1277186	57-SSV7500 Keyed Drag Washer (2 req.)
57T	1277187	57T-SSV7500 Keyed Drag Washer
63	1277212	63-SSV8500 Spool Bushing
70	1277225	70-SSV8500LL Live Liner Drag Switch Lever (Left)
70A	1277226	70A-SSV8500LL Live Liner Drag Switch Lever (Right)
70B	1277128	70B-SSV6500LL Live Liner Drag Switch Lever Screw
70C	1277003	70C-SSV4500LL Live Liner Drag Switch Lever Screw
70D	1301988	70D-SSV8500LL LL Lever Seal (2 req.)
71	1277227	71-SSV8500LL Live Liner Lever Spring
72	1277228	72-SSV8500LL Live Liner Drag Switch Cam
74	1277007	74-SSV4500LL Live Liner Trip Lever (A)
74A	1277229	74A-SSV8500LL Live Liner Trip Lever (B)
74B	1277009	74B-SSV4500LL Live Liner Trip Lever Spring
74C	1277010	74C-SSV4500LL Live Liner Trip Lever Bushing
74D	1277011	74D-SSV4500LL Live Liner Stop Claw Spring Screw
74E	1277230	74E-SSV8500LL Live Liner Three Pawl Lever
74F	1277231	74F-SSV8500LL Live Liner Three Pawl Lever Spring
74G	1277232	74G-SSV8500LL Live Liner Three Pawl Lever E-Clip
76	1277134	76-SSV6500LL Live Liner Claw Spring
77	1277233	77-SSV8500LL Live Liner Stop Claw
77A	1277234	77A-SSV8500LL Live Liner Stop Claw Spring
77B	1289972	77B-SSV4500LL Live Liner Plate Screw (2 req.)
82	1277235	82-SSV8500LL Rear Drag Housing
83	1277236	83-SSV8500LL Rear Drag Ratchet
83A	1277237	83A-SSV8500LL Rear Drag Ratchet Washer
84	1277238	84-SSV8500LL Rear Drag Clicker
84A	1277239	84A-SSV8500LL Rear Drag Clicker Retainer
85	1277240	85-SSV8500LL Rear Drag Washer(2 req.)
85A	1277241	85A-SSV8500LL Rear Drag Keyed Washer(2 req.)
85B	1277242	85B-SSV8500LL Rear Drag Eared Washer
86	1277243	86-SSV8500LL Rear Drag Spring
86A	1277244	86A-SSV8500LL Rear Drag Nut
87	1277027	87-SSV4500LL Rear Drag Knob Clicker
87A	1277245	87A-SSV8500LL Rear Drag Knob Clicker Ring
88	1277246	88-SSV8500LL Rear Drag Knob
88B	1277247	88B-SSV8500LL Rear Drag Knob Ring
88C	1277248	88C-SSV8500LL Rear Drag Knob Ring Screw (3 req.)
88D	1277249	88D-SSV8500LL Rear Drag Knob Retainer
88E	1277250	88E-SSV8500LL Rear Drag Knob Seal
95B	1277189	95B-SSV7500 Rotor Nut Locking Plate
98	1277190	98-SSV7500 Clutch / Sleeve Assembly
117	1277191	117-SSV7500 Drag Drive Plate
132	1277192	132-SSV7500 Line Roller Collar
132A	1277097	132A-SSV5500 Line Roller Washer
231	1277213	231-SSV8500 Oscillation Gear
231B	1277100	231B-SSV5500 Oscillation Gear Screw
232	1277214	232-SSV8500 Bearing Retainer (2 req.)
232B	1277214	232B-SSV8500 Bearing Retainer (2 req.)
232B	1302503	232B-SSV7500 Bearing Retainer O - Ring (2 req.)
233A	1277196	233A-SSV7500 Handle Cap
233C	1277197	233C-SSV7500 Handle Cap Washer

KEY NO.	PART NO.	DESCRIPTION
1	1277215	1-SSV8500LL Body
1D	1277140	1D-SSV7500 A/R Pawl Post
2L	1277216	2L-SSV8500LL Body Seal
4	1277199	4-SSV8500 A/R Pawl
5	1277143	5-SSV7500 A/R Pawl Spring
6	1277144	6-SSV7500 Retainer Clip
8	1277217	8-SSV8500LL Drive Gear
8A	1277146	8A-SSV7500 Drive Gear Shim Washer
10	1277147	10-SSV7500 A/R Pawl Holder
11	1277148	11-SSV7500 A/R Bushing
12	1277149	12-SSV7500 A/R Bushing Spring
14	1276992	14-SSV6500LL Oscillation Slider Retainer Screw
15	1277150	15-SSV7500 Handle Assembly
15L	1292784	15L-SSV7500 Handle Seal
19	1277218	19-SSV8500LL Pinion Gear
20A	1277152	20A-SSV7500 Ball Bearing (4 req.)
21	1277153	21-SSV7500 Pinion Bearing Retainer
21A	1277154	21A-SSV7500 Pinion Retainer Screw (3 req.)
21B	1277155	21B-SSV7500 Pinion Ball Bearing Collar
22	1277046	22-SSV5500 Rotor Cover Screw
22A	1277047	22A-SSV5500 Drag Cover Screw (3 req.)
24	1277200	24-SSV8500 Bail Assembly
25	1277157	25-SSV7500 Bail Holder
27	1277201	27-SSV8500 Rotor
27A	1277202	27A-SSV8500 Rotor Cover
28	1277203	28-SSV8500 Bail Trip Lever
28D	1277204	28D-SSV8500 Rotor Brake
28S	1277054	28S-SSV5500 Rotor Brake Screw (2 req.)
31	1277055	31-SSV5500 Bail Arm Screw (2 req.)
32	1277162	32-SSV7500 Bail Spring