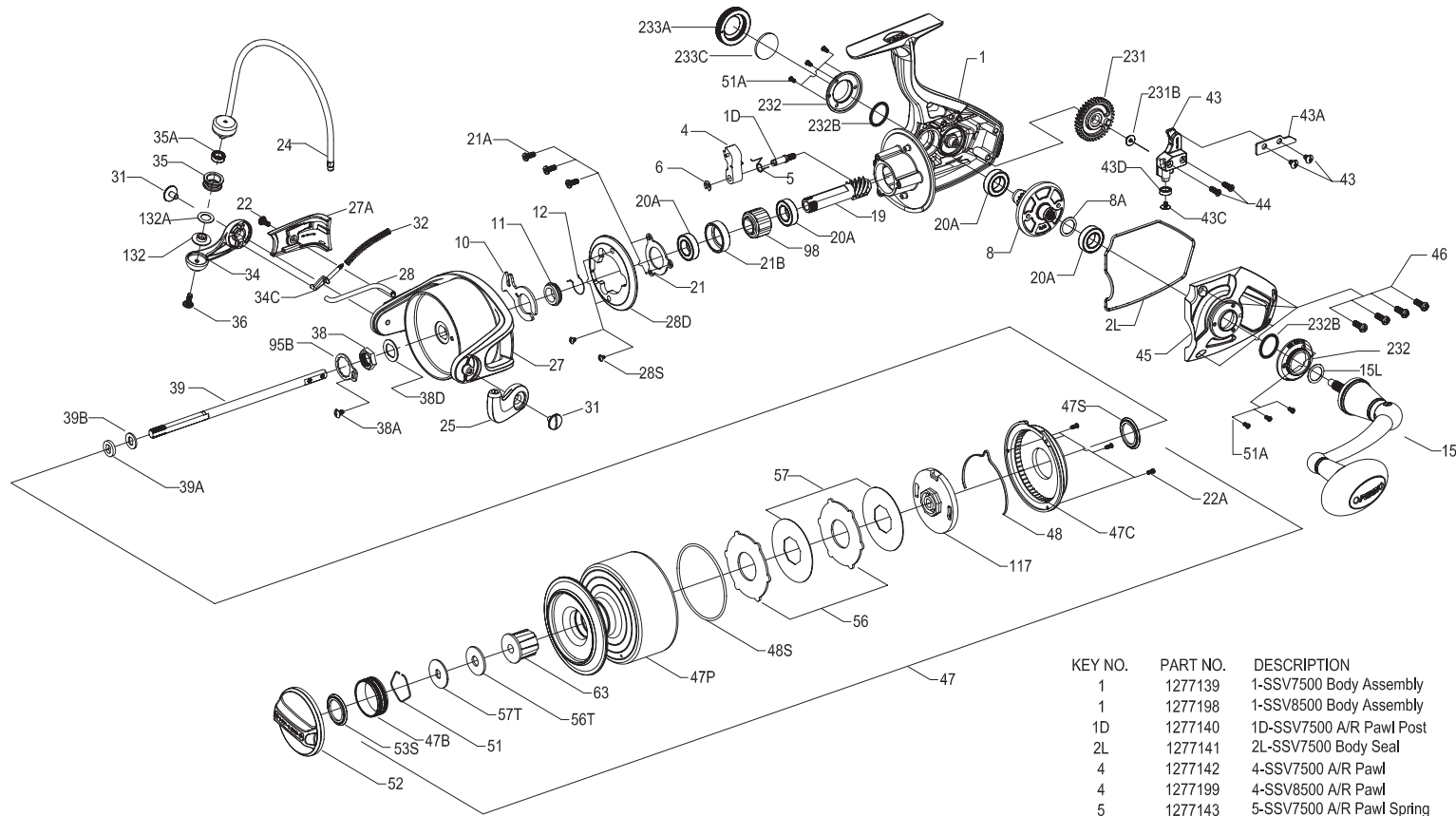




PARTS LIST FOR MODEL SSV7500/SSV8500



KEY NO.	PART NO.	DESCRIPTION
27A	1277159	27A-SSV7500 Rotor Cover
27A	1277202	27A-SSV8500 Rotor Cover
28	1277160	28-SSV7500 Bail Trip Lever
28	1277203	28-SSV8500 Bail Trip Lever
28D	1277161	28D-SSV7500 Rotor Brake
28D	1277204	28D-SSV8500 Rotor Brake
28S	1277054	28S-SSV5500 Rotor Brake Screw (2 req.)
31	1277055	31-SSV5500 Bail Arm Screw (2 req.)
32	1277162	32-SSV7500 Bail Spring
34	1277163	34-SSV7500 Bail Arm
34C	1277164	34C-SSV7500 Pivot Arm
35	1277165	35-SSV7500 Line Roller
35A	1277060	35A-SSV5500 Line Roller Ball Bearing
36	1277166	36-SSV7500 Line Roller Screw
38	1277167	38-SSV7500 Rotor Nut
38A	1277063	38A-SSV5500 Rotor Nut Lock Plate Screw
38D	1277168	38D-SSV7500 Rotor Washer
39	1277169	39-SSV7500 Main Shaft
39	1277205	39-SSV8500 Main Shaft
39A	1277170	39A-SSV7500 Spool Adjust Washer
39B	1277171	39B-SSV7500 Main Shaft Washer
43	1277172	43-SSV7500 Oscillation Slider
43A	1277173	43A-SSV7500 Oscillation Slider Guide
43B	1277070	43B-SSV5500 Oscillation Slider Guide Screw (2 req.)
43C	1277071	43C-SSV5500 Oscillation Slider Bushing Screw
43D	1279457	43D-SSV3500 Oscillation Slider Bushing
44	1277174	44-SSV7500 Main Shaft Screw (2 req.)
45	1277175	45-SSV7500 Body Cover
45	1277206	45-SSV8500 Body Cover
46	1277176	46-SSV7500 Body Cover Screw (4 req.)
47	1277177	47-SSV7500 Spool Assembly
47	1277207	47-SSV8500 Spool Assembly
47B	1277076	47B-SSV5500 Spool Band
47B	1277208	47B-SSV8500 Spool Band
47C	1277178	47C-SSV7500 Drag Cover
47P	1277180	47P-SSV7500 Spool
47P	1277210	47P-SSV8500 Spool
47S	1277082	47S-SSV5500 Drag Drive Plate Seal
48	1277181	48-SSV7500 Spool Clicker
48S	1277182	48S-SSV7500 Drag Cover Seal
51	1277085	51-SSV5500 Drag Washer Retainer
51A	1277183	51A-SSV7500 Bearing Retainer Screw (6 req.)
52	1277184	52-SSV7500 Drag Knob Assembly
52	1277211	52-SSV8500 Drag Knob Assembly
53S	1293253	53S-SSV7500 Drag Knob Seal
56	1277185	56-SSV7500 Drag Friction Washer (2 req.)
56T	1277089	56T-SSV5500 Drag Friction Washer
57	1277186	57-SSV7500 Keyed Drag Washer (2 req.)
57T	1277187	57T-SSV7500 Keyed Drag Washer
63	1277188	63-SSV7500 Spool Bushing
63	1277212	63-SSV8500 Spool Bushing
95B	1277189	95B-SSV7500 Rotor Nut Locking Plate
98	1277190	98-SSV7500 Clutch / Sleeve Assembly
117	1277191	117-SSV7500 Drag Drive Plate
132	1277192	132-SSV7500 Line Roller Collar
132A	1277097	132A-SSV5500 Line Roller Washer
231	1277193	231-SSV7500 Oscillation Gear
231	1277213	231-SSV8500 Oscillation Gear
231B	1277100	231B-SSV5500 Oscillation Gear Screw
232	1277194	232-SSV7500 Bearing Retainer (2 req.)
232	1277214	232-SSV8500 Bearing Retainer (2 req.)
232B	1302503	232B-SSV7500 Bearing Retainer O - Ring (2 req.)
233A	1277196	233A-SSV7500 Handle Cap
233C	1277197	233C-SSV7500 Handle Cap Washer

KEY NO.	PART NO.	DESCRIPTION
1	1277139	1-SSV7500 Body Assembly
1	1277198	1-SSV8500 Body Assembly
1D	1277140	1D-SSV7500 A/R Pawl Post
2L	1277141	2L-SSV7500 Body Seal
4	1277142	4-SSV7500 A/R Pawl
4	1277199	4-SSV8500 A/R Pawl
5	1277143	5-SSV7500 A/R Pawl Spring
6	1277144	6-SSV7500 Retainer Clip
8	1277145	8-SSV7500 Drive Gear
8A	1277146	8A-SSV7500 Drive Gear Shim Washer
10	1277147	10-SSV7500 A/R Pawl Holder
11	1277148	11-SSV7500 A/R Bushing
12	1277149	12-SSV7500 A/R Bushing Spring
15	1277150	15-SSV7500 Handle Assembly
15L	1292784	15L-SSV7500 Handle Seal
19	1277151	19-SSV7500 Pinion Gear
20A	1277152	20A-SSV7500 Ball Bearing (4 req.)
21	1277153	21-SSV7500 Pinion Bearing Retainer
21A	1277154	21A-SSV7500 Pinion Retainer Screw (3 req.)
21B	1277155	21B-SSV7500 Pinion Ball Bearing Collar
22	1277046	22-SSV5500 Rotor Cover Screw
22A	1277047	22A-SSV5500 Drag Cover Screw (3 req.)
24	1277156	24-SSV7500 Bail Assembly
24	1277200	24-SSV8500 Bail Assembly
25	1277157	25-SSV7500 Bail Holder
27	1277158	27-SSV7500 Rotor
27	1277201	27-SSV8500 Rotor