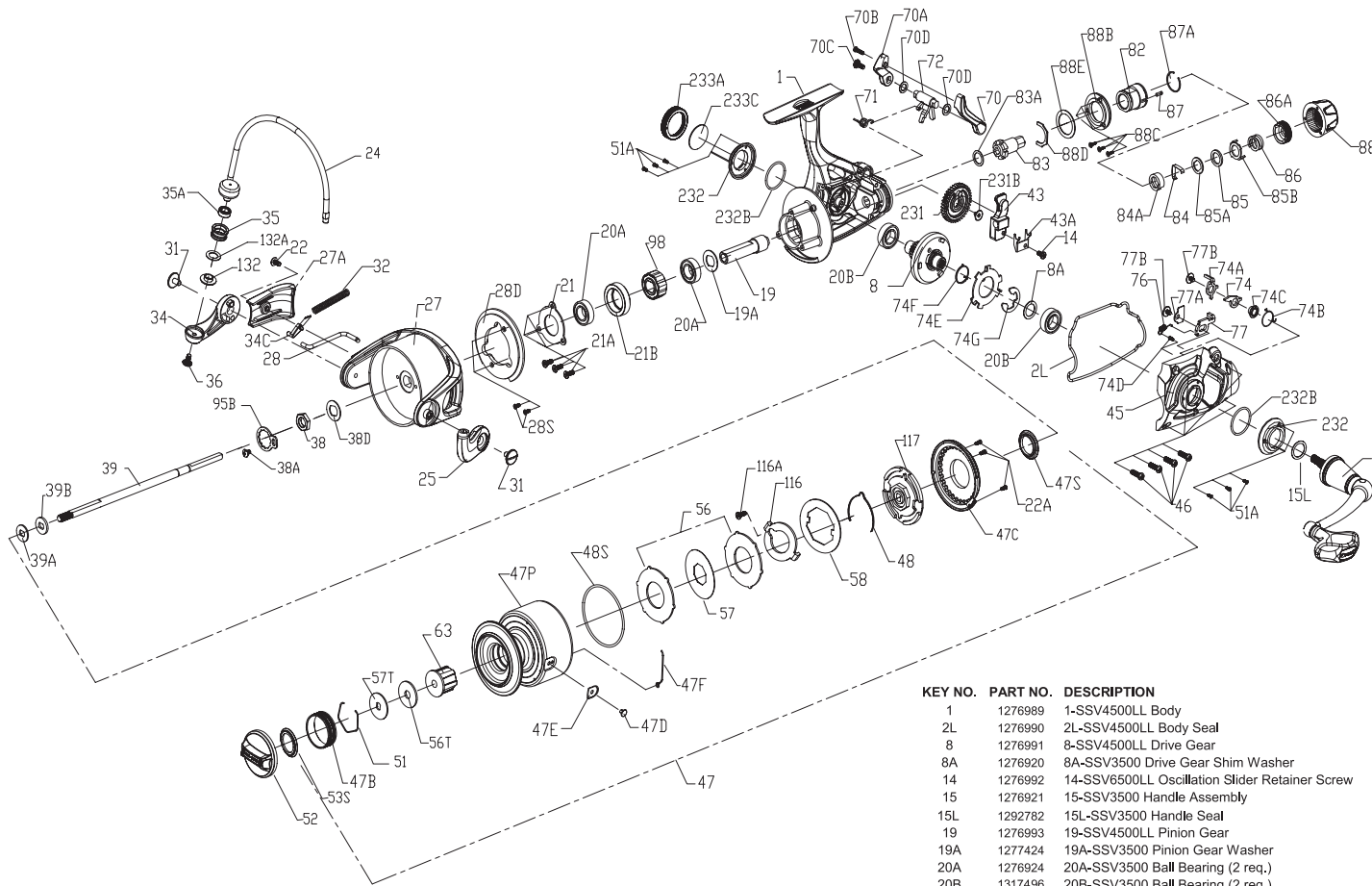




PARTS LIST FOR MODEL SSV4500LL



KEY NO.	PART NO.	DESCRIPTION
39	1276994	39-SSV4500LL Main Shaft
39A	1276944	39A-SSV3500 Spool Adjust Washer
39B	1276945	39B-SSV3500 Main Shaft Washer
43	1276995	43-SSV4500LL Oscillation Slider
43A	1276996	43A-SSV4500LL Oscillation Slider Guide
45	1276997	45-SSV4500LL Body Cover
46	1276949	46-SSV3500 Body Cover Screw (4 req.)
47	1276998	47-SSV4500LL Spool Assembly
47B	1277076	47B-SSV5500 Spool Band
47C	1276952	47C-SSV3500 Drag Cover
47D	1276953	47D-SSV3500 Line Clip
47E	1276954	47E-SSV3500 Line Clip Bushing
47F	1276983	47F-SSV4500 Line Clip Retainer
47P	1276999	47P-SSV4500LL Spool
47S	1277082	47S-SSV5500 Drag Drive Plate Seal
48	1276957	48-SSV3500 Spool Clicker
48S	1276958	48S-SSV3500 Drag Cover Seal
51	1277085	51-SSV5500 Drag Washer Retainer
51A	1277086	51A-SSV5500 Bearing Retainer Screw (6 req.)
52	1276960	52-SSV3500 Drag Knob Assembly
53S	1293250	53S-SSV3500 Drag Knob Seal
56	1276961	56-SSV3500 Drag Friction Washer (2 req.)
56T	1277089	56T-SSV5500 Drag Friction Washer
57	1276963	57-SSV3500 Keyed Drag Washer
57T	1276985	57T-SSV4500 Keyed Drag Washer
58	1290705	58-SSV3500 Drag Eared Washer
63	1276986	63-SSV4500 Spool Bushing
70	1277000	70-SSV4500LL Live Liner Drag Switch Lever (Left)
70A	1277001	70A-SSV4500LL Live Liner Drag Switch Lever (Right)
70B	1277002	70B-SSV4500LL Live Liner Drag Switch Lever Screw
70C	1277003	70C-SSV4500LL Live Liner Drag Switch Lever Screw
70D	1277004	70D-SSV4500LL LL Lever Seal (2 req.)
71	1277005	71-SSV4500LL Live Liner Lever Spring
72	1277006	72-SSV4500LL Live Liner Drag Switch Cam
74	1277007	74-SSV4500LL Live Liner Trip Lever (A)
74A	1277008	74A-SSV4500LL Live Liner Trip Lever (B)
74B	1277009	74B-SSV4500LL Live Liner Trip Lever Spring
74C	1277010	74C-SSV4500LL Live Liner Trip Lever Bushing
74D	1277011	74D-SSV4500LL Live Liner Stop Claw Spring Screw
74E	1277012	74E-SSV4500LL Live Liner Three Pawl Lever
74F	1277013	74F-SSV4500LL Live Liner Three Pawl Lever Spring
74G	1277014	74G-SSV4500LL Live Liner Three Pawl Lever E-Clip
76	1277134	76-SSV6500LL Live Liner Claw Spring
77	1277015	77-SSV4500LL Live Liner Stop Claw
77A	1277016	77A-SSV4500LL Live Liner Plate
77B	1289972	77B-SSV4500LL Live Liner Plate Screw(2 req.)
82	1277017	82-SSV4500LL Rear Drag Housing
83	1277018	83-SSV4500LL Rear Drag Ratchet
83A	1277019	83A-SSV4500LL Rear Drag Ratchet Washer
84	1277020	84-SSV4500LL Rear Drag Clicker
84A	1277021	84A-SSV4500LL Rear Drag Clicker Retainer
85	1277022	85-SSV4500LL Rear Drag Washer
85A	1277023	85A-SSV4500LL Rear Drag Keyed Washer
85B	1277024	85B-SSV4500LL Rear Drag Eared Washer
86	1277025	86-SSV4500LL Rear Drag Spring
86A	1277026	86A-SSV4500LL Rear Drag Nut
87	1277027	87-SSV4500LL Rear Drag Knob Clicker
87A	1277028	87A-SSV4500LL Rear Drag Knob Clicker Ring
88	1277029	88-SSV4500LL Rear Drag Knob
88B	1277030	88B-SSV4500LL Rear Drag Knob Ring
88C	1277031	88C-SSV4500LL Rear Drag Knob Ring Screw (3 req.)
88D	1277032	88D-SSV4500LL Rear Drag Knob Retainer
88E	1277033	88E-SSV4500LL Rear Drag Knob Seal
95B	1277093	95B-SSV5500 Rotor Nut Locking Plate
98	1276966	98-SSV3500 Clutch / Sleeve Assembly
116	1279458	116-SSV3500 Keyed Drag Washer Lock Plate
116A	1279509	116A-SSV3500 Keyed Drag Washer Lock Plate Screw
117	1276967	117-SSV3500 Drag Drive Plate
132	1277096	132-SSV5500 Line Roller Collar
132A	1277097	132A-SSV5500 Line Roller Washer
231	1276987	231-SSV4500 Oscillation Gear
231B	1307857	231B-SSV3500 Oscillation Gear Screw
232	1276988	232-SSV4500 Bearing Retainer (2 req.)
232B	1302502	232B-SSV3500 Bearing Retainer O - Ring (2 req.)
233A	1276972	233A-SSV3500 Handle Cap
233C	1276973	233C-SSV3500 Handle Cap Washer

KEY NO.	PART NO.	DESCRIPTION
1	1276989	1-SSV4500LL Body
2L	1276990	2L-SSV4500LL Body Seal
8	1276991	8-SSV4500LL Drive Gear
8A	1276920	8A-SSV3500 Drive Gear Shim Washer
14	1276992	14-SSV6500LL Oscillation Slider Retainer Screw
15	1276921	15-SSV3500 Handle Assembly
15L	1292782	15L-SSV3500 Handle Seal
19	1276993	19-SSV4500LL Pinion Gear
19A	1277424	19A-SSV3500 Pinion Gear Washer
20A	1276924	20A-SSV3500 Ball Bearing (2 req.)
20B	1317496	20B-SSV3500 Ball Bearing (2 req.)
21	1276925	21-SSV3500 Pinion Bearing Retainer
21A	1276926	21A-SSV3500 Pinion Retainer Screw (3 req.)
21B	1276927	21B-SSV3500 Pinion Ball Bearing Collar
22	1276928	22-SSV3500 Rotor Cover Screw
22A	1277047	22A-SSV5500 Drag Cover Screw (3 req.)
24	1276975	24-SSV4500 Bail Assembly
25	1276930	25-SSV3500 Bail Holder
27	1276976	27-SSV4500 Rotor
27A	1276977	27A-SSV4500 Rotor Cover
28	1276978	28-SSV4500 Bail Trip Lever
28D	1276979	28D-SSV4500 Rotor Brake
28S	1276935	28S-SSV3500 Rotor Brake Screw(2 req.)
31	1276936	31-SSV3500 Bail Arm Screw (2 req.)
32	1276937	32-SSV3500 Bail Spring
34	1276938	34-SSV3500 Bail Arm
34C	1277058	34C-SSV5500 Pivot Arm
35	1276939	35-SSV3500 Line Roller
35A	1276940	35A-SSV3500 Line Roller Ball Bearing
36	1277061	36-SSV5500 Line Roller Screw
38	1276941	38-SSV3500 Rotor Nut
38A	1277063	38A-SSV5500 Rotor Nut Lock Plate Screw
38D	1276942	38D-SSV3500 Rotor Washer