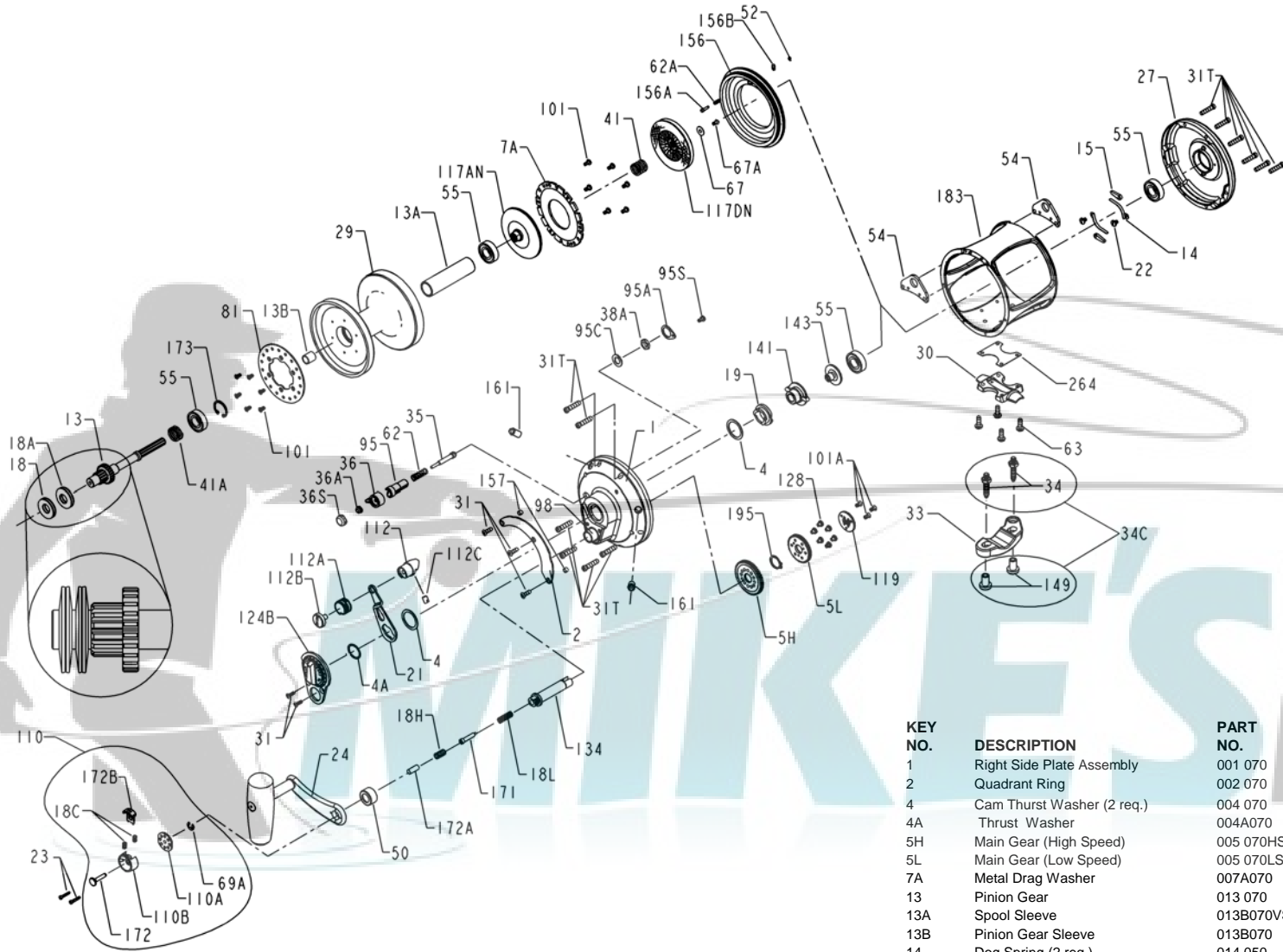




PARTS LIST FOR MODEL 70VS Before Serial Number C060700



| KEY NO. | DESCRIPTION | PART NO. |
|---------|-----------------------------------|-----------|
| 29 | Spool | 029L070 |
| 30 | Stand | 030 050 |
| 31 | Short Screw (5 req.) | 031T070 |
| 31T | Side Plate Screw (12 req.) | 031T080 |
| 33 | Rod Clamp | 033 070 |
| 34 | Clamp Screw (2 req.) | 034 070 |
| 34C | Rod Clamp Screw w/Nut | 034C070 |
| 35 | Click Tongue | 035 070 |
| 36 | Click Button | 036N050 |
| 36A | Click Button Nut | 036 700 |
| 36S | Click Button Cap | 036S080ST |
| 38A | Click Bushing Nut | 038 710 |
| 41 | Bearing Spring | 041 050 |
| 41A | Drag Spring | 041 070 |
| 50 | Shield | 050 080ST |
| 52 | Retaining Ring | 052 910 |
| 54 | Harness Lug (2 req.) | 054A080S |
| 55 | Ball Bearing (4 req.) | 055 080 |
| 62 | Click Spring | 062 050 |
| 62A | Click Spring | 062 545 |
| 63 | Stand Screw (4 req.) | 063 030T |
| 67 | Pinion Gear Washer | 067 070 |
| 67A | Retaining Screw | 067A070 |
| 69A | Retaining Ring | 069B030S |
| 81 | Ratchet | 081 070 |
| 95 | Click Tongue Bushing | 095 070 |
| 95A | Retaining Plate | 095B070 |
| 95C | Click Bushing Washer | 095A050 |
| 95S | Retaining Plate Screw | 046A704 |
| 98 | Bridge Bushing | 098 070 |
| 101 | Ratchet Screw (12 req.) | 101 030 |
| 101A | Coupling Plate Screws (3 req.) | 101 050S |
| 110 | Shift Assembly | 110 015KG |
| 110A | Handle Locking Plate | 110A015KG |
| 110B | Shift Housing | 110B015KG |
| 112 | Eccentric Lever Knob | 112 070 |
| 112A | Knob Sleeve | 112A070 |
| 112B | Eccentric Knob Screw | 112B070 |
| 112C | Plug | 112C070 |
| 117AN | Retaining Plate w/ Drag Washer | 117AN070 |
| 117DN | Drive Plate w/ Drag Washer | 117DN070 |
| 119 | Coupling Plate | 119 015KG |
| 124B | Bridge Cover Assembly | 124L070 |
| 128 | Low Gear Pins (6 req.) | 128 080ST |
| 134 | Gear Stud | 134 070 |
| 141 | Cam Follower | 141 070 |
| 143 | Preset Screw | 143 070 |
| 149 | Rod Clamp Nut (2 req.) | 149 070 |
| 156 | Drag Cover | 156 070 |
| 156A | Lock Pin | 156A030VS |
| 156B | Lock Plate | 156B030VS |
| 157 | Quadrant Spacing Bushing (2 req.) | 157S012LT |
| 161 | Locating Pin Assembly (2 req.) | 161C070 |
| 162 | Locating Pin Spring (2 req.) | 162 050 |
| 171 | Shift Plunger | 171 015KG |
| 172 | Shift Button (Low) | 172 015KG |
| 172A | Spring Spacer | 172A070 |
| 172B | Shift Button (High) | 172B015KG |
| 173 | Retaining Ring | 173 080VS |
| 183 | Tube Frame | 183 070 |
| 195 | Retaining Ring | 195 600 |
| 264 | Stand Gasket | 264 30T |
| 1 | Right Side Plate Assembly | 001 070 |
| 2 | Quadrant Ring | 002 070 |
| 4 | Cam Thrust Washer (2 req.) | 004 070 |
| 4A | Thrust Washer | 004A070 |
| 5H | Main Gear (High Speed) | 005 070HS |
| 5L | Main Gear (Low Speed) | 005 070LS |
| 7A | Metal Drag Washer | 007A070 |
| 13 | Pinion Gear | 013 070 |
| 13A | Spool Sleeve | 013B070VS |
| 13B | Pinion Gear Sleeve | 013B070 |
| 14 | Dog Spring (2 req.) | 014 050 |
| 15 | Dog | 015 050 |
| 18 | Disc Clutch Spring (2 req.) | 018 080 |
| 18A | Disc Clutch Spring (2 req.) | 018 080W |
| 18C | Shift Button Spring (2 req.) | 018C015KG |
| 18H | Shift Spring (Heavy) | 018H070 |
| 18L | Shift Spring (Light) | 018L015KG |
| 19 | Eccentric Cam | 019 070 |
| 21 | Eccentric Lever | 021 070 |
| 22 | Dog Spring Screw (2 req.) | 022 109 |
| 23 | Shift Housing Screw (2 req.) | 023 015KG |
| 24 | Handle Complete | 024B070VS |
| 27 | Left Side Plate-Assembly | 027 070 |