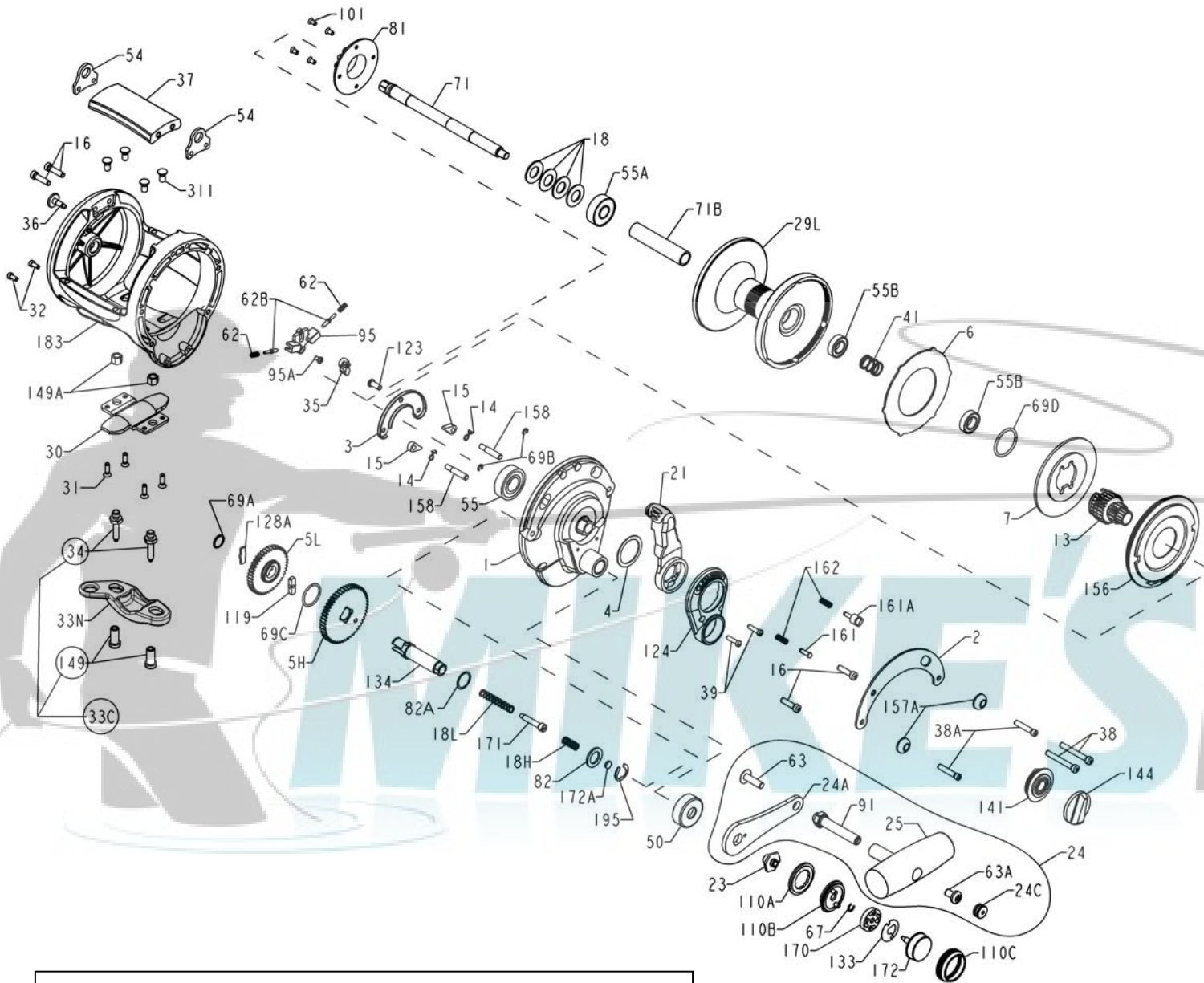




PARTS LIST FOR MODEL GLD50 II (24KG)



KEY NO.	DESCRIPTION	ORDERING NO.	ORIGINAL PENN NO.
16	Side Plate Screw (4 req.)	1181592	016T130
18	Disc Clutch Spring (4 req.)	1181613	018 050TW
18H	Shift Spring (Heavy)	1181634	018H030VS
18L	Shift Spring (Light)	1181637	018L030VS
21	Eccentric Lever	1181824	021 024KG
23	Handle Screw	1181933	023 030VS
24	Handle Assembly	1182098	024M024KG
24A	Handle Blank	1211561	024M016VS-1
24C	Handle Knob Cap	1191334	024C050M
25	Handle Knob	1206009	025M050
29L	Spool	1182482	029L024KG
30	Stand	1182622	030 114HL
31	Stand Screw (4 req.)	1182700	031T070
31I	Stand Insert (4 req.)	1182695	031 I 024KG
32	Screw (2 req.)	1182707	032 014CH
33C	Clamp Screw Kit	1182771	033C070
33N	Rod Clamp	1191619	033N070
34	Rod Clamp Screw (2 req.)	1182793	034 070
35	Click Tongue	1182896	035 024KG
36	Click Button	1182975	036 015KG
37	Spacer Bar Asm	1183130	037EGLD50Z
38	Screw (2 req.)	1183176	038T130S
38A	Screw (2 req.)	1183173	038T050
39	Bridge Cover Screw (2 req.)	1183187	039 015KG
41	Spindle Spring	1183324	041 040
50	Gear Stud Shield	1183777	050M015KG
54	Harness Lug (2 req.)	1183871	054M024KG
55	Ball Bearing	1183878	055 080
55A	Bearing	1183876	055 050
55B	Bearing (2 req.)	1183873	055 012H
62	Click Spring (2 req.)	1184029	062 545
62B	Click Pin (2 req.)	1184037	062B525
63	Handle Screw	1184046	063 050
63A	Handle Stud Screw	1184056	063A050
67	Retaining Ring	1184105	067 030VS
69A	Retaining Ring	1184954	195 024KG
69B	Retaining Ring (2 req.)	1184125	069B050
69C	Retaining Ring	1184133	069C245
69D	Retaining Ring	1184136	069D024KG
71	Spool Spindle	1184148	071 024KG
71B	Pinion Sleeve	1184163	071B024KG
81	Click Ratchet	1184203	081 040
82	Thrust Washer	1184222	082 040
82A	Shim	1184219	082 024KG
91	Handle Rivet	1184304	091N050
95	Click Housing	1184305	095 024KG
95A	Click Housing Screw	1184052	063 500S
101	Screw (4 req.)	1184403	101 030
110A	Lock Ring	1184440	110A030VS
110B	Plate	1184446	110B030VS
110C	Retaining Collar	1184447	110C030VS
119	Shift Plate	1184515	119 024KG
123	Bridge Screw	1184532	123 800
124	Bridge Cover	1184536	124 024KG
128A	Drive Plate	1184566	128A024KG
133	Retaining Plate	1184602	133 030VS
134	Gear Stud	1184610	134 024KG
141	Cam Follower	1184649	141 024KG
144	Preset Knob	1184699	144M024KG
149	Rod Clamp Nut (2 req.)	1184703	149 070
149A	Frame Nut (2 req.)	1184701	149 015KG
156	Drag Cover	1184732	156 024KG
157A	Spacer Bushing (2 req.)	1184763	157 024KG
158	Dog Pin (2 req.)	1184774	158 024KG
161	Free Spool Button	1184785	161 025
161A	Strike Button	1184787	161 040
162	Button Spring (2 req.)	1184795	162 050
170	Catch Assembly	1184809	170 030VS
171	Shift Plunger (Screw)	1184811	171 015KG
172	Shift Button	1184821	172 030VS
172A	Spacer	1184823	172A015KG
183	Frame	1184934	183M024KG
195	Retaining Ring	1184955	195 040

SPECIFICATIONS AND PRE-SETTING OF THE GLD50 II (24KG) DRAG

LINE CAPACITY	GEAR RATIO	LINE CLASS	STRIKE SETTING	FULL OR MAX. SETTING
600yds/50 lb	3.4-1 HIGH	50 lb	12-17 lbs	21-26 lbs
550M/0,55 mm	1.8-1 LOW	24 kg	5,5-8 kg	9,5-12 kg

KEY NO.	DESCRIPTION	ORDERING NO.	ORIGINAL PENN NO.
1	Right-Side Plate Asm.	1180574	001M024KG
2	Quadrant Ring	1180664	002M024KG
3	Dog Bridge	1180674	003 024KG
4	Thrust Washer	1211560	004 024KG
5H	Main Gear (High Speed)	1180812	005 024KGHS
5L	Main Gear (Low Speed)	1180813	005 024KGLS
6	Drag Washer	1180902	006 024KG
7	Metal Drag Washer	1181002	007 024KG
13	Pinion Gear	1181285	013 024KG
14	Dog Spring (2 req.)	1181387	014 015KG
15	Dog (2 req.)	1181419	015 015KG