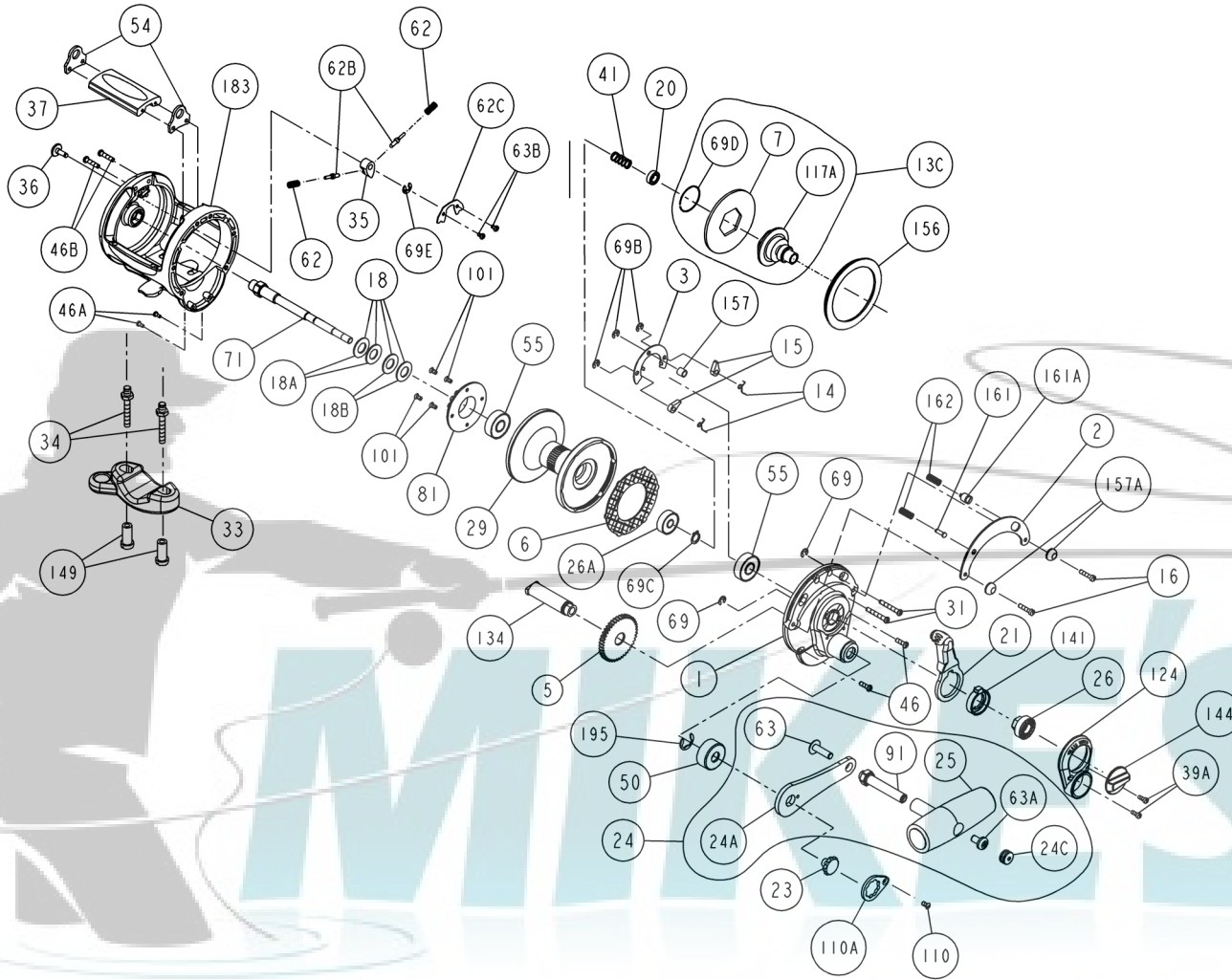




PARTS LIST FOR MODELS 10LD AND 15LD (GLD20 & GLD30)



<u>KEY NO.</u>	<u>DESCRIPTION</u>	<u>PART NO.</u>
21	Eccentric Lever	021 015KG
23	Handle Screw	023M114
24	Handle Assembly	024M015LD
24A	Handle Blank	024M015LD-1
24C	Handle Knob Cap	024C050
25	Handle Knob	025M050
26	Bushing	026 015KG
26A	Spool Ball Bearing	026 040
29	Spool (10LD only)	029L010LD
*	*Spool (15LD only)	*029L015LD
31	Long Screw (2 req.)	031T015KG
33	Rod Clamp (10LD only)	033 113
*	*Rod Clamp (15LD only)	*033 340
34	Rod Clamp Screw (2 req.)	034 010KG
35	Click Tongue	035 310N
36	Click Button	036 015KG
37	Top Spacer Bar (10LD only)	037EGLD20
*	*Top Spacer Bar (15LD only)	*037EGLD30
39A	Bridge Screw (2 req.)	039T015KG
41	Spindle Spring	041 015KG
46	Short Screw (2 req.)	046T750
46A	Frame Screw (2 req.)	032 002
46B	Long Frame Screw (2 req.)	046T9500
50	Gear Stud Shield	050M015KG
54	Harness Lug (2 req.)	054M015KG
55	Ball Bearing (2 req.)	055 050
62	Click S0pring	062 545
62B	Click Pin (2 req.)	062B525
62C	Click Spring Cover	062C015KG
63A	Handle Stud Screw	063A050
63B	Spring Cover Screw (2 req.)	063 500S
63	Screw	063 050
69	Retaining Ring (2 req.)	069B050
69B	Retaining Ring (3 req.)	069B600
69C	Spindle Retaining Ring	069C015KG
69D	Retaining Ring	069D015KG
69E	Retaining Ring	069B600
71	Spool Spindle (10LD only)	071 010KG
*	*Spool Spindle (15LD only)	*071 015KG
81	Click Ratchet	081 040
91	Handle Rivet	091N050
101	Ratchet Screw (4 req.)	101 030
110	Handle Lock Screw	110 050
110A	Handle Locking Screw	110M050
117A	Drive Plate Assembly	117A015KG
124	Bridge Cover	124 015KG
134	Gear Stud	134 010LD
141	Cam Follower	141 015KG
144	Preset Knob	144M015KG
149	Rod Clamp Nut (2 req.)	149 045
156	Drag Cover	156 015KG
157	Spacer Bushing	157 050
157A	Spacer Bushing	157 015KG
161	Free Spool Button	161 025
162	Button Spring (2 req.)	162 050
183	Frame Assembly (10LD only)	183M010KG
*	*Frame Assembly (15LD only)	*183M015KG
195	Retaining Ring	195 040

* = Not Shown

SPECIFICATIONS AND PRE-SETTING OF DRAG

	LINE CAPACITY	GEAR RATIO	LINE CLASS	STRIKE SETTING	FULL OR MAX. SETTING
15LD	600yds/30 lb 550M/0,55 mm	3.8-1	30 lb 15 kg	7-10 lbs 3-4,5 kg	15-18 lbs 7-8 kg
10LD	800yds/20 lb 730M/0,45 mm	3.8-1	20 lb 10 kg	4-7 lbs 1,8-3 kg	10-12 lbs 4,5-5,5 kg

<u>KEY NO.</u>	<u>DESCRIPTION</u>	<u>PART NO.</u>
1	Right-Side Plate Assembly	001M015KG
2	Quadrant Ring	002M015KG
3	Dog Bridge	003 015KG
5	Main Gear	005 010LD
6	Drag Washer	006 015KG
7	Metal Drag Washer	007 015KG
13C	Pinion Gear Assembly	013C015KG
14	Dog Spring (2 req.)	014 015KG
15	Dog (2 req.)	015 015KG
16	Side Plate Screw (2 req.)	016T060CH
18	Disc Clutch Spring (4 req.) (15LD only)	018 050TW
18A	Light Disc Clutch Spring (2 req.) (10LD only)	018 050W
18B	Heavy Disc Clutch Spring (2 req.) (10LD only)	018 050TW
20	Spindle Ball Bearing	020 4200