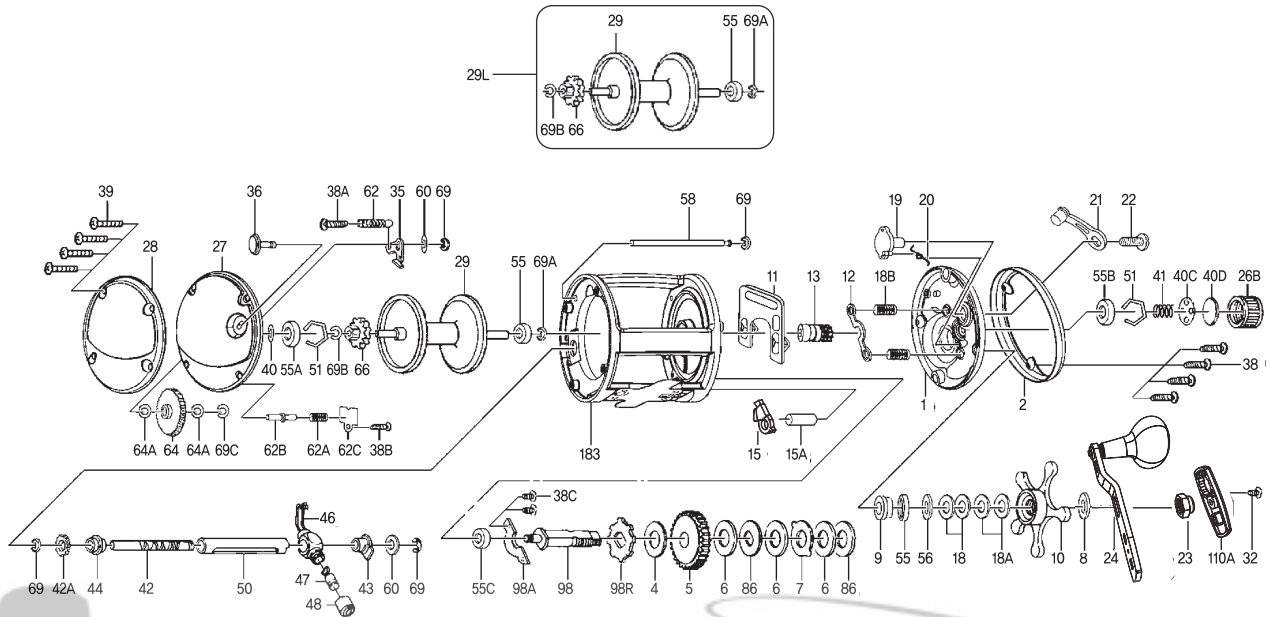




# DEFIANCE 25<sub>LW</sub>



KEY NO.	PART NO.	PENN STYLE NO.	DESCRIPTION	KEY NO.	PART NO.	PENN STYLE NO.	DESCRIPTION
1	1257567	001 DFN25LW	Plate, Right Side	41	1257713	041 DFN20LW	Spring, Coil
2	1257641	002 DFN25LW	Ring, Right Side	42	1257714	042 DFN20LW	Worm Shaft
4	1257644	004 DFN20LW	Washer, Fiber	42A	1257753	042ADFN25LW	Worm Gear
5	1257645	005 DFN20LW	Gear, Main	43	1257716	043 DFN20LW	Worm Bushing, R.S.
6	1257646	006 DFN20LW	Washer, Friction Drag (3)	44	1257717	044 DFN20LW	Worm Bushing, L.S.
7	1257647	007 DFN20LW	Washer, Eared Drag	46	1257718	046 DFN20LW	Line Guide
8	1257648	008 DFN20LW	Washer, Tension	47	1257719	047 DFN20LW	Pawl, Line Guide
9	1257649	009 DFN20LW	Bushing, Brass	48	1257720	048 DFN20LW	Screw, Line Guide
10	1257650	010 DFN20LW	Drag Star Assembly	50	1257721	050 DFN20LW	Worm Shield
11	1257651	011 DFN20LW	Eccentric Jack	51	1257722	051 DFN20LW	Retainer, Wire Hex (2)
12	1257652	012 DFN20LW	Pinion Yoke	55	1257723	055 DFN20LW	Ball Bearing (2)
13	1257653	013 DFN20LW	Pinion	55A	1257724	055ADFN20LW	Ball Bearing
15	1257654	015 DFN20LW	Dog	55B	1257725	055BDFN20LW	Bearing, Solid Brass
15A	1257655	015ADFN20LW	Dog Post	55C	1257726	055CDFN20LW	Ball Bearing
18	1257656	018 DFN20LW	Washer, Tension Spring (2)	56	1257727	056 DFN20LW	Shim
18A	1257657	018ADFN20LW	Washer, Tension Spring (2)	58	1257728	058 DFN20LW	Post, Line Guide
18B	1257658	018BDFN20LW	Spring, Coil (2)	60	1257729	060 DFN20LW	Washer, Flat (2)
19	1257751	019 DFN25LW	Eccentric Cam	62	1257730	062 DFN20LW	Spring, Click
20	1257660	020 DFN20LW	Eccentric Spring	62A	1257731	062ADFN20LW	Spring, Coil
21	1257752	021 DFN25LW	Eccentric Lever	62B	1257750	062BDFN25LW	Click Tension Shaft
22	1257662	022 DFN20LW	Eccentric Screw	62C	1257733	062CDFN20LW	Plate, Click Tension
23	1257663	023 DFN20LW	Nut, Handle	64	1257734	064 DFN20LW	Gear, Idler
24	1257664	024 DFN20LW	Handle Asm	64A	1257735	064ADFN20LW	Washer, Flat (2)
26B	1257665	026BDFN20LW	Cap, Spool Tension	66	1257736	066 DFN20LW	Click Ratchet
27	1257667	027 DFN25LW	Plate, Left Side	69	1257737	069 DFN20LW	Retainer, E Ring (4)
28	1257671	028 DFN25LW	Ring, Left Side	69A	1257738	069ADFN20LW	Retainer, C Ring
29	1257675	029 DFN25LW	Spool	69B	1257739	069BDFN20LW	Retainer, C Ring
29L	1257679	029LDFN25LW	Spool Assembly	69C	1257740	069CDFN20LW	Retainer, C Ring
32	1257682	032 DFN20LW	Screw, Machine	86	1257741	086 DFN20LW	Washer, Keyed Drag (2)
33C	1291631	033CDFN40LW	Rod Clamp Kit (Not Shown)	98	1257742	098 DFN20LW	Stud, Main Gear
35	1257683	035 DFN20LW	Click Tongue	98A	1257743	098ADFN20LW	Plate, Main Gear Stud
36	1257684	036 DFN20LW	Click Button	98R	1257744	098RDFN20LW	Ratchet, Anti Reverse
38	1257685	038 DFN20LW	Screw, Tapping (4)	110A	1257745	110ADFN20LW	Handle Nut Lock
38A	1257686	038ADFN20LW	Screw, Washer Hd	183	1257747	183 DFN25LW	Frame
38B	1257687	038BDFN20LW	Screw, Tapping				
38C	1257688	038CDFN20LW	Screw, Tapping (2)				
39	1257754	039 DFN25LW	Screw, Tapping (4)				
40	1257710	040 DFN20LW	Thrust Disc, Metal				
40C	1257711	040CDFN20LW	Thrust Disc, Metal				
40D	1257712	040DDFN20LW	Thrust Disc, Rubber				