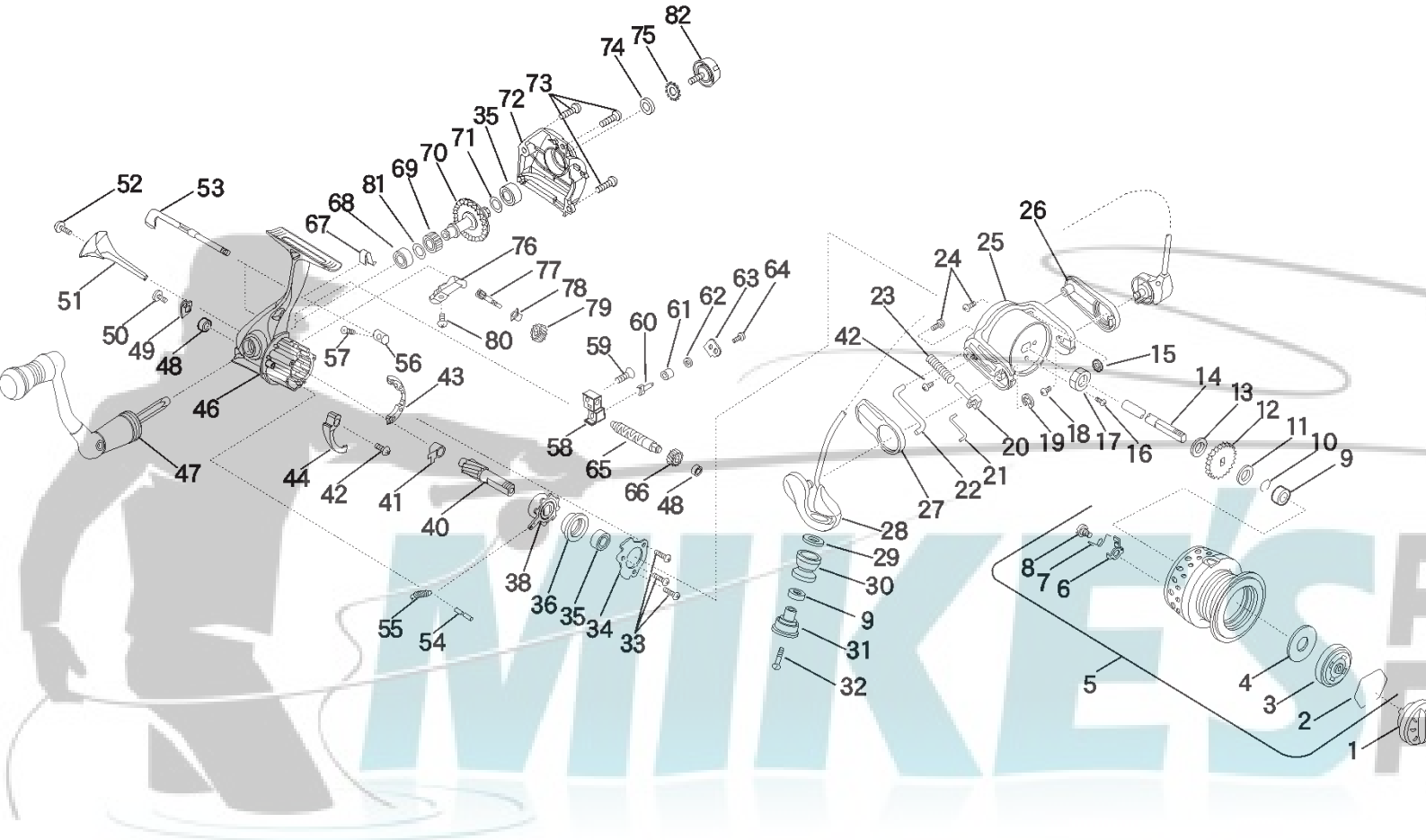




PARTS LIST FOR MODELS AF 1000 AND AF 2000



| KEY NO. | PART NO. | DESCRIPTION |
|---------|------------|---------------------------|
| 1 | 052 1000AF | Drag Knob Assembly |
| 2 | 051 1000AF | Drag Retaining Ring |
| 3 | 051A1000AF | Click Plate Assembly |
| 4 | 056 1000AF | Drag Washer (Friction) |
| 5 | 047 1000AF | Spool Assembly – Complete |
| | 047 2000AF | Spool Assembly – Complete |
| 6 | 048 1000AF | Click Tongue |
| 7 | 049 1000AF | Click Tongue Spring |
| 8 | 022 1000AF | Spool Click Screw |
| 9 | 047B1000AF | Ball Bearing (2 req.) |
| 10 | 047A1000AF | Bearing Retaining Ring |

| KEY NO. | PART NO. | DESCRIPTION |
|---------|------------|---|
| 11 | 060 1000AF | Thrust Washer (2 Assorted Washers Included) |
| 12 | 040B1000AF | Click Ratchet |
| 13 | 060A1000AF | Spool Washer |
| 14 | 039 1000AF | Spool Shaft |
| 15 | 031B1000AF | Bail Cam Washer |
| 16 | 038A1000AF | Rotor Nut Screw |
| 17 | 038 1000AF | Rotor Nut |
| 18 | 031A1000AF | Bail Cam Screw |
| 19 | 031 1000AF | Bail Arm Retaining Ring |
| 20 | 034B1000AF | Pivot Guide |

| KEY NO. | PART NO. | DESCRIPTION |
|---------|------------|----------------------------------|
| 21 | 034C1000AF | Trip Lever Link |
| 22 | 028 1000AF | Trip Lever |
| 23 | 032 3000AF | Bail Trip Spring |
| 24 | 050 1000AF | Bail Spring Cover Screw (2 req.) |
| 25 | 027 1000AF | Rotor |
| 26 | 227 1000AF | Bail Cam Cover |
| 27 | 027A1000AF | Bail Trip Cover |
| 28 | 024 1000AF | Bail Arm Assembly |
| 29 | 132 1000AF | Roller Washer |
| 30 | 035 1000AF | Line Roller |
| 31 | 026 1000AF | Line Roller Stud |
| 32 | 036 1000AF | Roller Mounting Screw |
| 33 | 046 1000AF | Clutch Retainer Screw (3 req.) |
| 34 | 098 1000AF | Clutch Retainer |
| 35 | 020 1000AF | Ball Bearing (2 req.) |
| 36 | 020A1000AF | Ball Bearing Collar |
| 38 | 098B1000AF | Clutch Bearing and Sleeve |
| 40 | 019 1000AF | Pinion |
| 41 | 019A1000AF | Pinion Guide Bushing |
| 42 | 028E1000AF | Trip Cam Screw (2 req.) |
| 43 | 028D1000AF | Friction Ring |
| 44 | 028C1000AF | Trip Cam |
| 46 | 001 1000AF | Housing Assembly |
| 47 | 015 1000AF | Handle Assembly |
| 48 | 043H1000AF | Ball Bearing (2 req.) |
| 49 | 043J1000AF | Bearing Retainer |
| 50 | 043K1000AF | Bearing Retainer Screw |
| 51 | 226 1000AF | Rear Cap |
| 52 | 226A1000AF | Rear Cap Screw |
| 53 | 006E1000AF | Anti-Reverse Shaft |
| 54 | 098C1000AF | Spring Anchor Pin |
| 55 | 098D1000AF | One-Way Clutch Spring |
| 56 | 006G1000AF | Anti-Reverse Cam |
| 57 | 006F1000AF | Anti-Reverse Cam Screw |
| 58 | 043 1000AF | Crosswind Block |
| 59 | 043A1000AF | Crosswind Block Screw |
| 60 | 043B1000AF | Crosswind Pawl |
| 61 | 043C1000AF | Pawl Collar |
| 62 | 043D1000AF | Pawl Washer |
| 63 | 043E1000AF | Crosswind Block Plate |
| 64 | 043F1000AF | Plate Screw |
| 65 | 043G1000AF | Worm Shaft |
| 66 | 231 1000AF | Worm Shaft Gear |
| 67 | 006D1000AF | Anti-Reverse Shaft Spring |
| 68 | 020 2000AF | Ball Bearing |
| 69 | 008B1000AF | Drive Gear |
| 70 | 008 1000AF | Main Gear |
| 71 | 008A1000AF | Thrust Washer |
| 72 | 045 1000AF | Housing Cover |
| 73 | 044 1000AF | Cover Screw (3 req.) |
| 74 | 233B1000AF | Handle Thrust Washer |
| 75 | 233A1000AF | Handle Lock Washer |
| 76 | 081A1000AF | Idler Gear Shaft Support |
| 77 | 081B1000AF | Idler Gear Shaft |
| 78 | 081C1000AF | Idler Gear Shaft Bushing |
| 79 | 081 1000AF | Idler Gear |
| 80 | 081D1000AF | Support Mounting Screw |
| 81 | 008C1000AF | Thrust Washer |
| 82 | 233 1000AF | Bearing Cover Assembly |