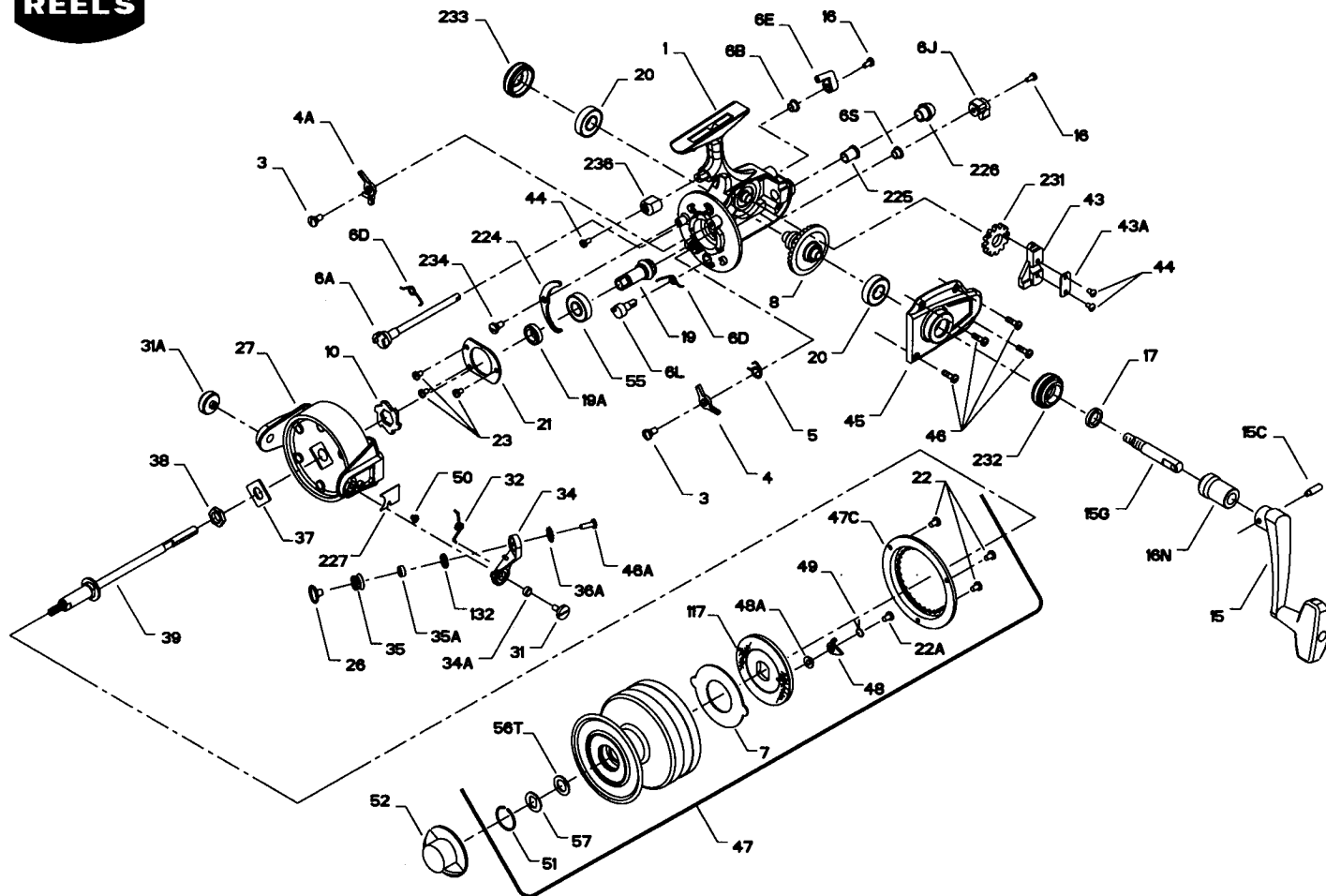




## PARTS LIST FOR MODEL 9500-MB



### KEY

NO.	DESCRIPTION	PART NO.
1	Housing	1-9500
3	Dog Screw (2 req.)	3-750
4	Dog	4-750
4A	Silent Dog	4A-750
5	Click Dog Spring	5-704
6A	Upper Eccentric	6A-750
6B	Upper Eccentric Liner	6B-750
6D	Eccentric Spring	6D-710
6E	Anti-Reverse Lever	6E-750
6J	Silent Dog Lever	6J-750
6L	Silent Eccentric	6L-750
6S	Silent Eccentric Liner	6B-700Z
7	Metal Drag Washer	7-4FR
8	Main Gear	8-9500
10	Ratchet	10-9500
15	Handle	15-750
15C	Handle Pivot Screw	15C-750
15G	Handle Pivot	15G-9500
16	Eccentric Screw (2 req.)	16-910
16N	Collar	16-9500
17	Seal Washer	17-750
19	Pinion	19-9500
19A	Pinion Spacer	19A-9500
20	Ball Bearing (2 req.)	20-704
21	Bearing Cover	21-9500
22	Spool Click Screw	22-9500
22A	Drag Cover Screw (3 req.)	22A-9500
23	Bearing Cover Screw (3 req.)	23-750
24	Bail Wire	24-9500
27	Rotor	27-9500
31	Bail Arm Screw	31-750
32	Bail Arm Spring	32-750
34	Bail Arm	34-9500
34A	Bail Arm Bushing	34A-750

### KEY

NO.	DESCRIPTION	PART NO.
35	Line Roller	35-9500
35A	Line Roller Bearing	35A-706
36A	Lock Washer	36A-750
37	Rotor Washer	37-9500
38	Rotor Nut	38-9500
39	Spool Shaft	39-9500
43	Spool Block	43-9500
43A	Crosswind Block Plate	43A-750
44	Crosswind Block Screw (3 req.)	44-750
45	Housing Cover	45-9500
46	Housing Cover Screw (4 req.)	46-9500
46A	Bail Stud Screw	46A-9500
47	Spool (Complete)	47-9500
47C	Drag Cover	47C-9500
48	Click Tongue	48-9500
48A	Click Tongue Washer	48A-9500
49	Click Tongue Spring	49-9500
50	Bail Spring Cover Screw	50-712
51	Retaining Ring	51-704
52	Drag Knob	52-650
55	Ball Bearing	55-50
56T	Drag Washer (Teflon®)	56T-704
57	Drag Washer Keyed	57-704
69	Manual Bail Kit (Optional)	69-9500
117	Drag Washer/Drive Plate	117-9500
132	Roller Washer	132-706
224	Transfer Lever	224-750
225	Crosswind Shaft Bushing	225-9500
226	Bushing Cap Screw	226-9500
227	Bail Spring Cover	227-9500
231	Crosswind Gear	231-9500
232	Bearing Cover (Open)	232-750
233	Bearing Cover (Closed)	233-750
234	Transfer Lever Screw	234-750
236	Trip Bumper	236-750