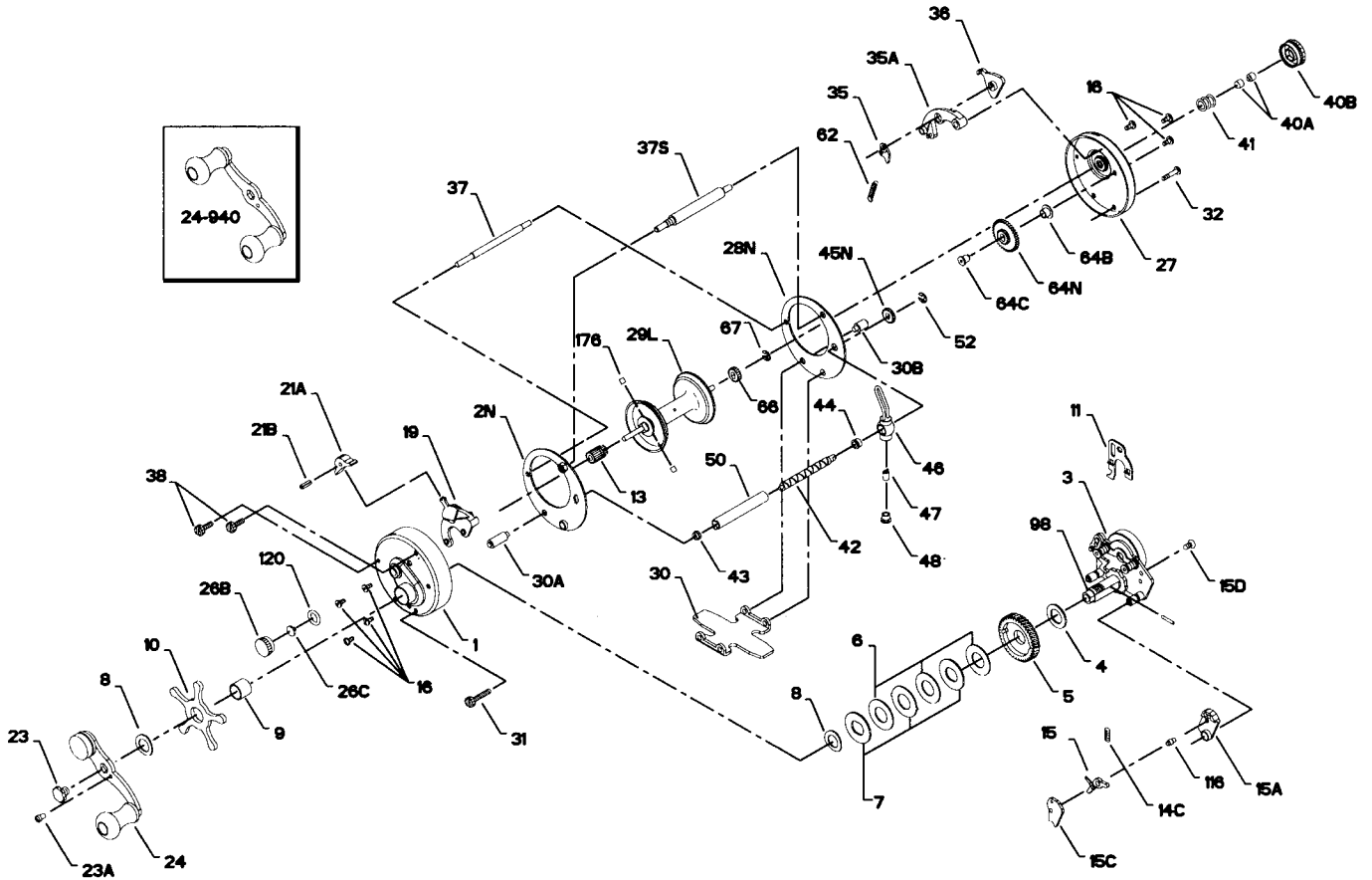




PARTS LIST FOR LEVELMATIC 920, 930 AND 940



KEY NO.	DESCRIPTION	PART NO.	KEY NO.	DESCRIPTION	PART NO.
1	Right Side Plate	1-910	32	L.S. Stand Screw	32-910
2N	Right Side Ring	2N-910	35	Click Tongue	35-910
3	Bridge Assembly	3-910	35A	Click Support Block	35A-910
4	Fibre Washer	4-910	36	Click Lever Cut Ecc.	36-910
5	Main Gear	5-910	37	Frame Post (920)	37-910
6	Drag Washer	6-910	37S	Frame Post (930-940)	37-930
7	Metal Disc Set	7-910	37S	Slotted Line Guide (920)	58N-910
8	Tension Spring	8-910	37S	Slotted Line Guide (930-940)	58N-910
9	Spacing Sleeve	9-910	38	Post Screw	38-910
10	Star Drag Wheel	10-910	40A	Bearing Plunger	40A-910
11	Eccentric Jack	11-910	40B	L.S. Bearing Cup	40B-910
13	Pinion Gear	13-910	41	L.S. Bearing Spring	41-910
14C	Dog Spring	14-910	42	Worm (920)	42-910
15	Dog	15-910	42	Worm (930-940)	42-930
15A	Dog Housing	15A-910	43	R.S. Worm Bearing	43-910
15C	Dog Cover	15C-910	44	L.S. Worm Bearing	44-910
15D	Dog Cover Screw	15D-910	45A	Worm Drive Shaft	45A-910
16	Bridge Screw	16-910	45N	Worm Gear	45N-910
19	Eccentric	19-910	46	Line Guide	46-910
21A	Lever Knob	21A-910	47	Pawl	47-910
21B	Lever Knob Pin	21B-910	48	Pawl Cover Screw	48-910
23	Handle Screw	23-910	50	Worm Shield (920)	50-910
23A	Handle Lock Screw	110-60	50	Worm Shield (930-940)	50-930
24	Handle (920-930)	24-920	52	Retaining Ring	52-910
	Handle (940)	24-940	55	L.S. Bearing	26-910
26	R.S. Ball Bearing	26-910	*58A	R.S. Post Nut	58A-910
	R.S. Bearing Cap	26B-910	62	Click Spring	62-910
	R.S. Spool Positioner	26C-910	64B	Idler Gear Bushing	64B-910
	R.S. Bearing Retainer	26D-910	64C	Idler Gear Shaft	64C-910
27	Left Side Plate	27-920	64N	Idler Gear (New)	64N-910
	Left Side Plate	27-930	65	Shaft Screw	65-910
	Left Side Ring	27-940	66	Drive Gear	66N-910
28	Left Side Ring	28N-910	67	Drive Gear Lock Spring	67-9
29L	Spool (920)	29-910	98	Gear Sleeve	98-310
	Spool (930-940)	29-930	116	Dog Post	116-910
30	Stand (920)	30N-910	120	"O" Ring	120-910
	Stand (930-940)	30N-930	159	Spring	159-910
30A	R.S. Stand Screw	30A-910	*173	L.S. Brg. Retainer	173-910
30B	L.S. Stand Screw	30B-980	*175	Light Brakes (2 req.) (Optional)	175-910
31	Stand Screw	31N-910	176	Medium Brakes (2 req.)	179-910
			*177	Heavy Brakes (2 req.) (Optional)	177-910

*Not Shown