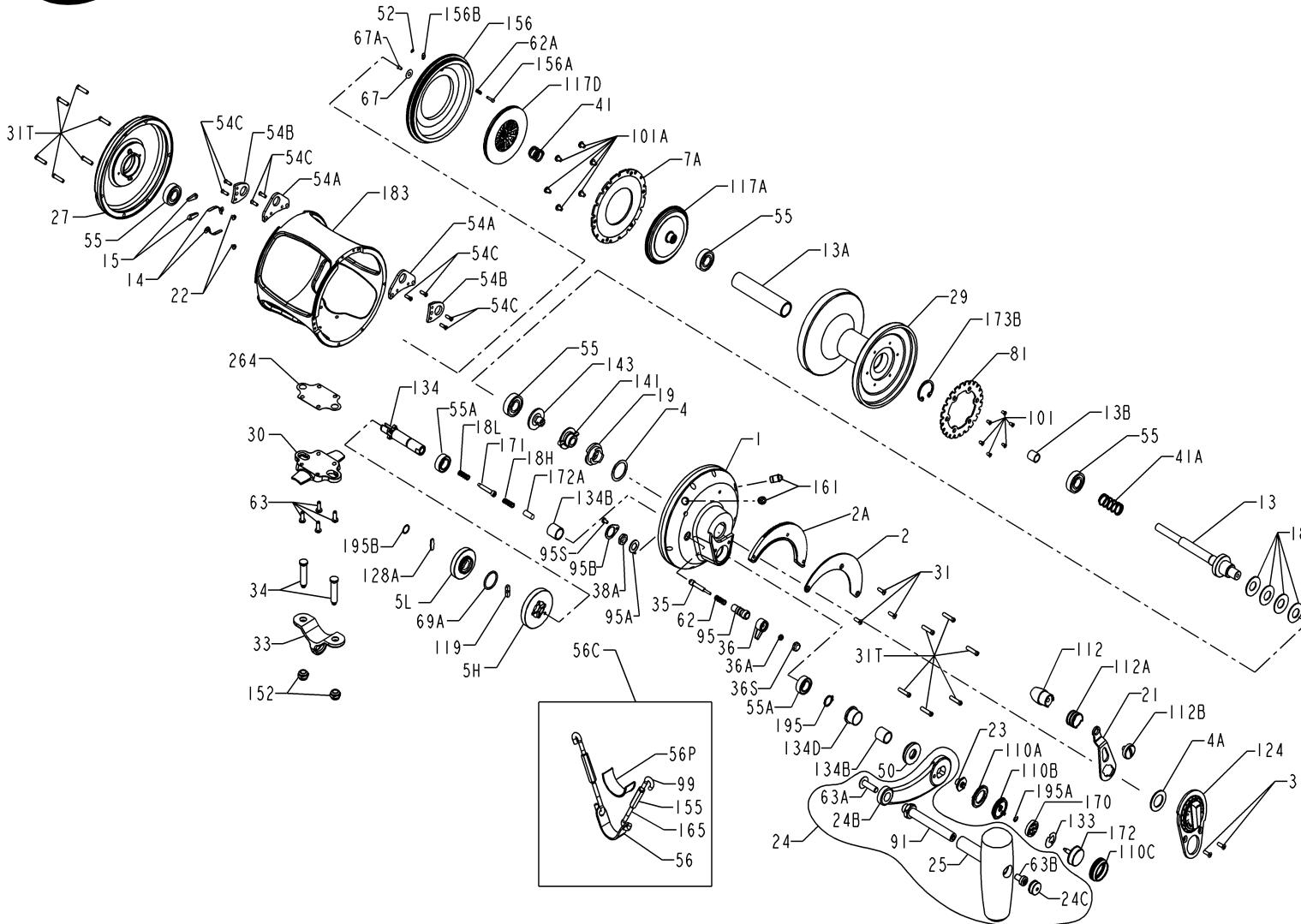




# PARTS LIST FOR MODEL 80VSW



| KEY NO. | DESCRIPTION                    | PART NO.   |
|---------|--------------------------------|------------|
| 41      | Bearing Spring                 | 041 050    |
| 41A     | Drag Spring                    | 041 080VS  |
| 50      | Shield                         | 050 080VS  |
| 52      | Retaining Ring                 | 052 910    |
| 54A     | Harness Lug (2 req.)           | 054A080S   |
| 54B     | Rod Brace Lug (2 req.)         | 054B080S   |
| 54C     | Harness Lug Screw (8 req.)     | 054B080VS  |
| 55      | Ball Bearing (4 req.)          | 055 080    |
| 55A     | Ball Bearing (2 req.)          | 055 080ST  |
| 56      | Rod Brace                      | 056 116    |
| 56C     | Rod Brace Assembly             | 056C115    |
| 56P     | Rod Brace Pad                  | 056P117    |
| 62      | Click Spring                   | 062 050    |
| 62A     | Click Spring                   | 062 545    |
| 63      | Stand Screw (4 req.)           | 063 030T   |
| 63A     | Handle Shaft Screw             | 063A050    |
| 63B     | Handle Knob Screw              | 063 080VS  |
| 67      | Pinion Gear Washer             | 067 070    |
| 67A     | Retaining Screw                | 067A070    |
| 69A     | Retaining Ring                 | 069C245    |
| 81      | Ratchet                        | 081 080S   |
| 91      | Handle Knob Shaft              | 091 080VS  |
| 95      | Click Tongue Bushing           | 095 070    |
| 95A     | Click Bushing Washer           | 095A050    |
| 95B     | Retaining Plate                | 095B070    |
| 95S     | Retaining Plate Screw          | 023 750    |
| 99      | Hook Screw, L.H. (2 req.)      | 099 115    |
| 101     | Ratchet Screw (6 req.)         | 101 030    |
| 101A    | Drag Washer Screw (6 req.)     | 101 130S   |
| 110A    | Locating Ring                  | 110A030VS  |
| 110B    | Shift Base                     | 110B030VS  |
| 110C    | Shift Button Retainer          | 110C030VS  |
| 112     | Lever Knob Assembly            | 112 030VS  |
| 112A    | Lever Knob Sleeve              | 112A030VS  |
| 112B    | Lever Knob Screw               | 112B070    |
| 117A    | Inner Drive Plate              | 117AN080T  |
| 117D    | Outer Drive Plate              | 117DN080T  |
| 119     | Shift Plate                    | 119 024KG  |
| 124     | Bridge Cover Assembly          | 124L080VS  |
| 128A    | Drive Plate                    | 128A024KG  |
| 133     | Retaining Plate                | 133 030VS  |
| 134     | Gear Stud                      | 134 080VS  |
| 134B    | Sleeve (2 req.)                | 134B080VS  |
| 134D    | Gear Stud Collar               | 134D080VS  |
| 141     | Cam Follower                   | 141 070    |
| 143     | Preset Screw                   | 143 070    |
| 152     | Rod Clamp Nut (2 req.)         | 152A080T   |
| 155     | Turnbuckles (2 req.)           | 155 115    |
| 156     | Drag Cover                     | 156 080VS  |
| 156A    | Lock Pin                       | 156A030VS  |
| 156B    | Lock Plate                     | 156B030VS  |
| 161     | Locating Pin Assembly (2 req.) | 161C030VSW |
| 165     | Hook Screw, R.H. (2 req.)      | 165 115    |
| 170     | Catch Assembly                 | 170 030VS  |
| 171     | Shift Plunger                  | 171 015KG  |
| 172     | Shift Button                   | 172 030VS  |
| 172A    | Spacer                         | 172A080VS  |
| 173B    | Retaining Ring                 | 173 080VS  |
| 183     | Tube Frame                     | 183 080VSW |
| 195     | Retaining Ring                 | 195 600    |
| 195A    | Retaining Ring                 | 067 030VS  |
| 195B    | Spiral Retaining Ring          | 195 024KG  |
| 264     | Stand Gasket                   | 264 080T   |

| KEY NO. | DESCRIPTION            | PART NO.    |
|---------|------------------------|-------------|
| 1       | Right Side Plate       | 001 080VS   |
| 2       | Quadrant Ring          | 002 080VS   |
| 2A      | Quadrant Spacer        | 002A080VS   |
| 4       | Cam Thrust Washer      | 004 070     |
| 4A      | Cam Teflon Washer      | 004A070     |
| 5H      | Main Gear (High Speed) | 005 080VSHS |
| 5L      | Main Gear (Low Speed)  | 005 080VSL  |
| 7A      | Metal Drag Washer      | 007A080VS   |
| 13      | Pinion Gear            | 013 080VSW  |
| 13A     | Spool Sleeve           | 013B080VSW  |
| 13B     | Pinion Gear Sleeve     | 013B070     |
| 14      | Dog Spring (2 req.)    | 014 050     |

| KEY NO. | DESCRIPTION                 | PART NO.    |
|---------|-----------------------------|-------------|
| 15      | Dog (2 req.)                | 015 050     |
| 18      | Disc Clutch Spring (4 req.) | 018 080W    |
| 18H     | Shift Spring (Heavy)        | 018H030VS   |
| 18L     | Shift Spring (Light)        | 018L030VS   |
| 19      | Eccentric Cam               | 019 070     |
| 21      | Eccentric Lever             | 021 080VS   |
| 22      | Dog Spring Screw (2 req.)   | 022 109     |
| 23      | Handle Screw (2 req.)       | 023 030VS   |
| 24      | Handle Complete             | 024 080VS   |
| 24B     | Handle Blank                | 024 080VS-1 |
| 24C     | Handle Knob Cap             | 024C080ST   |
| 25      | Handle Knob Assembly        | 025 080ST   |

| KEY NO. | DESCRIPTION                | PART NO.   |
|---------|----------------------------|------------|
| 27      | Left Side Plate-Assembly   | 027 080VS  |
| 29      | Spool                      | 029L080VSW |
| 30      | Stand                      | 030 080VS  |
| 31      | Short Screw (5 req.)       | 031T070    |
| 31T     | Side Plate Screw (12 req.) | 031 080VS  |
| 33      | Rod Clamp                  | 033 130ST  |
| 34      | Clamp Screw (2 req.)       | 034 080VS  |
| 35      | Click Tongue               | 035 130SN  |
| 36      | Click Button               | 036N050    |
| 36A     | Click Button Nut           | 036 700    |
| 36S     | Click Button Cap           | 036S080ST  |
| 38A     | Click Bushing Nut          | 038 710    |