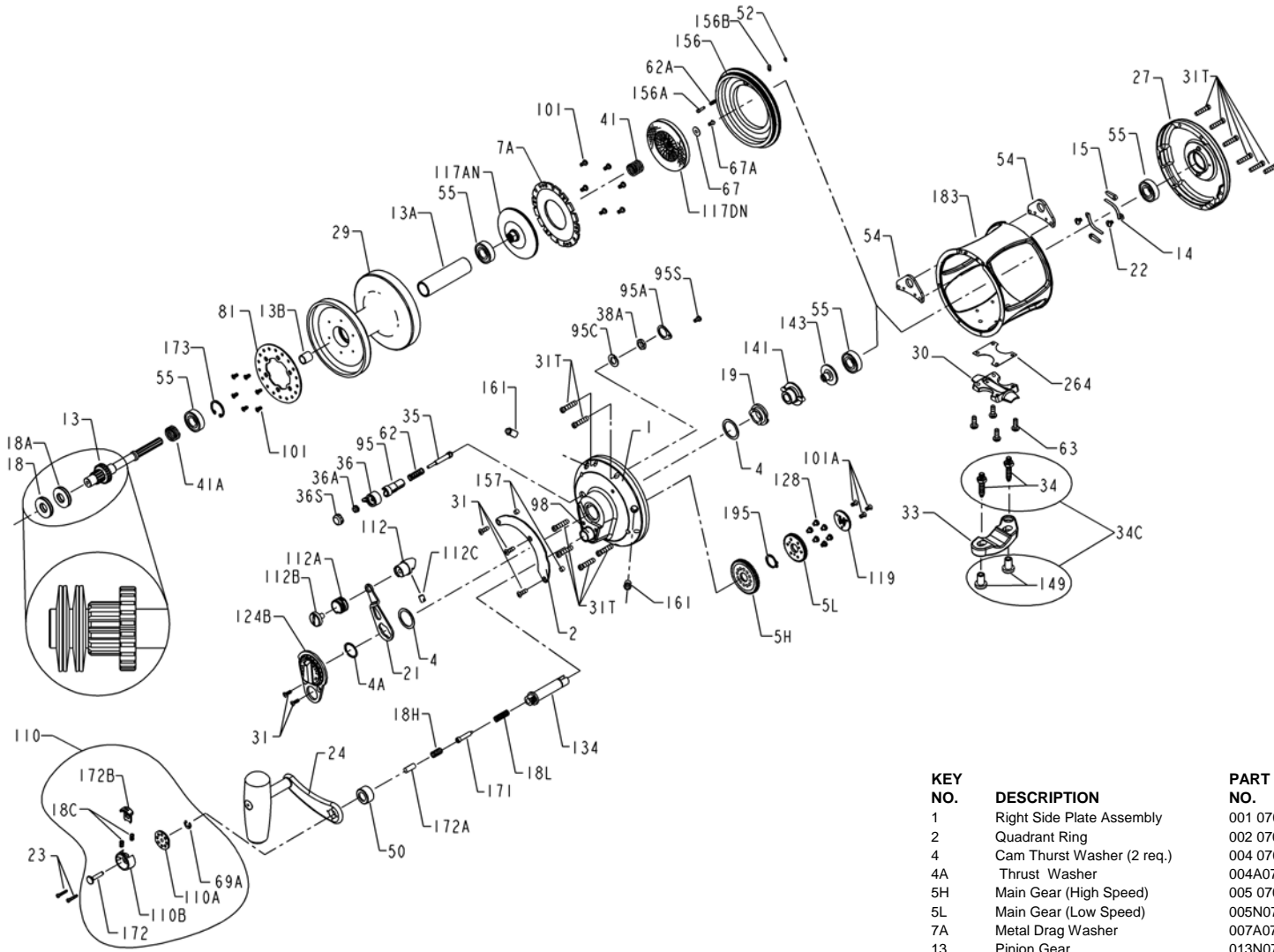


PENN PARTS LIST FOR MODEL 70VSL



KEY NO.	DESCRIPTION	PART NO.	DESCRIPTION	PART NO.
24	Handle Complete	024 070VS	Handle Complete	024 070VS
27	Left Side Plate-Assembly	027 070	Left Side Plate-Assembly	027 070
29	Spool	029L070	Spool	029L070
30	Stand	030 050T	Stand	030 050T
31	Short Screw (5 req.)	031T070	Short Screw (5 req.)	031T070
31T	Side Plate Screw (12 req.)	031T080	Side Plate Screw (12 req.)	031T080
33	Rod Clamp	033 070	Rod Clamp	033 070
34	Clamp Screw (2 req.)	034 070	Clamp Screw (2 req.)	034 070
34C	Rod Clamp Screw w/Nut	034C070	Rod Clamp Screw w/Nut	034C070
35	Click Tongue	035 070	Click Tongue	035 070
36	Click Button	036N050	Click Button	036N050
36A	Click Button Nut	036 700	Click Button Nut	036 700
36S	Click Button Cap	036S080ST	Click Button Cap	036S080ST
38A	Click Bushing Nut	038 710	Click Bushing Nut	038 710
41	Bearing Spring	041 050	Bearing Spring	041 050
41A	Drag Spring	041 070	Drag Spring	041 070
50	Shield	050 080ST	Shield	050 080ST
52	Retaining Ring	052 910	Retaining Ring	052 910
54	Harness Lug (2 req.)	054A080S	Harness Lug (2 req.)	054A080S
55	Ball Bearing (4 req.)	055 080	Ball Bearing (4 req.)	055 080
62	Click Spring	062 050	Click Spring	062 050
62A	Click Spring	062 545	Click Spring	062 545
63	Stand Screw (4 req.)	063 030T	Stand Screw (4 req.)	063 030T
67	Pinion Gear Washer	067 070	Pinion Gear Washer	067 070
67A	Retaining Screw	067A070	Retaining Screw	067A070
69A	Retaining Ring	069B030S	Retaining Ring	069B030S
81	Ratchet	081 070	Ratchet	081 070
95	Click Tongue Bushing	095 070	Click Tongue Bushing	095 070
95A	Retaining Plate	095B070	Retaining Plate	095B070
95C	Click Bushing Washer	095A050	Click Bushing Washer	095A050
95S	Retaining Plate Screw	046A704	Retaining Plate Screw	046A704
98	Bridge Bushing	098 070	Bridge Bushing	098 070
101	Ratchet Screw (12 req.)	101 030	Ratchet Screw (12 req.)	101 030
101A	Coupling Plate Screws (3 req.)	101 050S	Coupling Plate Screws (3 req.)	101 050S
110	Shifter Assembly	110 015KG	Shifter Assembly	110 015KG
110A	Handle Locking Plate	110A015KG	Handle Locking Plate	110A015KG
110B	Shift Housing	110B015KG	Shift Housing	110B015KG
112	Eccentric Lever Knob	112 070	Eccentric Lever Knob	112 070
112A	Knob Sleeve	112A070	Knob Sleeve	112A070
112B	Eccentric Knob Screw	112B070	Eccentric Knob Screw	112B070
117AN	Retaining Plate w/Drag Washer	117AN070	Retaining Plate w/Drag Washer	117AN070
117DN	Drive Plate w/Drag Washer	117DN070	Drive Plate w/Drag Washer	117DN070
119	Coupling Plate	119 015KG	Coupling Plate	119 015KG
124B	Bridge Cover Assembly	124L070	Bridge Cover Assembly	124L070
128	Low Gear Pins (6 req.)	128 070	Low Gear Pins (6 req.)	128 070
134	Gear Stud	134 070	Gear Stud	134 070
141	Cam Follower	141 070	Cam Follower	141 070
143	Preset Screw	143 070	Preset Screw	143 070
149	Rod Clamp Nut (2 req.)	149 070	Rod Clamp Nut (2 req.)	149 070
156	Drag Cover	156 070	Drag Cover	156 070
156A	Lock Pin	156A030VS	Lock Pin	156A030VS
156B	Lock Plate	156B030VS	Lock Plate	156B030VS
157	Quadrant Spacing Bushing (2	157S012LT	Quadrant Spacing Bushing (2	157S012LT
161	Locating Pin Assembly (2 req.)	161C070	Locating Pin Assembly (2 req.)	161C070
171	Shift Plunger	171 015KG	Shift Plunger	171 015KG
172	Shift Button (Low)	172 015KG	Shift Button (Low)	172 015KG
172A	Spring Spacer	172A070	Spring Spacer	172A070
172B	Shift Button (High)	172B015KG	Shift Button (High)	172B015KG
173	Retaining Ring	173 080VS	Retaining Ring	173 080VS
183	Tube Frame	183 070	Tube Frame	183 070
195	Retaining Ring	195 600	Retaining Ring	195 600
264	Stand Gasket	264 30T	Stand Gasket	264 30T