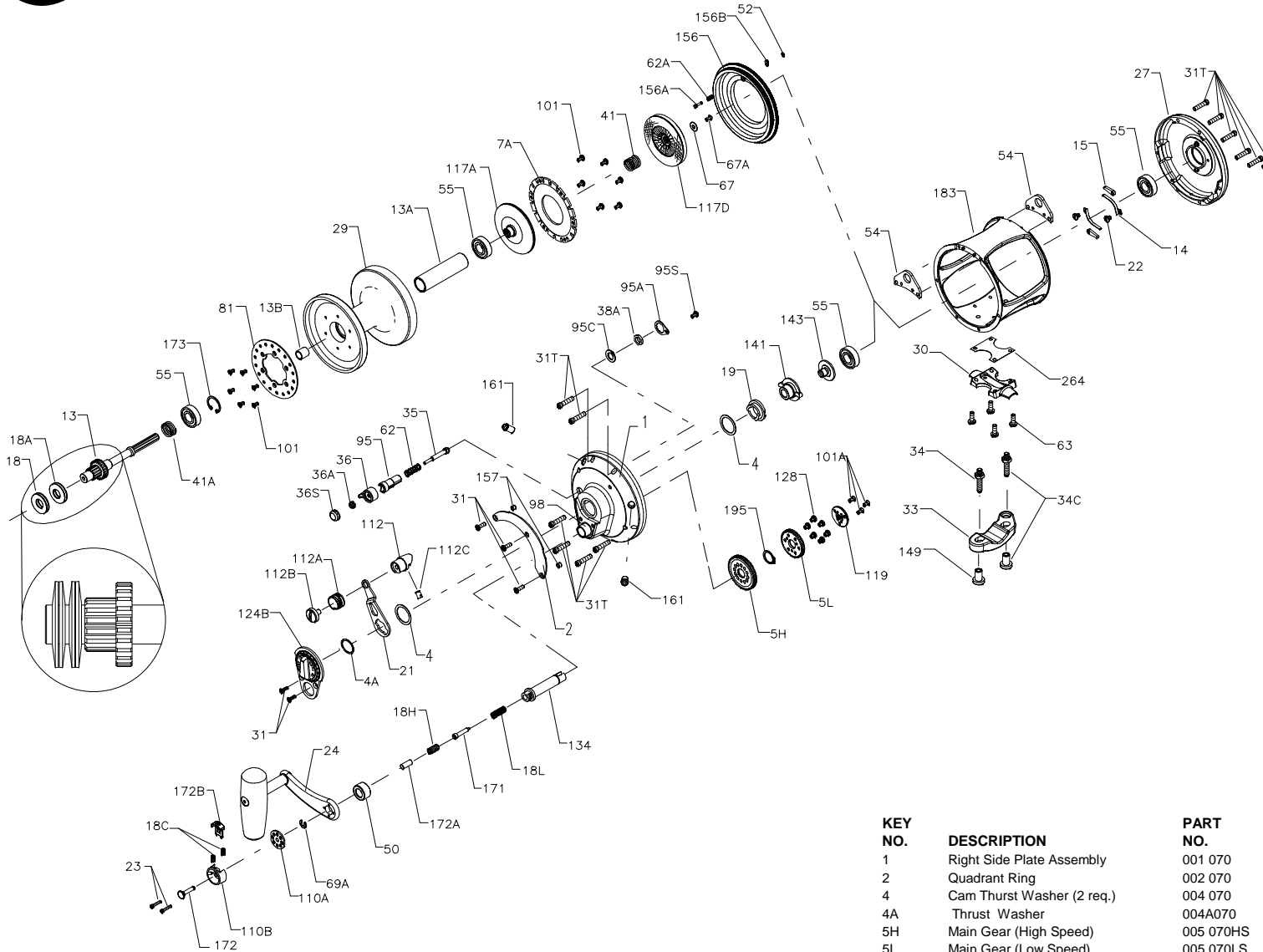




# PARTS LIST FOR MODEL 70VS



SPECIFICATIONS AND PRE-SETTING OF DRAG				
LINE CAPACITY	GEAR RATIO	LINE CLASS	STRIKE SETTING	FULL OR MAX SETTING
600yds/80 lb.	3.1-1 HIGH	80 lb	12-28 lbs	35-40 lbs
1000yds/50 lb.	1.4-1 LOW	50 lb	12-17 lbs	21-26 lbs
550M/ 0,90mm	3.1-1 HIGH	37 kg	9-12,5 kg	16-18 kg
900M/ 0,70mm	1.4-1 LOW	24 kg	5,5-8 kg	9,5-12 kg

KEY NO.	DESCRIPTION	PART NO.	PART NO.
22	Dog Spring (2 req.)	022 109	
23	Shift Housing Screw (2 req.)	023 015KG	
24	Handle Complete	024B070VS	
27	Left Side Plate-Assembly	027 070	
29	Spool	029L070	
30	Stand	030 050T	
31	Short Screw (5 req.)	031T070	
31T	Side Plate Screw (12 req.)	031T080	
33	Rod Clamp	033 070	
34	Clamp Screw (2 req.)	034 070	
34C	Rod Clamp Screw w/Nut	034C070	
35	Click Tongue	035 070	
36	Click Button	036N050	
36A	Click Button Nut	036 700	
36S	Click Button Cap	036S080ST	
38A	Click Bushing Nut	038 710	
41	Bearing Spring	041 050	
41A	Drag Spring	041 070	
50	Shield	050 080ST	
52	Retaining Ring	052 910	
54	Harness Lug (2 req.)	054A080S	
55	Ball Bearing (4 req.)	055 080	
62	Click Spring	062 050	
62A	Click Spring	062 545	
63	Stand Screw (4 req.)	063 030T	
67	Pinion Gear Washer	067 070	
67A	Retaining Screw	067A070	
69A	Retaining Ring	069B030S	
81	Ratchet	081 070	
95	Click Tongue Bushing	095 070	
95A	Retaining Plate	095B070	
95C	Click Bushing Washer	095A050	
95S	Retaining Plate Screw	046A704	
98	Bridge Bushing	098 070	
101	Ratchet Screw (12 req.)	101 030	
101A	Coupling Plate Screws (3 req.)	101 050S	
110A	Handle Locking Plate	110A015KG	
110B	Shift Housing	110B015KG	
112	Eccentric Lever Knob	112 070	
112A	Knob Sleeve	112A070	
112B	Eccentric Knob Screw	112B070	
112C	Plug	112C070	
117A	Retaining Plate w/ Drag Washer	117A070	
117D	Drive Plate w/ Drag Washer	117D070	
119	Coupling Plate	119 015KG	
124B	Bridge Cover Assembly	124L070	
128	Low Gear Pins (6 req.)	128 080ST	
134	Gear Stud	134 070	
141	Cam Follower	141 070	
143	Preset Screw	143 070	
149	Rod Clamp Nut (2 req.)	149 070	
156	Drag Cover	156 070	
156A	Lock Pin	156A030VS	
156B	Lock Plate	156B030VS	
157	Quadrant Spacing Bushing (2 req.)	157S012LT	
161	Locating Pin Assembly (2 req.)	161C070	
171	Shift Plunger	171 015KG	
172	Shift Button (Low)	172 015KG	
172A	Spring Spacer	172A070	
172B	Shift Button (High)	172B015KG	
173	Retaining Ring	173 080VS	
183	Tube Frame	183 070	
195	Retaining Ring	195 600	
264	Stand Gasket	264 30T	

KEY NO.	DESCRIPTION	PART NO.
1	Right Side Plate Assembly	001 070
2	Quadrant Ring	002 070
4	Cam Thrust Washer (2 req.)	004 070
4A	Thrust Washer	004A070
5H	Main Gear (High Speed)	005 070HS
5L	Main Gear (Low Speed)	005 070LS
7A	Metal Drag Washer	007A070
13	Pinion Gear	013 070
13A	Spool Sleeve	013B070VS
13B	Pinion Gear Sleeve	013B070
14	Dog Spring (2 req.)	014 050
15	Dog	015 050
18	Disc Clutch Spring (2 req.)	018 080
18A	Disc Clutch Spring (2 req.)	018 080W
18C	Shift Button Spring (2 req.)	018C015KG
18H	Shift Spring (Heavy)	018H070
18L	Shift Spring (Light)	018L015KG
19	Eccentric Cam	019 070
21	Eccentric Lever	021 070

