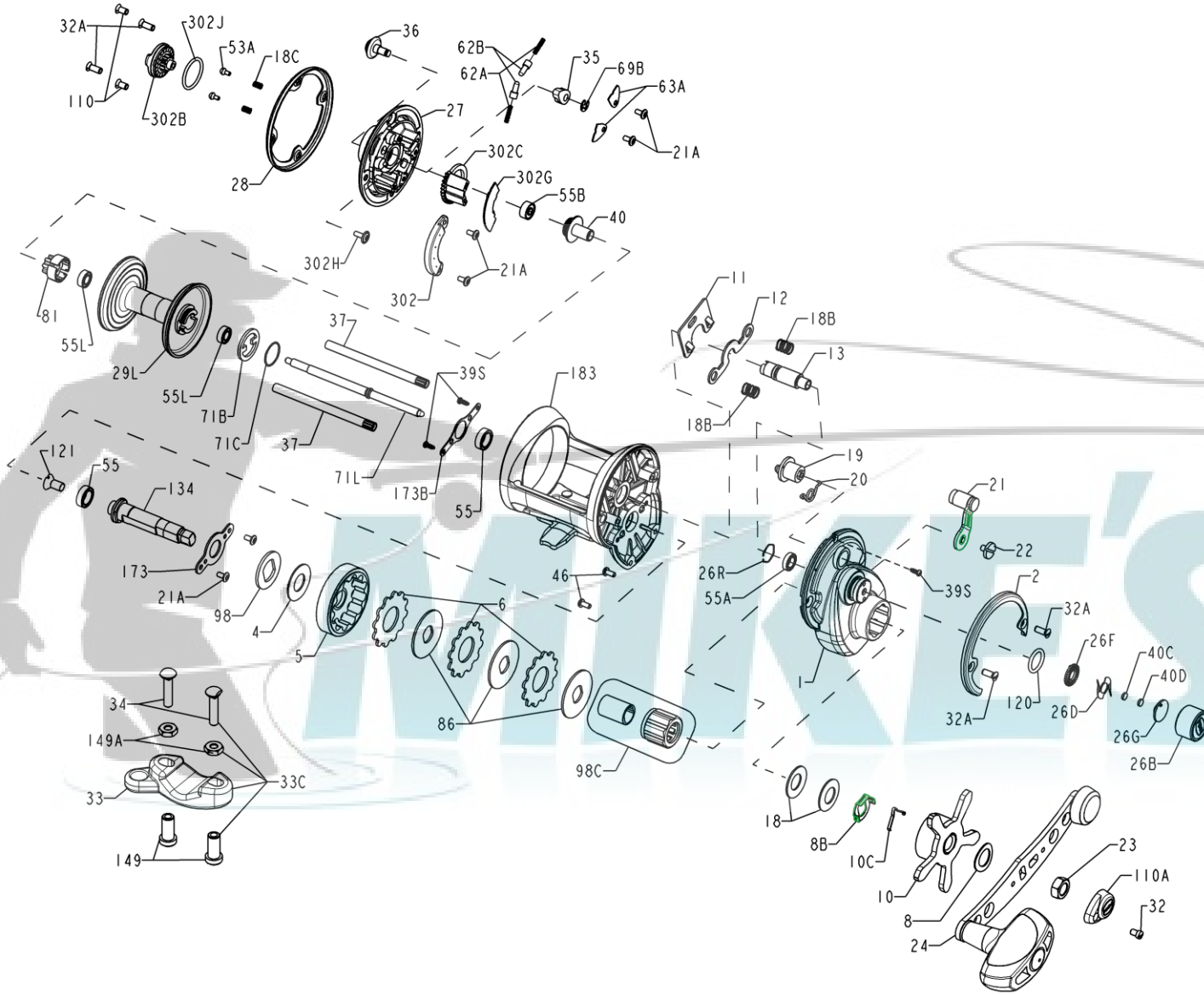




PARTS LIST FOR MODELS 515MAG2 & 525MAG2

REEL PART NOS. 1207532 (515MAG2) & 1207533 (525MAG2)



| KEY NO. | PART NO. | PENN NO. | DESCRIPTION |
|---------|----------|--------------|-------------------------------|
| 1 | 1214640 | 1-525MAG2 | Right Side Plate |
| 2 | 1214523 | 2-525MAG2 | Ring, Right Side Plate |
| 4 | 1180755 | 4-60 | Fiber Washer |
| 5 | 1214524 | 5-525MAG2 | Main Gear |
| 6 | 1237037 | 6-TRQ40 | Friction Drag Washer (3 req) |
| 8 | 1181056 | 8-60 | Washer, Tension |
| 8B | 1214525 | 8-525MAG2 | Spring Retainer |
| 10 | 1214526 | 10-525MAG2 | Star Drag Assembly |
| 10C | 1214527 | 10C-525MAG2 | Detent Spring |
| 11 | 1214528 | 11-525MAG2 | Eccentric Jack |
| 12 | 1214649 | 12-525MAG2 | Pinion Yoke |
| 13 | 1214650 | 13-525MAG2 | Pinion |
| 18 | 1214651 | 18-525MAG2 | Tension Spring Washer (2 req) |
| 18B | 1181624 | 18-525 | Spring (2 req) |
| 18C | 1181632 | 18C-15KG | Spring (2 req) |
| 19 | 1216239 | 19-525MAG2 | Eccentric |
| 20 | 1181785 | 20-525 | Spring |
| 21 | 1214704 | 21-525MAG2 | Lever, Eccentric |
| 21A | 1214652 | 21A-420G | Screw (6 req) |
| 22 | 1214705 | 22-525MAG2 | Eccentric Screw |
| 23 | 1181950 | 23-555 | Nut |
| 24 | 1214653 | 24A-525MAG2 | Handle Assembly |
| 26B | 1214706 | 26B-525MAG2 | Cap, Spool Tension Control |
| 26D | 1125769 | 26D-525MAG2 | Click Spring |
| 26F | 1125768 | 26F-525MAG2 | Click Plate "A" |
| 26G | 1125772 | 26G-525MAG2 | Click Plate "B" |
| 26R | 1214654 | 26R-525MAG2 | Ring, Retaining |
| 27 | 1214655 | 27-515MAG2 | Plate, Left Side (515MAG2) |
| 27 | 1214656 | 27-525MAG2 | Plate, Left Side (525MAG2) |
| 28 | 1214657 | 28-525MAG2 | Ring, Left Side |
| 29L | 1214634 | 29L-515MAG2 | Spool (515MAG2) |
| 29L | 1214658 | 29L-525MAG2 | Spool (525MAG2) |
| 32 | 1182708 | 32-15 | Screw |
| 32A | 1182722 | 32-310 | Screw (4 req) |
| 33 | 1182754 | 33-113 | Rod Clamp |
| 34 | 1182788 | 34-45 | Screw (2 req) |
| 33C | 1214659 | 33C-525MAG2 | Kit, Rod Clamp |
| 35 | 1214660 | 35-525MAG2 | Tongue, Click |
| 36 | 1214661 | 36-525MAG2 | Button, Click |
| 37 | 1214663 | 37-515MAG2 | Post, Frame (515MAG2) (2 req) |
| 37 | 1214662 | 37-525MAG2 | Post, Frame (525MAG2) (2 req) |
| 39S | 1183220 | 39-525 | Screw (3 req) |
| 40 | 1214664 | 40-525MAG2 | Bushing, Left Side Spindle |
| 40C | 1208115 | 40C-525MAG2 | Washer, Metal Thrust |
| 40D | 1125771 | 40D-525MAG2 | Washer, Rubber Thrust |
| 46 | 1183585 | 46A-4300 | Screw (2 req) |
| 53A | 1183846 | 53A-5600 | Pin, Click (2 req) |
| 55 | 1214665 | 55-525MAG2 | Bearing, Ball (2 req) |
| 55A | 1214666 | 55A-525MAG2 | Bearing, Ball |
| 55B | 1183880 | 55-113H | Bearing, Ball |
| 55L | 1192031 | 55L-965 | Bearing, Ball (2 req) |
| 62A | 1214667 | 62A-525MAG2 | Spring (2 req) |
| 62B | 1184038 | 62B-525MAG2 | Pin, Click (2 req) |
| 63A | 1214668 | 63A-525MAG2 | Cover, Click Spring (2 req) |
| 69B | 1184129 | 69B-600 | Ring, Retaining |
| 71B | 1214669 | 71B-525MAG2 | Plate, Clutch |
| 71C | 1214670 | 71C-525MAG2 | Retainer, Clutch Plate |
| 71L | 1214672 | 71L-515MAG2 | Spindle (515MAG2) |
| 71L | 1214671 | 71L-525MAG2 | Spindle (525MAG2) |
| 81 | 1184210 | 81-525MAG | Ratchet, Click |
| 86 | 1184251 | 86-49L | Washer, Keyed Drag (3 req) |
| 98 | 1214673 | 98-525MAG2 | Spacer |
| 98C | 1216190 | 98C-525MAG2 | Clutch / Sleeve Assembly |
| 110 | 1184436 | 110-50 | Screw (2 req) |
| 110A | 1214675 | 110A-525MAG2 | Cover, Handle Nut Lock |
| 120 | 1184522 | 120-113H | O-Ring |
| 121 | 1184529 | 121-525 | Screw |
| 134 | 1214676 | 134-525MAG2 | Stud, Gear |
| 149 | 1184702 | 149-45 | Nut, Rod Clamp (2 req) |
| 149A | 1184706 | 149-200 | Nut, Hex (2 req) |
| 173 | 1214677 | 173-525MAG2 | Retainer, Bearing |
| 173B | 1214678 | 173B-525MAG2 | Retainer, Bearing |
| 183 | 1214680 | 183-515MAG2 | Frame, Complete (515MAG2) |
| 183 | 1214679 | 183-525MAG2 | Frame, Complete (525MAG2) |
| 302 | 1214681 | 302-525MAG2 | Assembly, Magnet Housing |
| 302B | 1214682 | 302B-525MAG2 | Dial, Brake Adjustment |
| 302C | 1214683 | 302C-525MAG2 | Carrier, Magnet Shield |
| 302G | 1214684 | 302G-525MAG2 | Shield, Adjustable Magnet |
| 302H | 1214685 | 302H-525MAG2 | Screw |
| 302J | 1214686 | 302J-525MAG2 | O-Ring |