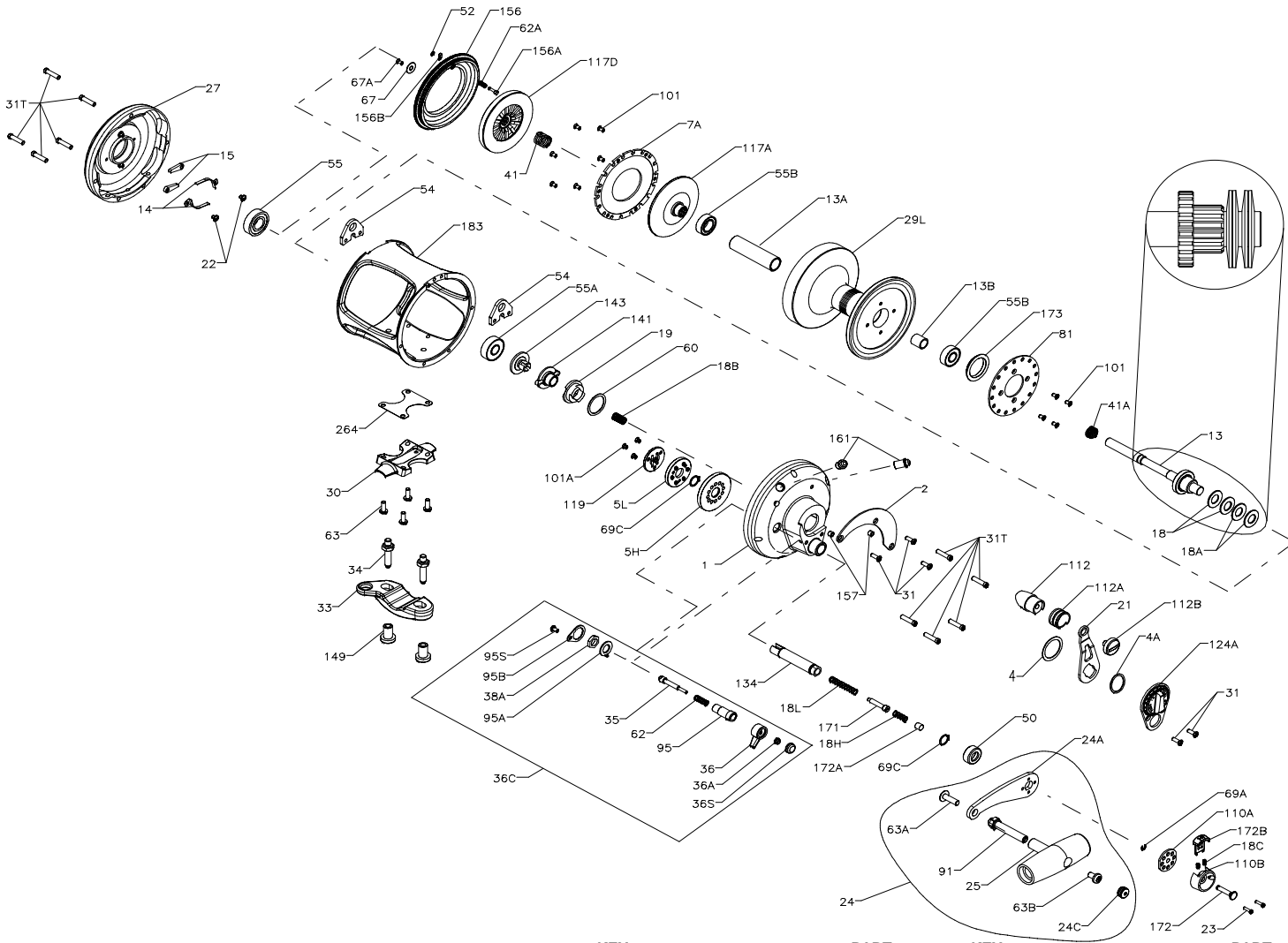




PARTS LIST FOR MODEL 50VSW



KEY NO.	DESCRIPTION	PART NO.
29	Spool	029L050VSW
30	Stand	030 050T
31	Short Screw (5 req.)	031T070
31T	Side Plate Screw (10 req.)	031T080
33	Rod Clamp	033 070
34	Clamp Screw (2 req.)	034 070
34C	Rod Clamp Screw w/Nut	034C070
35	Click Tongue	035 070
36	Click Button	036N050
36A	Click Button Nut	036 700
36C	Clicker Assembly	036C050VSW
36S	Click Button Cap	036S080ST
38A	Click Bushing Nut	038 710
41	Bearing Spring	041 050
41A	Drag Spring	041 070
50	Shield	050N030S
52	Retaining Ring	052 910
54	Harness Lug (2 req.)	054 050T
55	Ball Bearing	055 080
55A	Ball Bearing	055 050
55B	Ball Bearing (2 req.)	055 080ST
60	Thrust Washer	060 050
62	Click Spring	062 050
62A	Click Spring	062 545
63	Stand Screw (4 req.)	063 030T
63A	Screw	063A050
63B	Screw	063 050
67	Pinion Gear Washer	067 070
67A	Retaining Screw	067A070
69A	Retaining Ring	069B030S
69C	Retaining Ring (2 req.)	195 040
81	Ratchet	081 050
91	Handle Rivet	091N050
95	Click Tongue Bushing	095 070
95A	Retaining Plate	095A050
95B	Retaining Plate	095B070
95S	Retaining Plate Screw	046A704
101	Ratchet Screw (10 req.)	101 030
101A	Coupling Plate Screws (3 req.)	101 050S
110A	Handle Locking Plate	110A015KG
110B	Shift Housing	110B015KG
112	Eccentric Lever Knob	112 070
112A	Knob Sleeve	112A070
112B	Eccentric Knob Screw	112B070
117A	Drive Plate w/ Drag Washer	117A070
117D	Drive Plate w/ Drag Washer	117D070
119	Coupling Plate	119 015KG
124A	Bridge Cover Assembly	124L050VS
128	Low Gear Pins (6 req.)	128 050S
134	Gear Stud	134 050VS
141	Cam Follower	141 050VS
143	Preset Screw	143 050VS
149	Rod Clamp Nut (2 req.)	149 070
156	Drag Cover	156 050VS
156A	Lock Pin	156A030VS
156B	Lock Plate	156B030VS
157	Quadrant Spacing Bushing (2 req.)	157S012LT
161	Locating Pin Assembly (2 req.)	161C070
171	Shift Plunger	171 015KG
172	Shift Button (Low)	172 015KG
172A	Spring Spacer	172A050VS
172B	Shift Button (High)	172B015KG
173	Spool Bushing	173 050VS
183	Tube Frame	183 050VSW
264	Stand Gasket	264 30T

SPECIFICATIONS AND PRE-SETTING OF DRAG

LINE CAPACITY	GEAR RATIO	LINE CLASS	STRIKE SETTING	FULL OR MAX. SETTING
500yds/80 lb.	3.1-1 HIGH	80 lb	12-28 lbs	35-40 lbs
850yds/50 lb.	1.3-1 LOW	50 lb	12-17 lbs	21-26 lbs
550M/ 0,90mm	3.1-1 HIGH	37 kg	9-12, 5 kg	16-18 kg
780M/ 0,70mm	1.3-1 LOW	24 kg	5.5-8 kg	9.5-12 kg

KEY NO.	DESCRIPTION	PART NO.	KEY NO.	DESCRIPTION	PART NO.
1	Right Side Plate Assembly	001 050VS	18A	Disc Clutch Springs (2req.)	018 050W
2	Quadrant Ring	002 050VS	18B	Spring	018 349
4	Cam Thrust Washer	004 070	18C	Shift Button Spring (2)	018C015KG
4A	Teflon Thrust Washer	004 012LT	18H	Shift Spring (Heavy)	018H015KG
5H	Main Gear (High Speed)	005 050VS-HS	18L	Shift Spring (Light)	018L015KG
5L	Main Gear (Low Speed)	005 050VS-LS	19	Eccentric Cam	019 050VS
7A	Metal Drag Washer	007A050VS	21	Eccentric Lever	021 050VS
13	Pinion Gear	013 050VSW	22	Dog Spring Screw (2) req.)	022 109
13A	Spool Sleeve	013B050VSW	23	Screw, Handle (2 req.)	023 015KG
13B	Pinion Gear Sleeve	013B070	24	Handle Complete	024N030S
14	Dog Spring (2 req.)	014 050	24A	Handle Blank	024N030S-1
15	Dog (2 req.)	015 050	24C	Handle Knob Cap	024C050
18	Disc Clutch Spring (2 req.)	018 050TW	25	Knob Assembly	025 050
			27	Left Side Plate-Assembly	027 050VS

