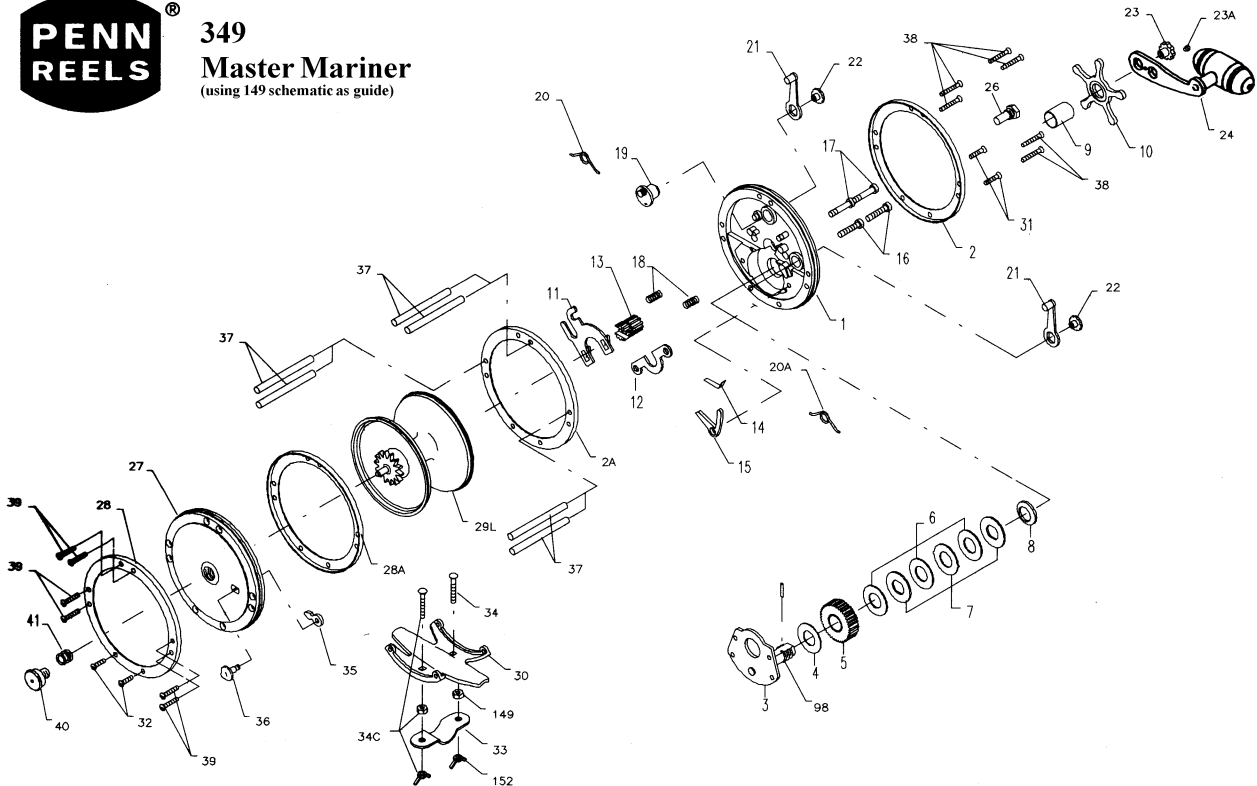




349 Master Mariner

(using 149 schematic as guide)



Penn Reel Parts list for:

Model: 349

Master Mariner

KEY PART

NO	NO.	DESCRIPTION
1	1-349	R.S. PLATE
2	2-349	R.S. RING
3	3-349	BRIDGE W/ SLEEVE
4	4-349	FIBER WASHER
5	5-349	MAIN GEAR
6	6-349	DRAG WASHER
7	7-349	METAL DISC SET
8	8-349	TENSION SPRING
9	9-349	SPACING SLEEVE
10	10-349	STAR DRAG
11	11-349	ECCENTRIC JACK
12	12-349	PINION YOKE
13	13-349	PINION GEAR
14	14-349	DOG SPRING
15	15-349	DOG
16	16-60CH	LOWER BRIDGE SCREW
17	17-60CH	UPPER BRIDGE SCREW
18	18-349	CLUTCH SPRING
19	19-60	ECCENTRIC
20	20-60L	ECCENTRIC SPRING
21	21-49	ECCENTRIC LEVER

KEY PART

NO	NO.	DESCRIPTION
22	22-60CH	ECCENTRIC SCREW
23	23-114	HANDLE SCREW
23A	110-60	HANDLE LOCK SCREW
24	24-349	COMPLETE HANDLE
26	26-349	R.S BEARING
27	27-349	L.S. PLATE
28	28-349	L.S. RING
29M	29M-349	METAL SPOOL
30	30-349	STAND
31	32-18	R.S. STAND SCREW
32	32-18	L.S. STAND SCREW
33	33-49	ROD CLAMP
34	34C-49	CLAMP SCREW W/ NUTS
35	35-114	CLICK TONGUE
36	36-114H	CLICK BUTTON
37	37-49	FRAME POST
38	39-9	R.S. POST SCREW
39	39-9	L.S. POST SCREW
40	40-349	L.S. BEARING
41	41-349	L.S. BEARING SPRING
98	98-349	BRIDGE SLEEVE

NOTE: Many of www.pennparts.com schematics include changes that were either made by Penn, or errors found and corrected by our parts dept.

Last update 6/19/03