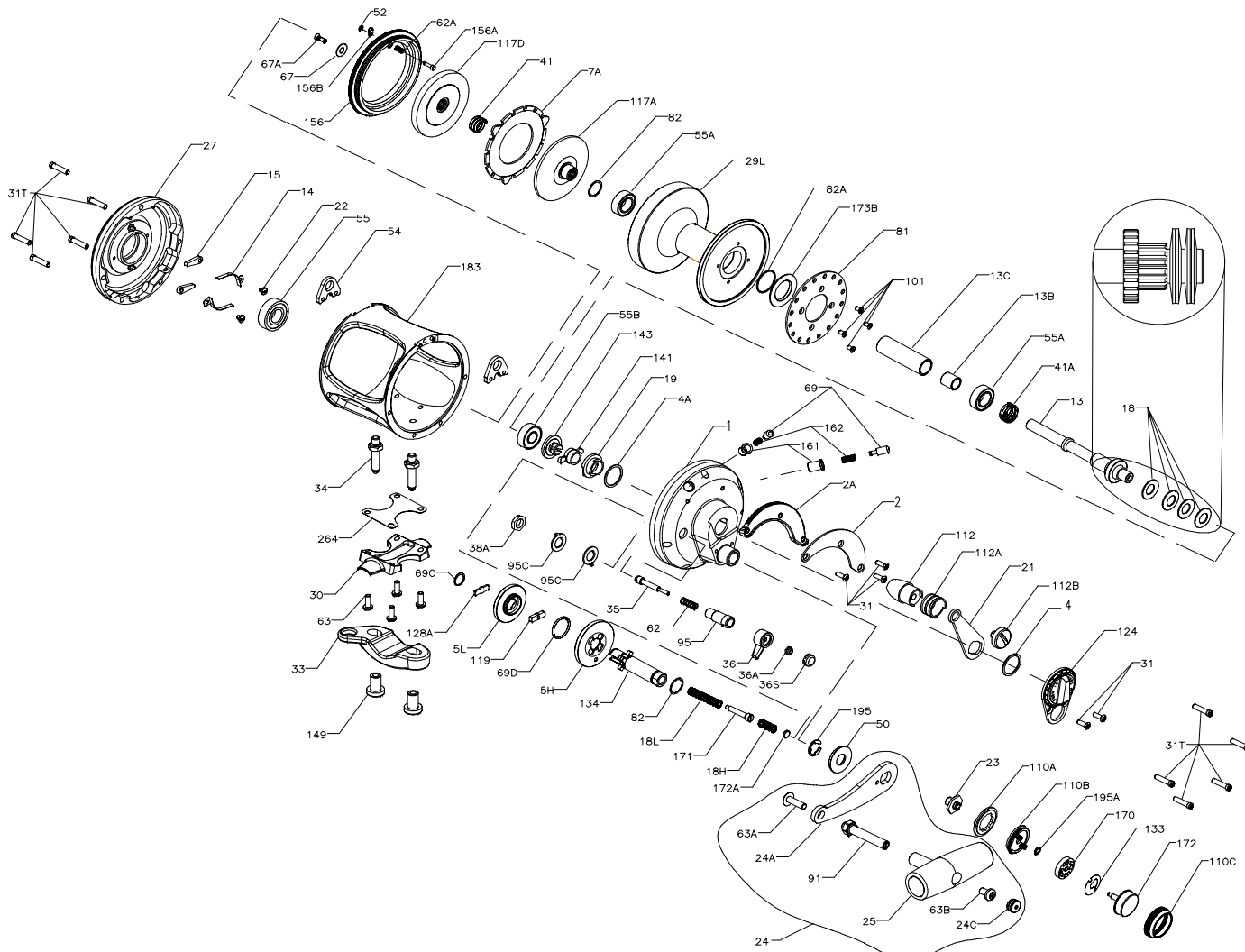




PARTS LIST FOR MODEL 30VSW



KEY NO.	DESCRIPTION	PART NO.
33	Rod Clamp	033 070
34	Clamp Screw (2 req.)	034 070
34C	Rod Clamp Screw w/Nut	034C070
35	Click Tongue	035 070
36	Click Button	036N050
36A	Click Button Nut	036 700
36S	Click Button Cap	036S080ST
38A	Click Bushing Nut	038 710
41	Spring	041 2.5FR
41A	Drag Spring	041 070
50	Shield	050 050VS
52	Retaining Ring	052 910
54	Harness Lug (2 req.)	054 030T
55	Ball Bearing	055 080
55A	Ball Bearing (2 req.)	055 080ST
55B	Ball Bearing	020 704
62	Click Spring	062 050
62A	Click Spring	062 545
63	Stand Screw (4 req.)	063 030T
63A	Screw	063A050
63B	Screw	063 050
67	Pinion Gear Washer	067 070
67A	Plate Screw	067A070
69	Locating Pin (2 req.)	069 030VS
69C	Retaining Ring	195 024KG
69D	Retaining Ring	069C245
81	Ratchet	081 050
82	Shim (2 req.)	154 080
82A	Shim	082 030VS
91	Handle Rivet	091N050
95	Click Tongue Bushing	095 070
95C	Click Bushing Washer (2 req.)	095A050
101	Ratchet Screw (4 req.)	101 030
110A	Ring	110A030VS
110B	Shift Base	110B030VS
110C	Shift Button Retainer	110C030VS
112	Eccentric Lever Knob Ass.	112 030VS
112A	Knob Sleeve	112A030VS
112B	Eccentric Knob Screw	112B070
117A	Drive Plate w/ Drag Washer	117A050S
117D	Drive Plate w/ Drag Washer	117 050S
119	Shift Plate	119 024KG
124	Bridge Cover Asm.	124L030VS
128A	Drive Plate	128A024KG
133	Retaining Plate	133 030VS
134	Gear Stud	134 030VS
141	Cam Follower	141 030VS
143	Preset Screw	143 016VS
149	Rod Clamp Nut (2 req.)	149 070
156	Drag Cover	156 030VS
156A	Lock Pin	156A030VS
156B	Lock Plate	156B030VS
161	Locating Pin Bushing (2 req.)	161 030VS
162	Locating Pin Spring (2 req.)	018B965
170	Catch Assembly	170 030VS
171	Shift Plunger	171 030VS
172	Shift Button	172 030VS
172A	Spacer	172B030VS
172B	Bearing Retainer	173 050VS
183	Tube Frame	183 030VS
195	Retaining Ring	195 040
195A	Retaining Ring	067 030VS
264	Stand Gasket	264 030T
23	Shift Spring (Heavy)	018H030VS
18H	Shift Spring (Light)	018L030VS
18L	Shift Spring (Light)	018L030VS
19	Eccentric Cam	019 030VS
21	Eccentric Lever	021 030VS
22	Dog Spring Screw (2 req.)	022 109
23	Screw	023 030VS
24	Handle Complete	024 030VS
24A	Handle Blank	024 030VS-1
24C	Handle Knob Cap	024C050
25	Knob Assembly	025 050
27	Left Side Plate-Assembly	027 030VS
29	Spool	029L030VSW
30	Stand	030 020T
31	Short Screw (5 req.)	031T070
31T	Side Plate Screw (10 req.)	031T080

KEY NO.	DESCRIPTION	PART NO.
1	Right Side Plate Assembly	001 030VS
2	Quadrant Ring	002 030VS
2A	Quadrant Spacer	002A030VS
4	Thrust Washer	004 012LT
4A	Cam Bushing	004 030VS
5H	Main Gear (High Speed)	005 030VSHS
5L	Main Gear (Low Speed)	005 030VSL
7A	Metal Drag Washer	007A030VS
13	Pinion Gear	013 030VSW
13B	Pinion Gear Sleeve	013B070
13C	Spool Sleeve	013B030VS
14	Dog Spring (2 req.)	014 050
15	Dog (2 req.)	015 050
18	Disc Clutch Spring (4 req.)	018 030

KEY NO.	DESCRIPTION	PART NO.
18H	Shift Spring (Heavy)	018H030VS
18L	Shift Spring (Light)	018L030VS
19	Eccentric Cam	019 030VS
21	Eccentric Lever	021 030VS
22	Dog Spring Screw (2 req.)	022 109
23	Screw	023 030VS
24	Handle Complete	024 030VS
24A	Handle Blank	024 030VS-1
24C	Handle Knob Cap	024C050
25	Knob Assembly	025 050
27	Left Side Plate-Assembly	027 030VS
29	Spool	029L030VSW
30	Stand	030 020T
31	Short Screw (5 req.)	031T070
31T	Side Plate Screw (10 req.)	031T080

SPECIFICATIONS AND PRE-SETTING OF DRAG

LINE CAPACITY	GEAR RATIO	LINE CLASS	STRIKE SETTING	FULL OR MAX. SETTING
600yds/50 lb.	3.8-1 HIGH	50 lb	12-17 lbs	21-26 lbs
900yds/30 lb.	1.6 LOW	30 lb	8-10 lbs	14-16 lbs
650M/ 0,70mm	3.8-1 HIGH	24 kg	5,5-8 kg	9,5-12 kg
825M/ 0,55mm	1.6 LOW	15 kg	3,5-4,5 kg	6-7 kg