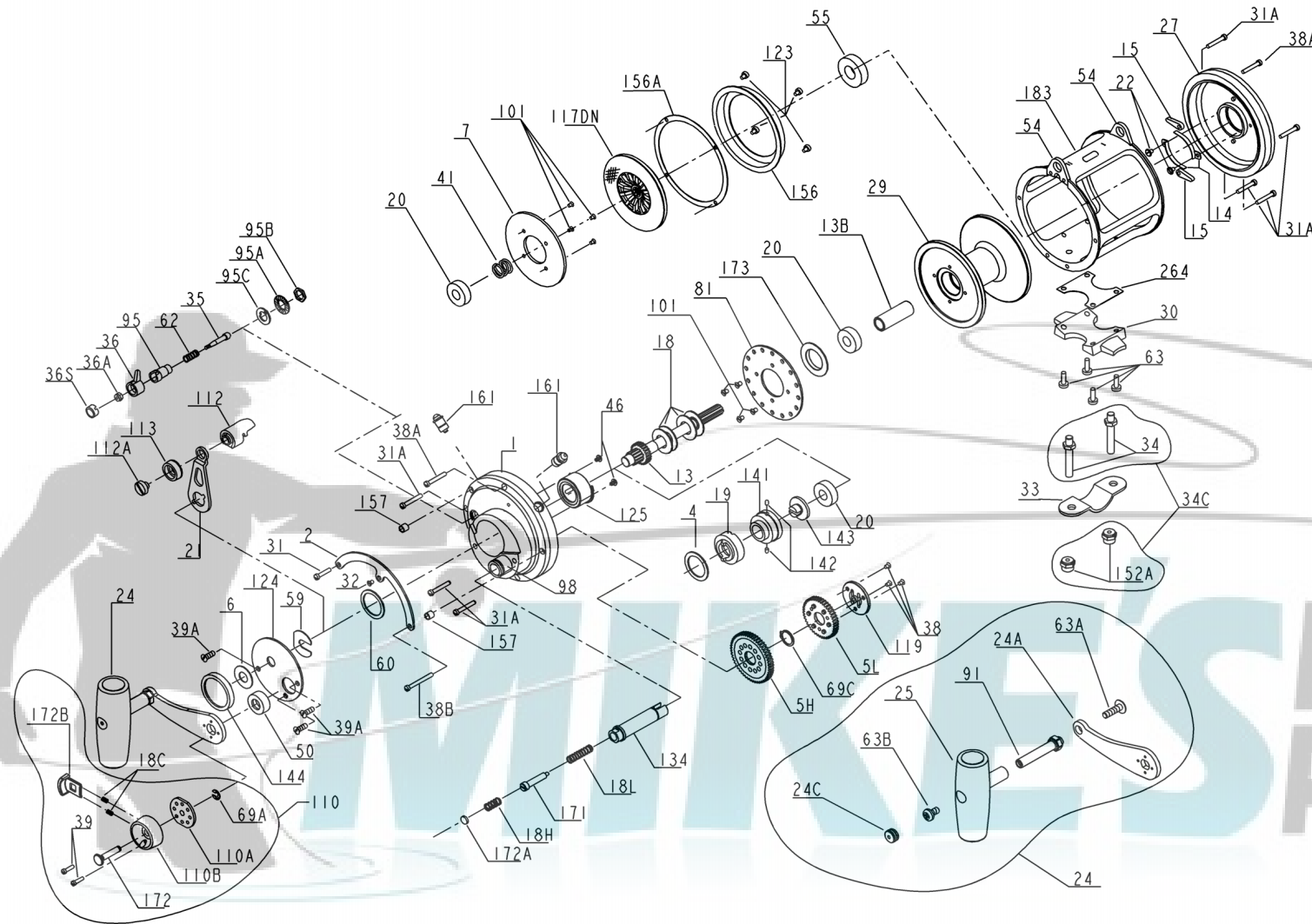




PARTS LIST FOR MODEL 30S



KEY NO.	DESCRIPTION	PART NO.
31	Short Quadrant Screw	031T020
31A	Frame Screw (7 req.)	031T080
32	Center Quadrant Screw	032T020
33	Rod Clamp	033 990
34	Clamp Screw (2 req.)	034 050T
34C	Rod Clamp Screw w/Nut	034C050T
35	Click Tongue	035 050N
36	Click Button	036N050
36A	Click Button Nut	036 700
36S	Click Button Cap	036S080ST
38	Coupling Plate Screw (3 req.)	101 050S
38A	Frame Screw (2 req.)	038T050
38B	Long Quadrant Screw	038T080
39	Shift Housing Screw (2 req.)	023 015KG
39A	Cover Screw (3 Req.)	039A080S
41	L.S. Bearing Spring	041 050
46	Cam Housing Screw (2 req.)	046A704
50	Shield	050N030S
54	Harness Lug (2 req.)	054 030T
55	Ball Bearing	055 080
59	Slotted Washer	059 050
60	Backing Washer	060 050
62	Click Spring	062 050
63	Stand Screw (4 req.)	063 030T
63A	Screw	063A050
63B	Screw	063 050
69A	Retaining Ring	069B030S
69C	Retaining Ring	069C030S
81	Ratchet	081 050
91	Handle Rivet	091N050
95	Click Tongue Bushing	095 050
95A	Click Bushing Washer	095A020
95B	Click Tongue Washer	038 710
95C	Click Bushing Washer	095A050
98	Bridge Bushing	098030SN
101	Drive Plate Screw (8 req.)	101 030
110	Shifter Assembly	110 015KG
110A	Handle Locking Plate	110A015KG
110B	Handle Lock Cover	110B015KG
112	Eccentric Lever Knob	112 050
112A	Eccentric Knob Screw	112A050
113	Eccentric Lever Cap	113 050
117DN	Drive Plate w/ Drag Washer	117DN030
119	Coupling Plate	119 015KG
123	Drag Cover Screw (4 req.)	123 050
124	Bridge Cover	124 030S
125	Eccentric Cam Housing	125 030S
134	Gear Stud	134 030S
141	Cam Follower	141 030
142	Cam Follower Pin (2 req.)	142 050
143	Adjusting Screw	143 030
144	Preset Knob	144 050
152A	Rod Clamp Nut (2 req.)	152A050T
156	Drag Cover	156 030T
156A	Drag Cover Seal	156A030
157	Quadrant Spacing Bushing (2)	157 050
161	Locating Pin Assembly (2 req.)	161C070
171	Plunger	171 015KG
172	Shift Button	172 015KG
172A	Spring Spacer	172A015KG
172B	Shift Release Button	172B015KG
173	Spool Bushing	173 030T
183	Tube Frame	183 030S
264	Stand Gasket	264 030T
18H	Shift Spring (Heavy)	018H015KG
18L	Shift Spring (Light)	018L015KG
188	Shift Spring (Light)	018L015KG
19	Eccentric Cam	019 030W
20	Ball Bearing (3 req.)	020 704
21	Eccentric Lever	021 030S
22	Dog Spring Screw (2 req.)	022 109
24	Handle Complete	024N030S
24A	Handle Blank	024N030S-1
24C	Handle Knob Cap	024C050
25	Knob Assembly	025 050
27	Left Side Plate-Assembly	027 030T
29	Spool	029L030T
30	Stand	030 020T

KEY NO.	DESCRIPTION	PART NO.
1	Right Side Plate Assembly	001 030SN
2	Quadrant Ring	002 030
4	Cam	004 030
5H	Main Gear (High Speed)	005N030HS
5L	Main Gear (Low Speed)	005 030LS
6	Spacer Washer	006 155
7	Metal Drag Washer	007 030
13	Pinion Gear	013 030S
13B	Spool Sleeve	013B030T
14	Dog Spring (2 req.)	014 050
15	Dog	015 050
18	Disc Clutch Spring (4 req.)	018 030
18C	Shift Button Spring (2 req.)	018C015KG

KEY NO.	DESCRIPTION	PART NO.
18H	Shift Spring (Heavy)	018H015KG
18L	Shift Spring (Light)	018L015KG
19	Eccentric Cam	019 030W
20	Ball Bearing (3 req.)	020 704
21	Eccentric Lever	021 030S
22	Dog Spring Screw (2 req.)	022 109
24	Handle Complete	024N030S
24A	Handle Blank	024N030S-1
24C	Handle Knob Cap	024C050
25	Knob Assembly	025 050
27	Left Side Plate-Assembly	027 030T
29	Spool	029L030T
30	Stand	030 020T