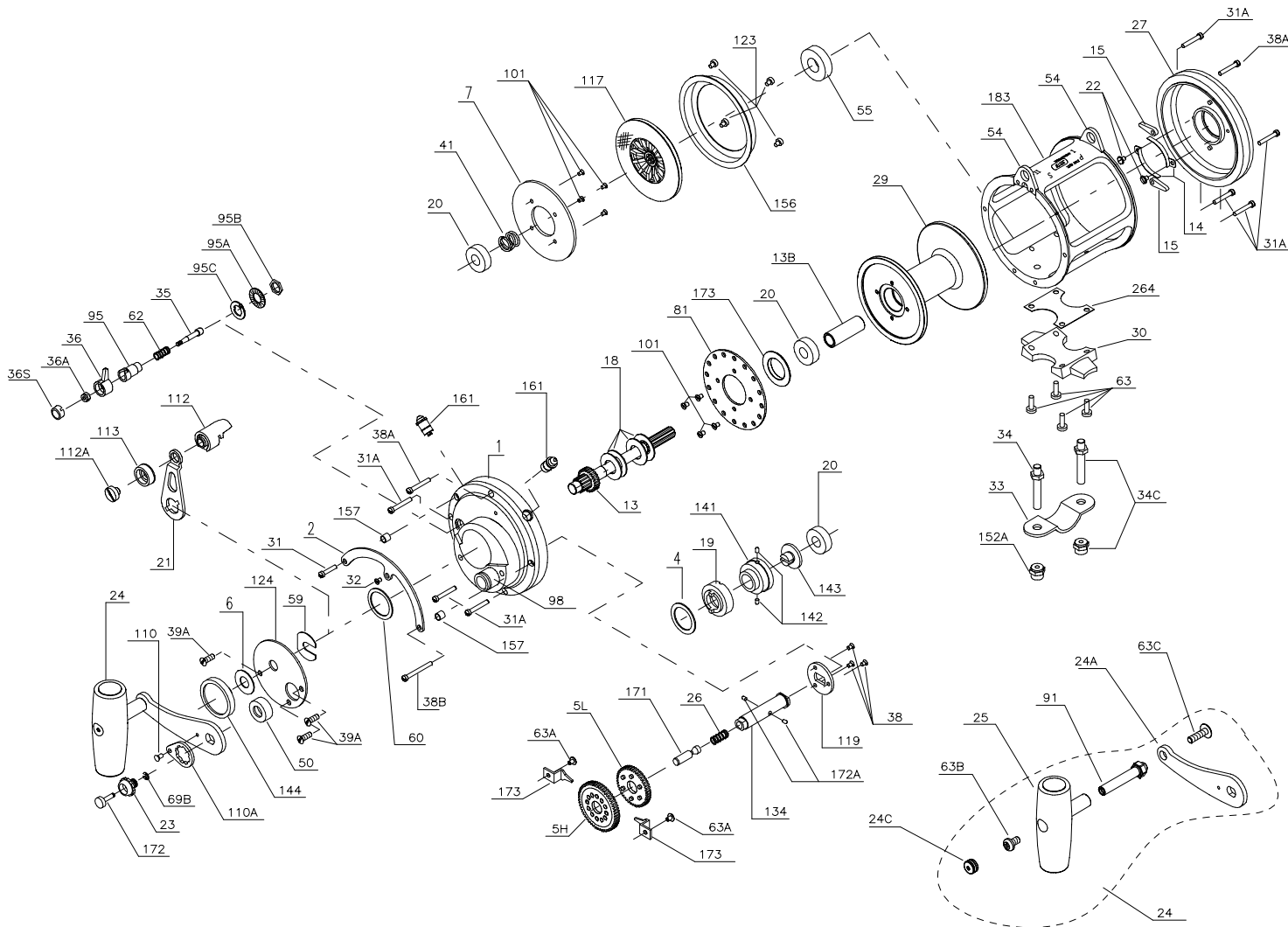




PARTS LIST FOR MODEL 30SW



KEY NO.	DESCRIPTION	PART NO.	DESCRIPTION	PART NO.
30	Stand	030 020T		
31	Short Quadrant Screw	031T020		
31A	Frame Screw (7 req.)	031T080		
32	Center Quadrant Screw	032T020		
33	Rod Clamp	033 114		
34	Ringed Rod Clamp (Optional)	*033R114		
34C	Clamp Screw (2 req.)	034 050T		
34C	Rod Clamp Screw w/Nut	034C050T		
35	Click Tongue	035 050N		
36	Click Button	036N050		
36A	Click Button Nut	036 700		
36S	Click Button Cap	036S080ST		
38	Coupling Plate Screw (3 req.)	101 050S		
38A	Frame Screw (2 req.)	038T050		
38B	Long Quadrant Screw	038T080		
39A	Cover Screw (3 req.)	039A080S		
41	L.S. Bearing Spring	041 050		
*	Cam Housing Screw (2 req.)	046A704		
50	Shield	050 030S		
54	Harness Lug (2 req.)	054 030T		
55	Ball Bearing	055 080		
59	Slotted Washer	059 050		
60	Backing Washer	060 050		
62	Click Spring	062 050		
63	Stand Screw (4 req.)	063 030T		
63A	Hold Down Screw	063 349		
63B	Handle Screw	063 050		
63C	Handle Screw	063A050		
69B	Retaining Ring	069B050		
81	Ratchet	081 050		
91	Handle Rivet	091N050		
95	Click Tongue Bushing	095 050		
95A	Click Bushing Washer	095A020		
95B	Click Bushing Nut	038 710		
95C	Click Bushing Washer	095A050		
98	Bridge Bushing	098 030SN		
101	Drive Plate Screw (8 req.)	101 030		
110	Handle Lock Screw	110 050		
110A	Handle Locking Plate	110A050		
112	Eccentric Lever Knob	112 050		
112A	Eccentric Knob Screw	112A050		
113	Eccentric Lever Cap	113 050		
117	Drive Plate w/ Drag Washer	117D030		
119	Coupling Plate	119 030S		
123	Drag Cover Screw (4 req.)	123 050		
124	Bridge Cover	124 030S		
*	Cam Housing	125 030S		
134	Gear Stud	134 050S		
141	Cam Follower	141 030		
142	Cam Follower Pin (2 req.)	142 050		
143	Adjusting Screw	143 030		
144	Preset Knob	144 050		
152A	Rod Clamp Acorn Nut (2 req.)	152A050T		
156	Drag Cover	156 030T		
157	Quadrant Spacer Bushing (2 req.)	157 050		
161	Locating Pin Assembly (2 req.)	161C070		
171	Plunger	171 050S		
172	Plunger Cap	172 050S		
172A	Plunger Pin (2 req.)	172A050S		
173	Gear Retainer	173 050S		
173B	Spool Bushing	173 030T		
183	Tube Frame	183 030SW		
264	Stand Gasket	264 030T		
19	Eccentric Cam	019 030W		
20	Ball Bearing (3 req.)	020 704		
21	Eccentric Lever	021 030S		
22	Dog Spring Screw (2 req.)	022 109		
23	Handle Screw	023 050S		
24	Handle Complete	024 030TW		
24A	Handle Blank Only	024 030TW-1		
24C	Handle Knob Cap	024C050		
25	Handle Knob Assembly	025 050		
26	Gear Stud Spring	018 349		
27	L.S. Plate Assembly	027 030T		
29	Spool	029L030TW		

KEY NO.	DESCRIPTION	PART NO.
1	Right-Side Plate Assembly	001 030SN
2	Quadrant Ring	002 030SN
4	Cam Thrust Washer	004 030
5H	Main Gear High Speed	005N030HS
5L	Main Gear Low Speed	005 030LS
6	Spacer Washer	006 155
7	Metal Drag Washer	007 030
13	Pinion Gear	013 030SW
13B	Spool Sleeve	013B030TW
14	Dog Spring (2 req.)	014 050
15	Dog (2 req.)	015 050
18	Disc Clutch Spring (4 req.)	018 030

KEY NO.	DESCRIPTION	PART NO.
19	Eccentric Cam	019 030W
20	Ball Bearing (3 req.)	020 704
21	Eccentric Lever	021 030S
22	Dog Spring Screw (2 req.)	022 109
23	Handle Screw	023 050S
24	Handle Complete	024 030TW
24A	Handle Blank Only	024 030TW-1
24C	Handle Knob Cap	024C050
25	Handle Knob Assembly	025 050
26	Gear Stud Spring	018 349
27	L.S. Plate Assembly	027 030T
29	Spool	029L030TW

