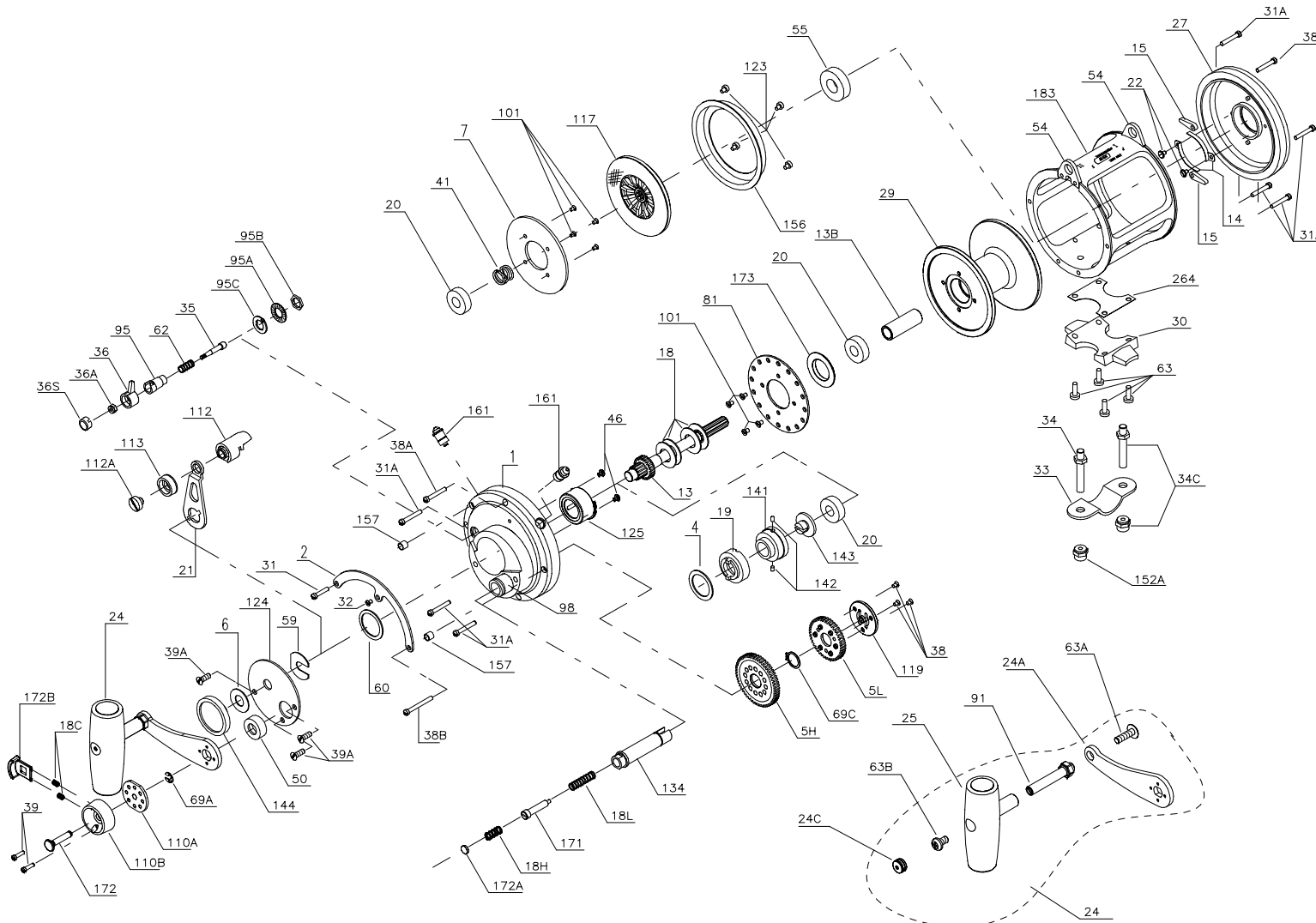




# PARTS LIST FOR MODEL 30S



KEY NO.	DESCRIPTION	PART NO.	KEY NO.	DESCRIPTION	PART NO.
27	Left Side Plate-Assembly	027 030T	18C	Shift Button Spring (2 req.)	018C015KG
29	Spool	029L030T	18H	Shift Spring (Heavy)	018H015KG
30	Stand	030 020T	18L	Shift Spring (Light)	018L015KG
31	Short Quadrant Screw	031T020	19	Eccentric Cam	019 030W
31A	Frame Screw (7 req.)	031T080	20	Ball Bearing (3 req.)	020 704
32	Center Quadrant Screw	032T020	21	Eccentric Lever	021 030S
33	Rod Clamp	033 990	22	Dog Spring Screw (2 req.)	022 109
34	Clamp Screw (2 req.)	034 050T	24	Handle Complete	024N030S
34C	Rod Clamp Screw w/Nut	034C050T	24A	Handle Blank	024N030S-1
35	Click Tongue	035 050N	24C	Handle Knob Cap	024C050
36	Click Button	036N050	25	Knob Assembly	025 050
36A	Click Button Nut	036 700			
36S	Click Button Cap	036S080ST			
38	Coupling Plate Screw (3 req.)	101 050S			
38A	Frame Screw (2 req.)	038T050			
38B	Long Quadrant Screw	038T080			
39	Shift Housing Screw (2 req.)	023 015KG			
39A	Cover Screw (3 Req)	039A080S			
41	L.S. Bearing Spring	041 050			
46	Cam Housing Screw (2 req.)	046A704			
50	Shield	050N030S			
54	Harness Lug (2 req.)	054 030T			
55	Ball Bearing	055 080			
59	Slotted Washer	059 050			
60	Backing Washer	060 050			
62	Click Spring	062 050			
63	Stand Screw (4 req.)	063 030T			
63A	Screw	063A050			
63B	Screw	063 050			
69A	Retaining Ring	069B030S			
69C	Retaining Ring	069C030S			
81	Ratchet	081 050			
91	Handle Rivet	091N050			
95	Click Tongue Bushing	095 050			
95A	Click Bushing Washer	095A020			
95B	Click Tongue Bushing	038 710			
95C	Click Bushing Washer	095A050			
98	Bridge Bushing	098030SN			
101	Drive Plate Screw (8 req.)	101 030			
110A	Handle Locking Plate	110A015KG			
110B	Handle Lock Cover	110B015KG			
112	Eccentric Lever Knob	112 050			
112A	Eccentric Knob Screw	112A050			
113	Eccentric Lever Cap	113 050			
117	Drive Plate w/ Drag Washer	117D030			
119	Coupling Plate	119 015KG			
123	Drag Cover Screw (4 req.)	123 050			
124	Drag Cover	124 030S			
125	Eccentric Cam Housing	125 030S			
134	Gear Stud	134 030S			
141	Cam Follower	141 030			
142	Cam Follower Pin (2 req.)	142 050			
143	Adjusting Screw	143 030			
144	Preset Knob	144 050			
152A	Rod Clamp Nut (2 req.)	152A050T			
156	Drag Cover	156 030T			
157	Quadrant Spacing Bushing (2	157 050			
161	Locating Pin Assembly (2 req.)	161C070			
171	Plunger	171 015KG			
172	Shift Button	172 015KG			
172A	Spring Spacer	172A015KG			
172B	Shift Release Button	172B015KG			
173	Spool Bushing	173 030T			
183	Tube Frame	183 030S			
264	Stand Gasket	264 030T			

KEY NO.	DESCRIPTION	PART NO.
1	Right Side Plate Assembly	001 030SN
2	Quadrant Ring	002 030
4	Cam	004 030
5H	Main Gear (High Speed)	005N030HS
5L	Main Gear (Low Speed)	005 030LS
6	Spacer Washer	006 155
7	Metal Drag Washer	007 030
13	Pinion Gear	013 030S
13B	Spool Sleeve	013B030T
14	Dog Spring (2 req.)	014 050
15	Dog	015 050
18	Disc Clutch Spring (4 req.)	018 030

KEY NO.	DESCRIPTION	PART NO.
18C	Shift Button Spring (2 req.)	018C015KG
18H	Shift Spring (Heavy)	018H015KG
18L	Shift Spring (Light)	018L015KG
19	Eccentric Cam	019 030W
20	Ball Bearing (3 req.)	020 704
21	Eccentric Lever	021 030S
22	Dog Spring Screw (2 req.)	022 109
24	Handle Complete	024N030S
24A	Handle Blank	024N030S-1
24C	Handle Knob Cap	024C050
25	Knob Assembly	025 050

