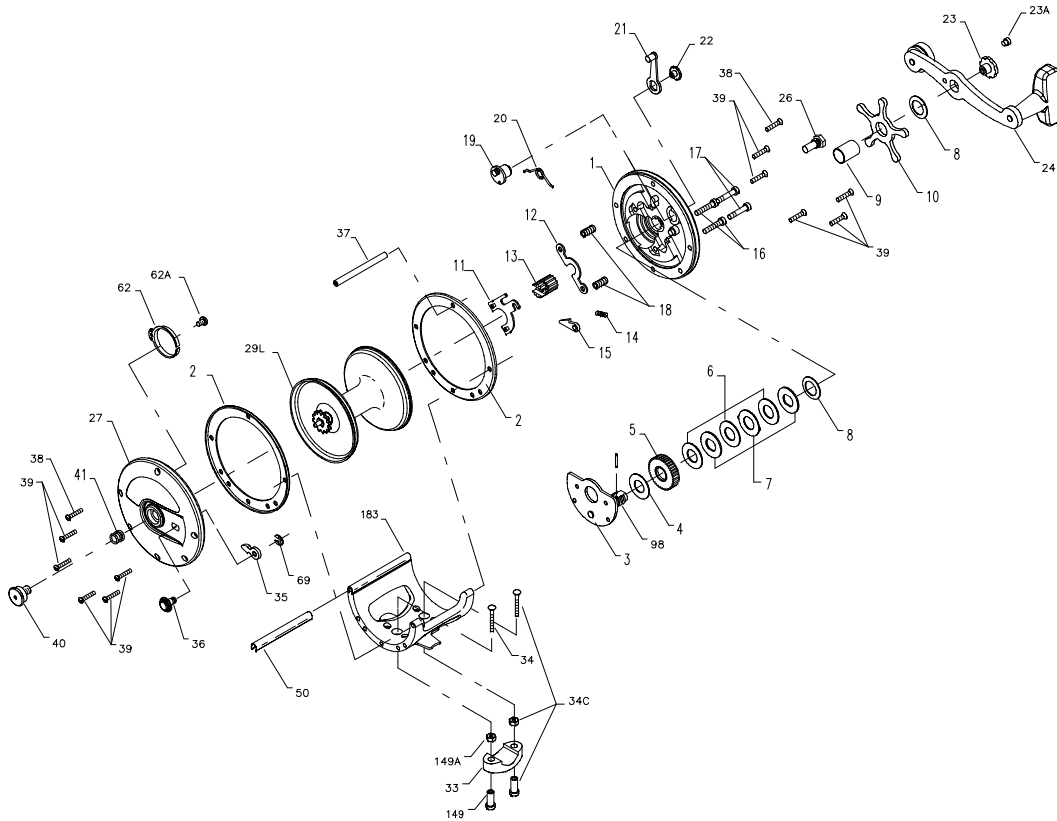




PARTS LIST FOR MODELS 267 AND 268



KEY NO.	267 PART NO.	268 PART NO.	DESCRIPTION
1	001 267	001 267	Right Side Plate
2	002 267	002 267	Right Side Ring (2 req.)
3	003 066	003 066	Bridge w/Sleeve
4	004 060	004 060	Fiber Washer
5	005 066	005 066	Main Gear
6	006 113	006 113	Drag Washer (3 req.)
7	007C060	007C060	Metal Washer Set
8	008 060	008 060	Tension Spring (2 req.)
9	009 066	009 066	Spacing Sleeve
10	010 066	010 066	Star Drag Wheel
11	011 113	011 113	Eccentric Jack
12	012 060	012 060	Pinion Yoke
13	013 049	013 049	Pinion
14	014 099	014 099	Dog Spring
15	015 099	015 099	Dog
16	016 060CH	016 060CH	Lower Bridge Screw
17	017 060CH	017 060CH	Upper Bridge Screw
18	018 060	018 060	Clutch Spring
19	019 267	019 267	Eccentric
20	020 267	020 267	Eccentric Spring
21	021 066	021 066	Eccentric Lever
22	022 060CH	022 060CH	Eccentric Screw
23	023 060	023 060	Handle Screw
23A	110 060	110 060	Handle Lock Screw
24	024 066	024 066	Handle
26	026 060	026 060	Right Side Bearing
27	027 267	027 268	Left Side Plate
29L	029L113	029L268	Spool
33	033 113	033 113	Rod Clamp
34	034 045	034 045	Rod Clamp Screw (2 req.)
34C	034C045	034C045	Rod Clamp Screw w/Nut
35	035 060	035 060	Click Tongue
36	036 267	036 267	Click Button
37	037 113	037 113HLW	Frame Post
38	039 005	039 005	Frame Post Screw (2 req.)
39	039 267	039 267	Side Plate Screw (10 req.)
40	040 060	040 060	Left Side Bearing
41	041 060	041 060	Left Side Bearing Spring
50	050 113HL	050 113HLW	Frame Post Cover
62	062 309	062 309	Click Spring
62A	063 209	063 209	Click Spring Screw
69	069B600	069B600	Retaining Ring
98	098 060	098 060	Gear Sleeve
149	149 045	149 045	Rod Clamp Nut (2 req.)
149A	149 200	149 200	Rod Clamp Hex Nut (2 req.)
183	183 267T	183 268T	Frame