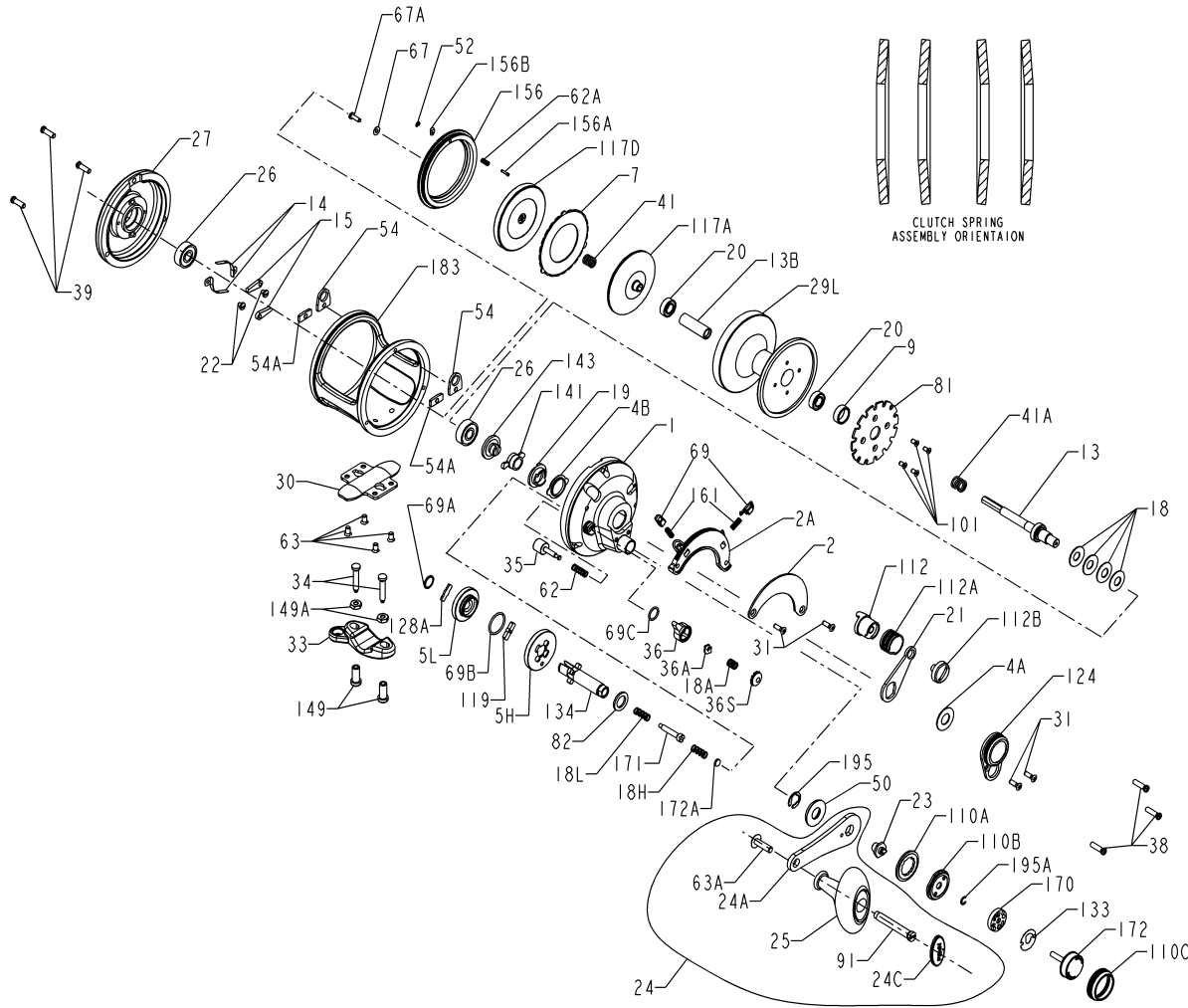




PARTS LIST FOR MODEL 16VSX



KEY NO.	DESCRIPTION	PART NO.
26	Bearing (2 req.)	026N040
27	Left Side Plate-Assembly	027 016VS
29L	Spool	029L016VS
30	Stand	030 016VS
31	Short Screw (4 req.)	031T070
33	Rod Clamp	033 016VS
34	Clamp Screw (2 req.)	034 016VS
34C	Rod Clamp Screw w/Nut	034C114HLW
35	Click Tongue	035 016VSX
36	Click Knob	036 016VS
36A	Click Cam Follower	036A016VS
36S	Click Cap	036S016VS
38	Side Plate Screw (3 req.)	038 016VS
39	Side Plate Screw (3 req.)	039 016VS
41	Bearing Spring	041 109
41A	Drag Spring	041 060
50	Shield	050 030VS
52	Retaining Ring	052 016VS
54	Harness Lug (2 req.)	054 016S
54A	Harness Lug Plug (2 req.)	054A016VS
62	Click Spring	062 050
62A	Dog Spring	014 099
63	Screw	031 016VS
63A	Screw	063A016VS
67	Pinion Gear Washer	067 016VS
67A	Screw	067A016VS
69	Locating Pin (2 req.)	069 012VS
69A	Retaining Ring	195 024KG
69B	Retaining Ring	069C245
69C	Retaining Ring	069 016VS
81	Ratchet	081 016VS
82	Shim	082 024KG
91	Handle Rivet	091 016VS
101	Ratchet Screw (4 req.)	101 030
110A	Ring	110A030VS
110B	Shift Base	110B030VS
110C	Shift Button Retainer	110C030VS
112	Eccentric Lever Knob Assembly	112 030VS
112A	Knob Sleeve	112A030VS
112B	Eccentric Knob Screw	112B070
117A	Inner Drive Plate	117AN016VS
117D	Outer Drive Plate	117DN016VS
118	Screw (4 req.)	118 080
119	Shift Plate	119 024KG
124	Bridge Cover Assembly	124L016VS
128A	Drive Plate	128A024KG
133	Retaining Plate	133 030VS
134	Gear Stud	134 016VS
141	Cam Follower	141 030VS
143	Preset Screw	143 016VS
149	Rod Clamp Nut (2 req.)	149 045
149A	Nut	149 200
156	Drag Cover	156 016VS
156A	Pin	156A016VS
156B	Plate	156B016VS
161	Locating Pin Spring (2 req.)	162 050
170	Catch Assembly	170 030VS
171	Shift Plunger	171 015KG
172	Shift Button	172 030VS
172A	Spacer	172A015KG
183	Tube Frame	183 016VSX
195	Retaining Ring	195 040
195A	Retaining Ring	067 030VS
205	Knob Assembly	025 113HN

KEY NO.	DESCRIPTION	PART NO.	KEY NO.	DESCRIPTION	PART NO.
1	Right Side Plate Assembly	001 016VS	18	Disc Clutch Spring (4 req.)	018 016VS
2	Quadrant Ring	002 016VS	18A	Click Spring	018 525
2A	Quadrant Ratchet Plate	002A016VS	18H	Shift Spring (Heavy)	018H030VS
4A	Thrust Washer	004 012LT	18L	Shift Spring (Light)	018L030VS
4B	Cam Thrust Washer	004 030VS	19	Eccentric Cam	019 016VS
5H	Main Gear (High Speed)	005 016VSHSX	20	Ball Bearing (2 req.)	020 722
5L	Main Gear (Low Speed)	005 016VLSX	21	Eccentric Lever	021 016VS
7	Metal Drag Washer	007 016VS	22	Dog Spring Screw (2 req.)	022 109
9	Spacing Sleeve	009 016VS	23	Screw	023 030VS
13	Pinion Gear	013 016VSX	24	Handle Complete	024 016VS
13B	Spool Sleeve	013B016VS	24A	Handle Blank	024A 016VS-1
14	Dog Spring (2 req.)	014 016S	24C	Handle Knob Cap	024C113HN
15	Dog (2 req.)	015 050	25	Knob Assembly	025 113HN