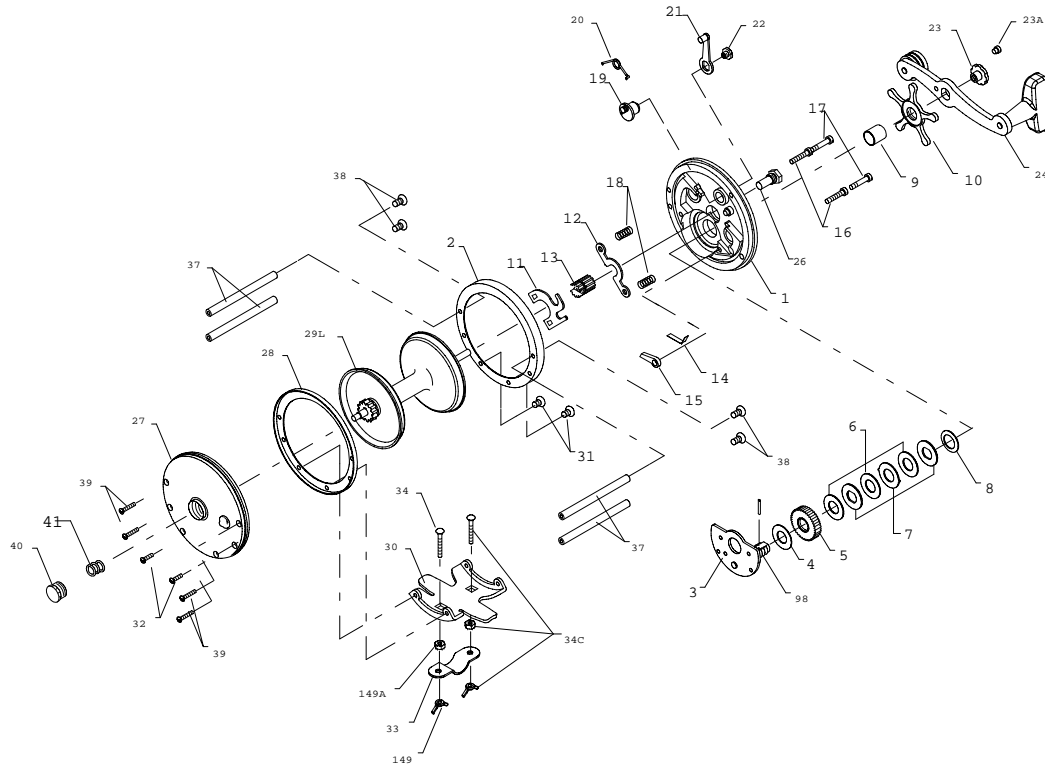




PARTS LIST FOR MODELS 100L AND 200L



KEY NO.	PART NO.	DESCRIPTION
7	007C060	Metal Washer Set
8	008 060	Tension Spring
9	009 060	Spacing Sleeve
10	010 060	Star Drag Wheel
11	011 155	Eccentric Jack
12	012 155	Pinion Yoke
13	013 200	Pinion
14	014 155	Dog Spring
15	015 200	Dog
16	016 060CH	Lower Bridge Screw
17	017 060CH	Upper Bridge Screw
18	018 060	Clutch Spring (2 req.)
19	019 200	Eccentric
20	020 155	Eccentric Spring
21	021 200	Eccentric Lever
22	022 099	Eccentric Screw
23	023 060	Handle Screw
23A	110 060	Handle Lock Screw
24	024N160	Handle
	024 155	Handle
26	026 155	R.S. Bearing
27	027 200	Left Side Plate
28	002 155	Inner Left Side Ring
29L	029L 100	Spool (100L)
	029L 200	Spool (200L)
30	030 049	Stand (100L)
	030 200	Stand (200L)
31	031 019	Stand Screw (R.S.) (2 req.)
32	032 016CH	Stand Screw (L.S.) (2 req.)
33	033 049	Rod Clamp (100L)
	033 113	Rod Clamp (200L)
34	034 049	Clamp Screw (100L) (2 req.)
	034 045	Clamp Screw (200L) (2 req.)
34C	034C049	Rod Clamp Screw w/Nuts (100L)
	034C045	Rod Clamp Screw w/Nuts (200L)
37	037 180	Frame Post (100L) (4 req.)
	037 067	Frame Post (200L) (4 req.)
38	038 007	R.S. Post Screw (4 req.)
39	039 005	L.S. Post Screw (4 req.)
40	040 060	L.S. Bearing
41	041 060	Bearing Spring L.S.
98	098 155	Gear Sleeve
149	152 200	Clamp Nut (100L) (2 req.)
	149 045	Wing Nut (200L) (2 req.)
149A	149 200	Hex Nut (2 req.)

KEY NO.	PART NO.	DESCRIPTION
1	001N100	Right Side Plate (100L)
	001 200	Right Side Plate (200L)
2	002 200	R.S. Ring
3	003 200	Bridge w/Sleeve
4	004 060	Fiber Washer
5	005 060	Main Gear
6	006 060	Drag Washer (3 req.)