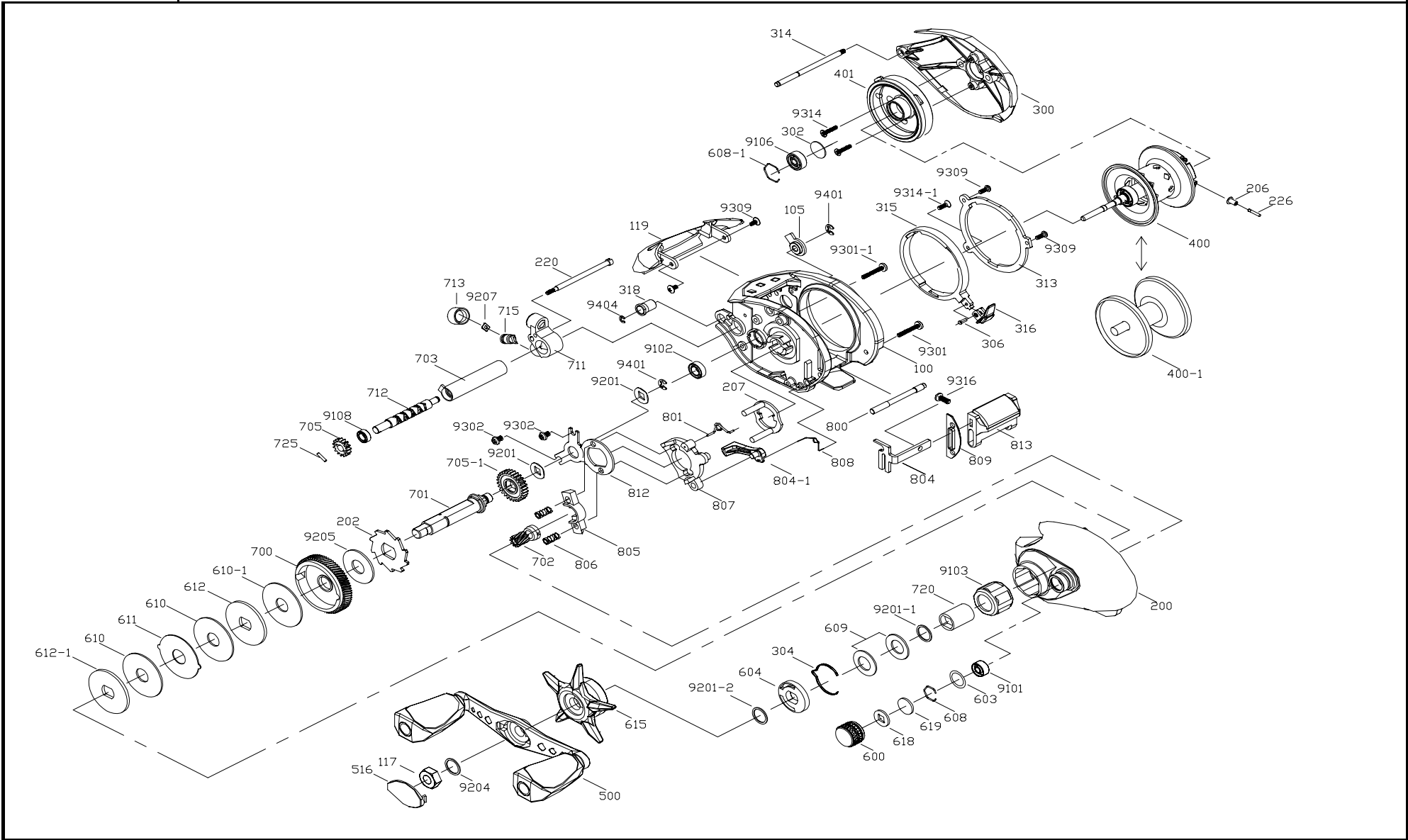




# Bait Casting

V - 200LX



## V - 200LX SPARE PARTS LIST

KEY	PARTS NO	PARTS NAME	LOT	KEY	PARTS NO	PARTS NAME	LOT
100	14100017-04004	MAIN BODY		701	14701005-03004	DRIVE GEAR SHAFT	
105	14105002-01002	WORM SHAFT BUSHING		702	14702009-03002	PINION GEAR	
117	11117005-03002	RETAINER NUT		703	14703004-01001	WORM SHAFT GUARD	
117	14117001-031	RETAINER NUT	3024	705	14705003-01002	TRANSMISSION GEAR	
119	14119002-01726	BODY COVER		705-1	14705004-01002	TRANSMISSION GEAR	
200	1420000804004	MAIN SIDE PLATE		711	1471100201003A	GUIDE SLIDE BASE ASSY.	
202	14202002-06002	RATCH		712	14712004-03001	WORM SHAFT	
206	14206002-01002	STOPPER CAP		713	14713002-04001	LINE GUIDE PAWL CAP	
207	14207001-01001	HOLDED PLATE		715	14715002-06001	LINE GUIDE PAWL	
220	14220002-06001	MIAN SIDE PLATE HOLD SCREW		720	14720002-06002	DRIVE GEAR SHAFT BUSHING	
226	14226001-03001	CONTROL FIXED PIN		725	14725001-06001	TRANSMISSION GEAR PIN	
300	14300005-0A102	VICE SIDE PLATE		800	14800002-06001	CLUTCH SHAFT	
302	14302001-1	BUSHING		801	14801004-06001	CLUTCH SPRING	
304	14304003-06001	CLICK PAWL		804	14804004-06001	CLUTCH SLIDER	
306	14306002-03001	CLICK PAWL SPRING PIN		804-1	14804006-02001	CLUTCH SLIDER	
313	14313002-06001	VICE SIDE PLATE FIXER		805	14805004-01002	PINION GEAR YOKE	
314	14314001-06001	VICE SIDE PLATE CONTROL PIN		806	14806002-06001	YOKE SPRING	
315	14315001-01003	VICE SIDE HOLDED PLATE		807	14807004-01001	YOKE BRAKED PLATE	
316	14316002-01003	FIXED PLATE BUTTON		808	14808004-06001	YOKE BRAKED PLATE SPRING	
318	14318001-03001	CONTROL PIN BUSHING		809	14809002-01003	CLUTCH BAR WASHER	
400	1440001004002	SPOOL ASSY.		812	14812004-06001	BRAKED PLATE HOLDER	
400-1	1440000904002	SPOOL ASSY.		813	14813001-07003	CLUTCH BAR CAP	
401	14401003-01001	SPOOL CLICK GEAR		9101	01030804-61	ONE WAY BEARING	
500	1450000404002	HANDLE ASSY.		9102	01050903-61	ONE WAY BEARING	
516	14516002-0A003	HANDLE NUT RETAINER		9103	01101612-62	ONE WAY BEARING	
600	14600003-04005A	CAST CONTROL CAP		9106	01031004-601	BALL BEARING	
603	14603002-07	O RING		9108	01040725-61	BALL BEARING	
604	14604002-02001	DRAG CLICK		9201	025.1x10.5x.2-6	WASHER	
608	14608002-06001	DRAG WASHER RETAINER		9201-1	028x10x0.5-6	WASHER	
608-1	14608001-06001	DRAG WASHER RETAINER		9201-2	028.1x12x0.5-0	WASHER	
609	11609003-06001	DRAG SPRING WASHER		9204	025.9x12x0.2-6	HANDEL NUT WASHER	
609	14609003-06001	DRAG SPRING WASHER	3030	9204	025.9x12x0.5-6	HANDEL NUT WASHER	3025
609-1	14609004-06001	DRAG SPRING WASHER	3030	9205	028.2x20x1-9	RATCHET WASHER	
610	11610004-006A	DRAG WASHER		9207	022x4.9x0.2-3	LINE GUIDE PAWL WASHER	
610-1	11610003-006	DRAG WASHER		9301	03112x8-617	MAIN SIDE PLATE SCREW	
611	11611005-061	EARED WASHER		9301-1	03112.6x10-617	MAIN SIDE PLATE SCREW	
612	11612007-06004	KEY WASHER		9302	03412.6x4-61	HOLD PLATE SCREW	
612-1	11612007-06001	KEY WASHER		9309	03412x4-61	HANGER SCREW	
615	14615004-04002A	STAR DARG WRENCH		9314	03212x8-617	CLICK GEAR SCREW	
618	14618002-07	SPACER		9314-1	03212x3.2-61	SCREW	
619	14619002-01001	WASHER		9316	03422.6x6.5-61	CLUTCH BAR SCREW	
700	14700006-03003	DRIVE GEAR		9401	12900001-06	E RETAINER FOR MAIN SHAFT	
701	14701005-03002	DRIVE GEAR SHAFT	3031	9404	11900002-06	E RETAINER FOR WORM SHAFT	