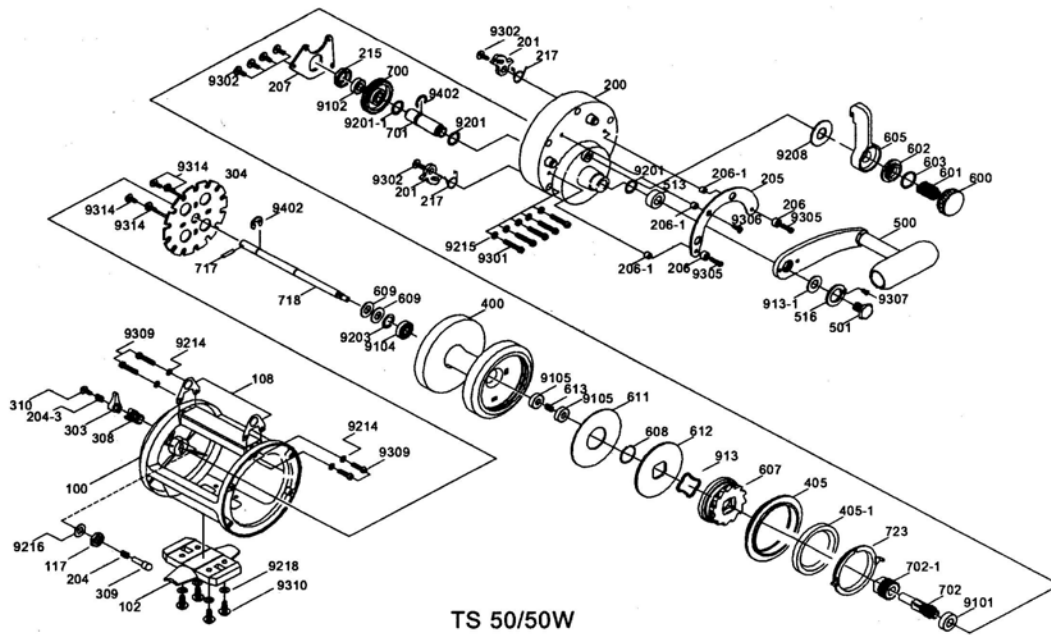




**MIKE'S REEL REPAIR**  
 #108 31060 Peardorville Road  
 Abbotsford, B.C., Canada V2T 6K5  
 Toll Free 1-888-404-1119



**TS50 SPARE PARTS LIST**

KEY NO.	PARTS NO.	PARTS NAMES	KEY NO.	PARTS NO.	PARTS NAMES
100	11100030-04005	MAIN BODY	611	11611011-067	DRAG WASHER
102	11102007-04001	BODY FOOT	612	11612011-061	KEY WASHER
108	11108004-0681	HANGER	613	11613005-16	COMPRESSION SPRING
117	11117004-13	CLICK PAWL LOCKNUT	700	11700017-06005	DRIVE GEAR
200	1120003804004	RIGHT SIDE PLATE ASSY.	701	11701018-06	DRIVE GEAR SHAFT
201	11201009-06001	ANTI-REVERSE PAWL	702	11702022-06003	PINION GEAR
204	11204002-06	COMPRESSION SPRING	702-1	11702023-06001	PINION GEAR
204-3	11204005-06002	COMPRESSION SPRING	717	11717003-06	STOPPER PIN
205	11205006-061	DECORATION PLATE	718	11718018-06001	MAIN SHAFT
206	11206001-03001	LEVER DRAG STOPPER CAP	723	11723001-01001	SILENT SPRING
206-1	11206002-03907	LEVER DRAG STOPPER CAP	913	11913001-05907	SPRING WASHER
207	11207014-04001	HOLD PLATE	913-1	11913002-06001	SPRING WASHER
215	11215007-03	HOLD PLATE BUSHING	9101	01102005-6	BALL BEARING
217	11217004-06001	ANTI-REVERSE PAWL SPRING	9102	01071304-6	BALL BEARING
303	11303009-04002	CLICK BUTTON	9104	01081906-6	BALL BEARING
304	11304007-06001	CLICK PAWL	9105	01081605-6	BALL BEARING
308	11308002-06002	CLICK TONGUE BUSHING	9201	0214x18x0.5-3	WASHER
309	11309001-261	CLICK PIN	9201-1	0214x18x0.7-3	WASHER
310	11310001-06002	CLICK PIN SCREW	9203	028x10.5x0.8-6	WASHER
400	11400037-04004	SPOOL	9208	0210.1x23.8x1-9	LEVER DRAG WASHER
405	11405015-11	SPOOL COVER	9214	023.9x7x1-7	WASHER
405-1	11405013-07001	WATER PROOF DRAG SEAL	9215	023.1x5.9x1-1	WASHER
500	11500017067A	HANDLE ARM ASSY.	9216	028.1x12x0.5-1	WASHER
501	11501009-26	HANDLE NUT	9218	024.6x8x0.2-6	WASHER
513	11513008-06	HANDLE COVER	9301	03113.0x18-61	RIGHT SIDE PLATE SCREW
516	11516005-06	HANDLE NUT HOLD PLATE	9302	03312.6x5-61	HOLD PLATE SCREW
600	11600013-03907	DRAG KNOB	9305	03112.6x10-61	SIDE PLATE SCREW
601	11601001-06	COMPRESSION SPRING	9306	03212.6x7.5-617	SIDE PLATE SCREW
602	11602001-05001	ADJUST BLOCK	9307	03212.6x5.5-61	HANDLE NUT SCREW
603	11603001-07	"O" RING	9309	03114.0x10-61	HANGER SCREW
605	11605011-04909	LEVER DRAG	9310	03614x10.5-61	BODY FOOT SCREW
607	11607011-06002	PINION GUARD	9314	03412.6x5.5-61	CLICK PAWL SCREW
608	11608003-06	DRAG WASHER RETAINER	9402	11900004-06	MAIN SHAFT "E" RETAINER
609	11609006-05907	MAIN SHAFT SPRING WASHER	9502	11901008-06001	"C" RETAINER