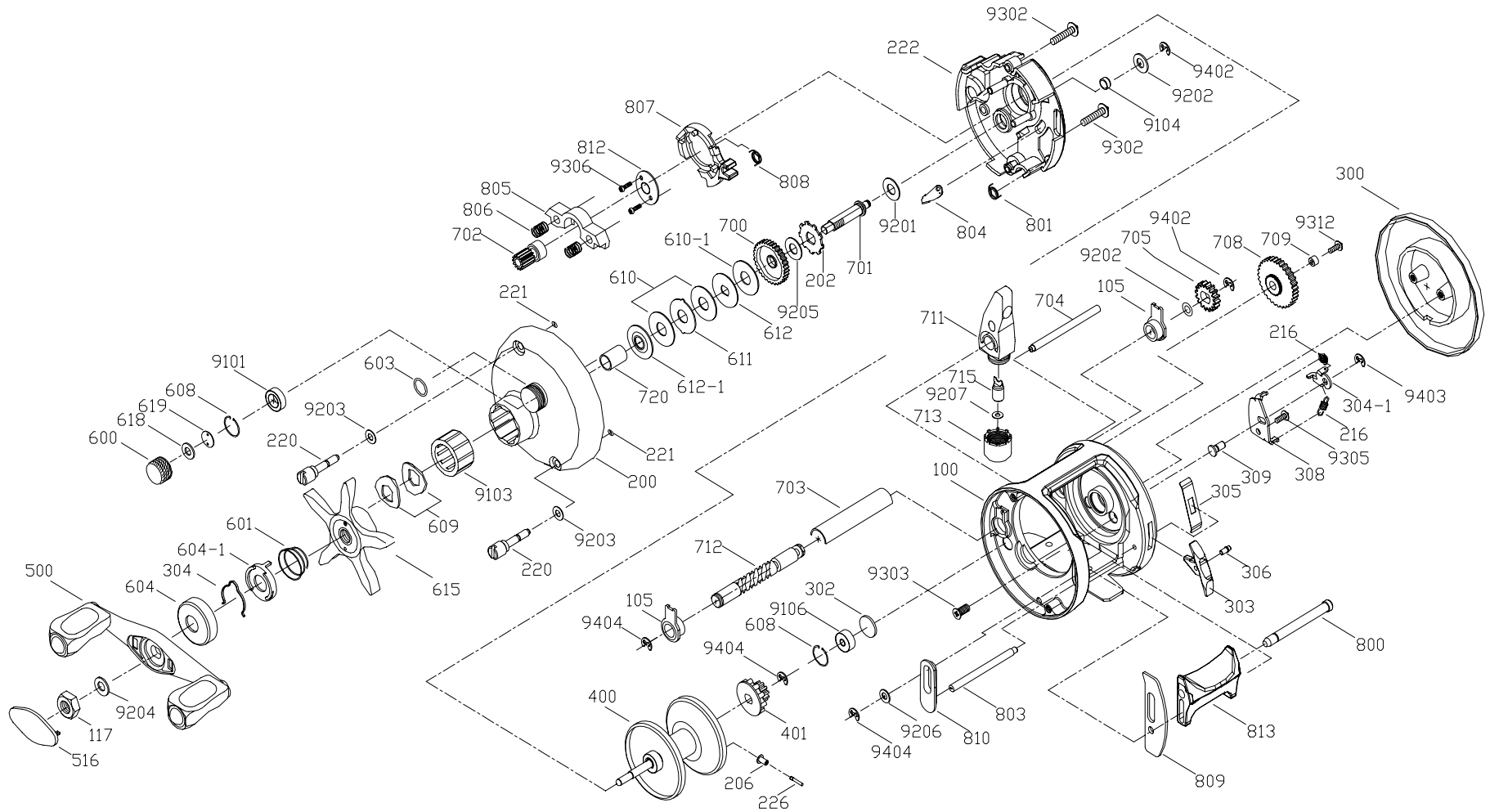




Bait Casting

S - 250LX



S - 250LX SPARE PARTS LIST

| KEY | PARTS NO | PARTS NAME | LOT | KEY | PARTS NO | PARTS NAME | LOT |
|-------|----------------|----------------------------|-----|------|------------------|---------------------------|-----|
| 100 | 1410002603A | MAIN BODY ASSY. | | 703 | 14703002-06001 | WORM SHAFT GUARD | |
| 105 | 14105001-0114 | WORM SHAFT BUSHING | | 704 | 14704002-16 | LINE GUIDE SUPPORT BAR | |
| 117 | 14117001-03 | CLICK BUTTON RETAINER NUT | | 705 | 14705002-06 | TRANSMISSION GEAR | |
| 200 | 1420000404005 | MAIN SIDE PLATE ASSY. | | 708 | 14708001-0114 | TRANSMISSION GEAR | |
| 202 | 14202001-06 | RATCH | | 709 | 14709002-03 | TRANSMISSION GEAR BUSHING | |
| 206 | 14206002-01002 | CONTROL PIN CAP | | 711 | 1471100111001 | GUIDE SLIDE BASE ASSY. | |
| 216 | 14216001-062 | ANTI-RE PAWL SPRING | | 712 | 1471200601 | WORM SHAFT | |
| 220 | 14220001-03907 | MIAN SIDE PLATE HOLD SCREW | | 713 | 14713001-01 | LINE GUIDE PAWL CAP | |
| 221 | 14221001-07 | "O"RING | | 715 | 11715003-06001C | LINE GUIDE PAWL | |
| 222 | 14222002-01001 | MAIN SIDE PLATE HOLDER | | 720 | 14720002-06001 | DRIVE GEAR SHAFT BUSHING | |
| 226 | 14226001-03001 | CONTROL PIN | | 800 | 14800001-06 | CLUTCH SHAFT | |
| 300 | 14300001-04912 | VICE SIDE PLATE | | 801 | 14801002-06001 | CLUTCH SPRING | |
| 302 | 14302001-03 | BUSHING | | 802 | 14802005-01001 | CLUTCH BAR | |
| 303 | 14303001-01 | CLICK BUTTON | | 803 | 14803002-06 | CLUTCH BAR SUPPORT | |
| 304 | 11304009-06001 | CLICK PAWL | | 804 | 14804002-06001 | CLUTCH SLIDER | |
| 304-1 | 14304001-06 | CLICK PAWL | | 805 | 14805002-0114 | PINION GEAR YOKE | |
| 305 | 14305001-06 | CLICK PAWL SPRING | | 806 | 14806001-06 | YOKE SPRING | |
| 306 | 14306001-03 | CLICK PAWL SPRING PIN | | 807 | 14807002-0114 | YOKE BRAKED PLATE | |
| 308 | 14308002-06001 | CLICK BUTTON RETAINER | | 808 | 14808002-06001 | YOKE BRAKED PLATE SPRING | |
| 309 | 14309001-03907 | CLICK PIN | | 809 | 14809001-01 | CLUTCH BAR WASHER | |
| 400 | 1440000204912C | SPOOL ASSY. | | 810 | 14810001-01001 | CLUTCH SHAFT BUSHING | |
| 401 | 14401001-0114 | CLICK GEAR | | 812 | 14812001-06 | BRAKED PLATE HOLDER | |
| 500 | 1450000204005A | HANDLE ASSY. | | 9101 | 01051003-61 | BALL BEARING | |
| 516 | 14516001-0A913 | HANDLE NUT RETAINER | | 9103 | 01101612-62 | ONE WAY BEARING | |
| 600 | 14600002-03907 | CAST CONTROL CAP | | 9104 | 01050825-61 | BALL BEARING | |
| 601 | 14601001-16 | COMPRESSION SPRING | | 9106 | 01031004-611 | BALL BEARING | |
| 603 | 14603001-01 | O RING | | 9201 | 025.1x10.5x.2-6 | WASHER | |
| 604 | 14604003-01001 | DRAG CLICK | | 9202 | 025x6.5x0.2-3 | WASHER | |
| 604-1 | 11604002-01001 | DRAG CLICK | | 9203 | 023x5x0.2-1 | WASHER | |
| 608 | 14608001-06001 | DRAG WASHER RETAINER | | 9204 | 025.9x12x0.2-6 | WASHER | |
| 609 | 11609003-06001 | DRAG SPRING WASHER | | 9205 | 0210x20x1-8 | WASHER | |
| 610 | 11610004-006A | DRAG WASHER | | 9206 | 023.5x6x0.5-3 | WASHER | |
| 610-1 | 11610003-006 | DRAG WASHER | | 9207 | 022x4.9x0.2-3 | WASHER | |
| 611 | 11611005-061 | EARED WASHER | | 9302 | 03412.3x10.5-617 | SCREW | |
| 612 | 11612007-06002 | KEY WASHER | | 9303 | 03212.6x6-61 | SCREW | |
| 612-1 | 14612001-06001 | KEY WASHER | | 9305 | 03412.6x4-61 | SCREW | |
| 615 | 11615008-01A | PLASTIC STAR DARG KNOB | | 9306 | 03122x5-61 | SCREW | |
| 618 | 14618001-07 | SPACER | | 9312 | 03412.6x9-617 | SCREW | |
| 619 | 14619001-03 | WASHER | | 9402 | 12900002-06 | E RETAINER | |
| 700 | 14700002-0321 | DRIVE GEAR | | 9403 | 14900001-06 | E RETAINER | |
| 701 | 14701003-03002 | DRIVE GEAR SHAFT | | 9404 | 12900001-06 | E RETAINER | |
| 702 | 1470200103004 | PINION GEAR ASSY. | | | | | |