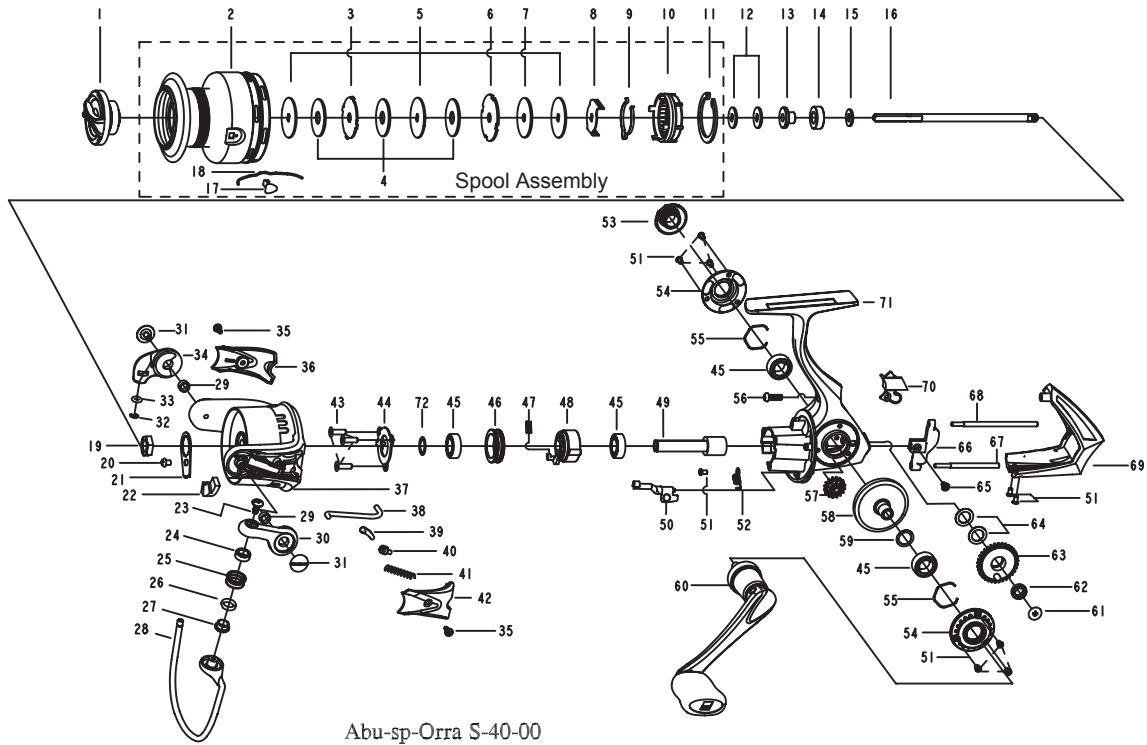




# ORRA S 40



## PARTS LIST OF ORRA S 40

ITEM#	DESCRIPTION	ORRA S 40	ITEM#	DESCRIPTION	ORRA S 40
1	Drag Knob Assembly	1252686	35	Screw	1125962
	Spool Assembly	1253707	36	Bail Holder Cover	1253714
	Spare Spool Assembly	1253708	37	Rotor	1253715
2	Spool	1253709	38	Trip Bar	1253716
2	Spare Spool	1253710	39	Trip Linkage	1252713
3	Eared washer	1126337	40	Trip Bushing	1126272
4	Felt washer	1252751	41	Trip Spring	1253696
5	Keyed washer	1126304	42	Bail Arm Cover	1253717
6	Spool Washer	1126307	43	Screw	1126326
7	Carbon Washer	1126305	44	Pinion Cover	1252715
8	Clicker holder	1252692	45	Bearing 7X13X4	1252717
9	Spool Clicker	1252693	46	Bearing Holder	1252718
10	Spool Bottom	1252695	47	Clutch Spring	1252716
11	Retaining Clip	1252697	48	Clutch Assembly	1252719
12	Spool shim thick T=0.5	1178953	49	Pinion	1252720
12	Spool shim thin T=0.3	1178954	50	Clutch Switch	1252721
13	Mainshaft sleeve	1252698	51	Screw	1252723
14	Bearing 6X12X4	1252699	52	Clutch Switch Spring	1252722
15	Mainshaft washer	1252700	53	Dust Cap	1252738
16	Mainshaft	1253711	54	Body Trim	1252727
17	Line clip	1252739	55	C-Clip	1252726
18	Line clip spring	1252740	56	Screw	1085342
19	Rotor Nut	1085273	57	Reduction Gear	1252732
20	Rotor Set Screw	1126258	58	Drive Gear	1252725
21	Rotor Set Plate	1252702	59	Shim	1085287
22	Balance Weight	1253712	60	Handle Assembly	1253719
23	Line Roller Screw	1126261	61	Screw	1252729
24	Bearing 5X8X2.5	1112125	62	Bushing	1108938
25	Line Roller	1252705	63	Oscillation Gear	1253720
26	Pom bushing	1252756	64	Washer	1253702
27	Brass bushing	1252755	65	Screw	1126275
28	Bail Assembly	1253713	66	Oscillation Slider	1253721
29	Bushing	1188261	67	Oscillation Guide	1252733
30	Bail Arm	1252704	68	Oscillation Guide	1253722
31	Bail Arm Screw	1126379	69	Body Cover	1253723
32	E-clip	1252707	70	Oscillation Cover	1253718
33	O-ring	1252708	71	Gearbox	1253724
34	Bail Holder	1252709	72	Rotor Washer	1114764