

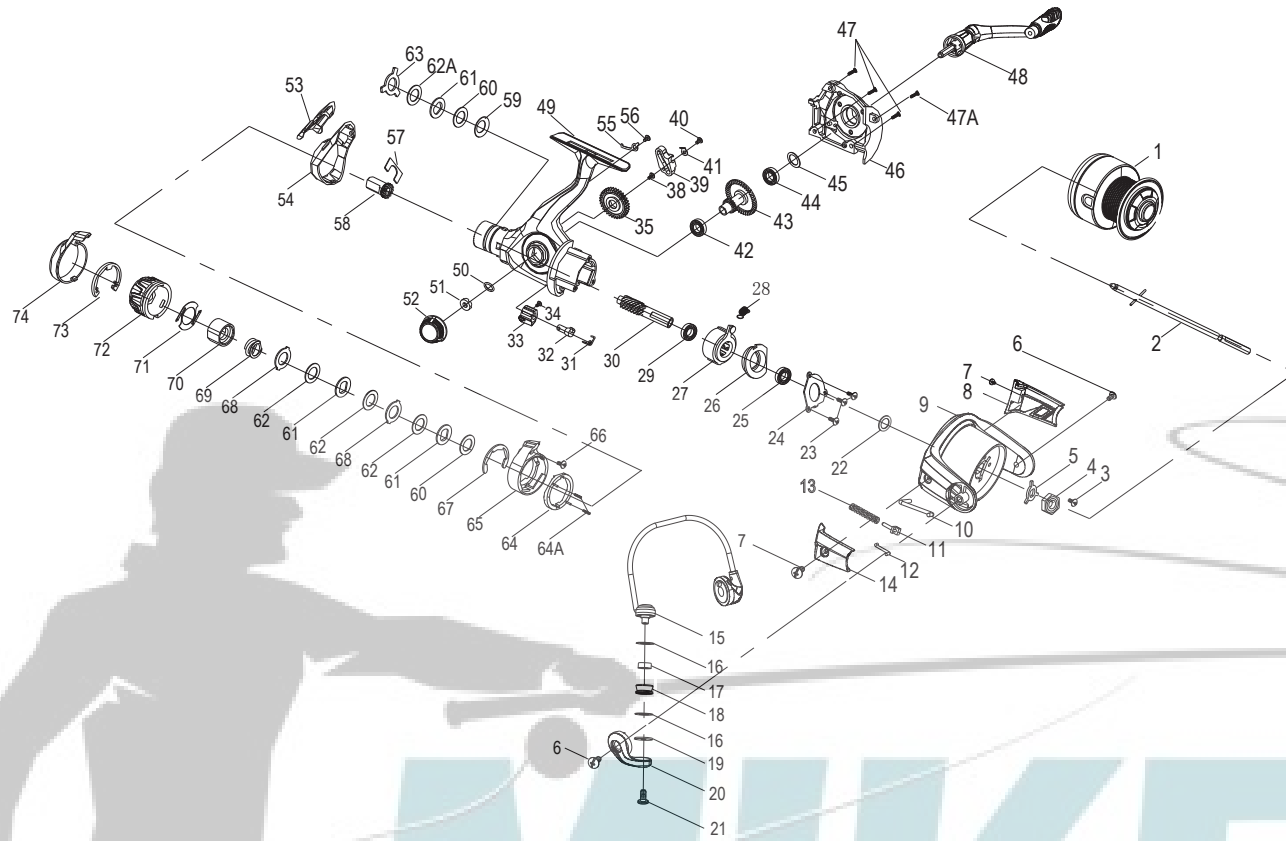
# MITCHELL®

# AVOCET® IV

## Model

AVRZ-2000R

AVRZ-4000R



NO	PARTS DESCRIPTION	AVRZ-2000R	AVRZ-4000R
1	SPOOL ASSY (including drag knob)	1367173	1367178
2	MAIN SHAFT ASSY	1288032	1315833
3	HEX NUT RETAINER SCREW	1276823	1276823
4	ROTOR NUT	1276824	1276824
5	ROTOR RETAINER PLATE	1276825	1276825
6	ROTOR WEIGHT SCREW	1276826	1276826
7	BAIL ARM COVER SCREW	1276827	1276827
8	ROTOR WEIGHT COVER	1276830	1276832
9	ROTOR ASSY	1347569	1347594
10	BAIL TRIP LEVER	1276848	1276852
11	BAIL ARM SPRING GUIDE	1276854	1276854
12	BAIL ARM SPRING SHAFT	1276856	1276856
13	BAIL ARM SPRING	1276858	1276859
14	ROTOR ARM COVER	1276862	1276864
15	BAIL WIRE ASSY	1347570	1347595
16	ROLLER WASHER (TEFLON)	1276876	1276876
17	ROLLER BUSHING	1277325	1277325
18	LINE ROLLER	1276877	1276877
19	ROLLER METAL WASHER	1276878	1276878

NO	PARTS DESCRIPTION	AVRZ-2000R	AVRZ-4000R
20	BAIL ARM	1347553	1347553
21	ROLLER SCREW	1276884	1276884
22	ONE WAY CLUTCH WASHER	1276885	1276885
23	ONE WAY CLUTCH COVER SCREW	1276886	1276886
24	CLUTCH BB COVER	1347554	1347554
25	PINION UP BALL BEARING	1276888	1276888
26	ONE WAY CLUTCH SUPPORT	1276890	1276890
27	ONE WAY CLUTCH ASSY (including sleeve)	1276892	1276892
28	A/R PULLING SPRING	1276893	1276893
29	PINION DOWN BALL BEARING	1276894	1276894
30	PINION GEAR	1276895	1276896
31	A/R SPRING	1276897	1276897
32	A/R SHAFT	1276898	1276898
33	A/R SWITCH	1276899	1276899
34	A/R SWITCH SCREW	1276900	1276900
35	OSCILLATION GEAR	1276901	1276902
38	OSCILLATION GEAR SCREW	1276905	1276905
39	SLIDER	1288034	1315834
40	SLIDER SCREW	1288037	1288037

NO	PARTS DESCRIPTION	AVRZ-2000R	AVRZ-4000R
41	SLIDER CLIP	1288038	1288038
42	MAIN BODY BUSHING	1277342	1277342
43	MAIN GEAR	1276911	1276912
44	SIDE COVER BALL BEARING	1276913	1276913
45	MAIN GEAR WASHER	1276914	1276914
46	SIDE COVER (including trim)	1367174	1367189
47	SIDE COVER SCREW	1276915	1276915
47A	SIDE COVER SCREW1	1288043	NA
48	HANDLE ASSY	1347572	1347597
49	MAIN BODY (including trim)	1367175	1367190
50	O RING	1277376	1277376
51	HANDLE RETRIEVE WASHER	1277377	1277377
52	HANDLE CAP	1347539	1347539
53	SMALL REAR COVER	1367176	1367191
54	REAR COVER	1367177	1367192
55	RAPID DRAG CLICKER	1288054	1288054
56	RAPID DRAG CLICKER SCREW	1288055	1288055
57	GATE WASHER	1288056	1288056
58	DRAG SLEEVE	1288057	1288057
59	RAPID DRAG SPRING WASHER	1288058	1288058
60	RAPID DRAG WASHER (teflon)	1288059	1288059
61	METAL WASHER	1288060	1288060
62	DRAG WASHER (felt)	1288061	1288061
62A	RAPID DRAG WASHER (carbon)	1293121	1293121
63	DRAG SQUARED WASHER	1288062	1288062
64	RAPID DRAG RAMP	1288063	1288063
64A	RAPID DRAG RAMP SPRING	1288064	1288064
65	RAPID DRAG KNOB	1288065	1288065
66	RAPID DRAG COVER SCREW	1288066	1288066
67	RAPID DRAG CLIP	1288067	1288067
68	REAR DRAG SQUARED WASHER	1288068	1288068
69	DRAG SPRING	1288069	1288069
70	REAR DRAG NUT	1288070	1288070
71	REAR DRAG CLICKER	1288071	1288071
72	REAR DRAG KNOB	1288072	1288072
73	REAR DRAG LOCK RING	1288073	1288073
74	RAPID DRAG COVER	1288074	1288074