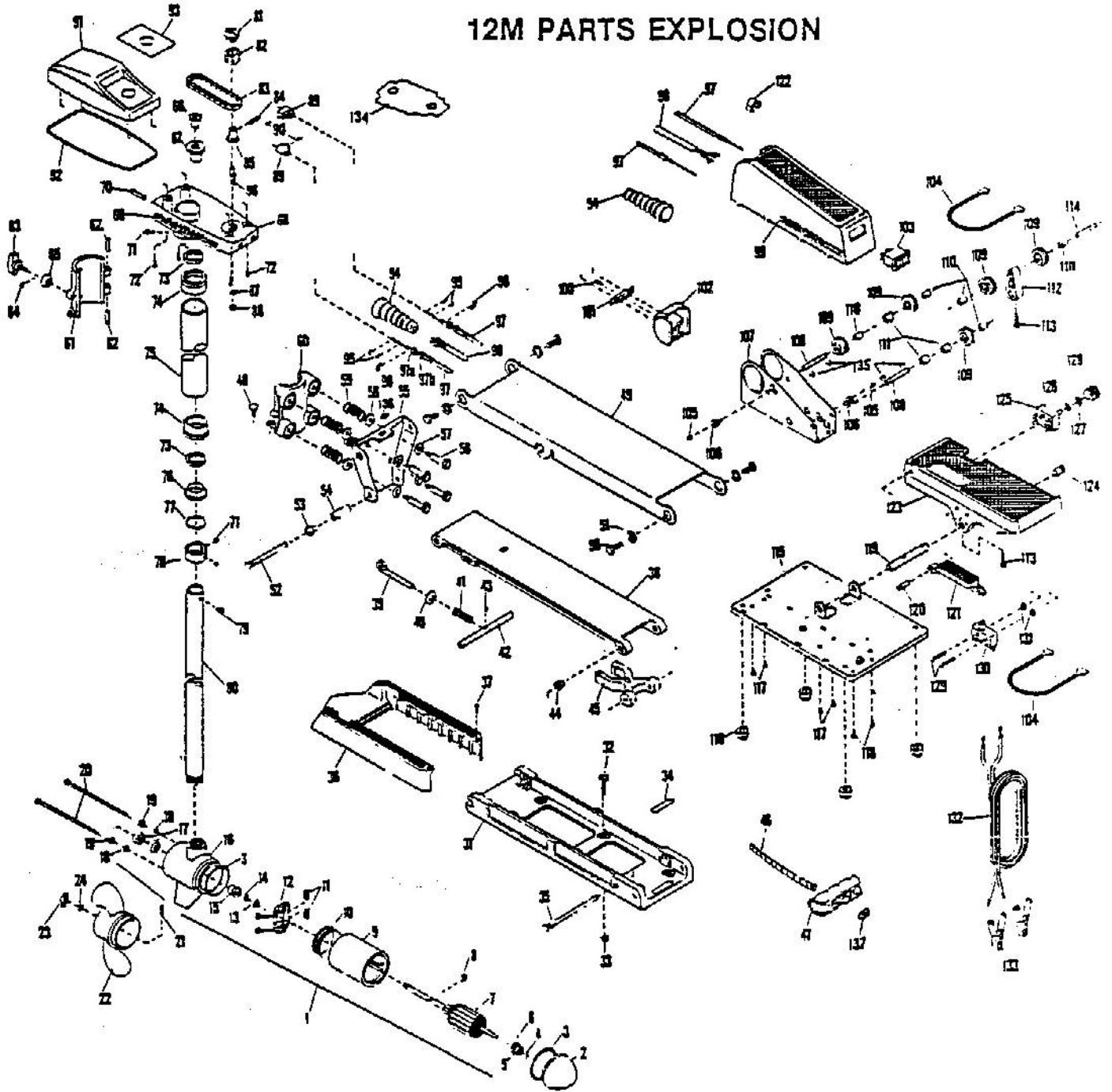


### 12M PARTS EXPLOSION



# 12M PARTS GUIDE

Item No.	Part No.	Description	Item No.	Part No.	Description
1	203-1060	Motor Assembly (Complete)	74	226-6200	Bearing Race (2 required)
2	401-020	Front End Bell w/ 401-600 Bearing	75	227-2000	Tube (18")
3	401-460	O-Ring (2 required)	76	226-6110	Bearing Cone
4	401-050	Thrust Disc.	77	226-4600	O-Ring
5	401-600	Bearing	78	226-1501	Collar
6	405-301	Bearing Retainer	79	226-3410	Flat Head Screw
7	403-204	Armature	80	215-2002	Tube (36")
8	401-300	E-Ring	81	226-0140	Pointer
9	403-251	Center Section w/ Magnets	82	226-2620	Pointer Cup
10	403-241	Speed Coils	83	225-0800	Roller Chain
11	401-080	Brush Spring (2 required)	84	226-2630	Pointer Pin
12	401-401	Brush Plate Assembly	85	226-2212	Idler Sprocket
13	401-170	Steel Washer	86	226-2600	Adjusting Pin
14	401-171	Thrust Washer	87	226-1700	Lock Washer
15	403-031	Rear End Bell	88	225-3100	Hex Nut
16	401-000	Shoulder Bushing	89	225-3280	Cable Connector—Stop (2 required)
17	401-461	Seal (2 required)	90	225-2610	Spring Pin (2 required)
18	401-462	Thru Bolt O-Ring (2 required)	91	226-0230	Cover
19	401-172	Thru Bolt Washer (2 required)	92	226-6910	Gasket—Cover
20	403-351	Thru Bolt (2 required)	93	223-5660	Decal—Cover 12M
21	208-2600	Shear Pin	94	225-5130	Cable Boot (2 required)
22	203-1151	Propeller	95	225-3010	E-Ring (4 required)
23	203-3110	Propeller Nut	96	202-3000	E-Ring (2 required)
24	201-1720	Propeller Washer	97	227-7400	Cable Housing Assembly (2 required)
31	225-1912	Bow Plate		223-7400	Cable Core Assembly—Left (short)
32	215-3500	Mounting Bolt (4 required)		225-7400	Cable Core Assembly—Right (long)
33	215-3100	Mounting Nut (4 required)	98	215-1200	Electrical Cable
34	223-5120	Base Pad	99	223-6400	Command Post Cover
35	223-0500	Hinge Pin	100	223-1310	Lock Bar Screw
36	223-3900	Motor Rest	101	223-3610	Lock Bar
37	223-3400	Screw (2 required)	102	223-3300	Pivot Drum (Complete)
38	225-4312	Lower Arm (Complete w/ items 38 thru 43 and items 46 and 47)	103	225-4030	Constant/Momentary Switch
39	215-3600	Eye Shaft	104	225-0310	Connecting Wire—White
40	215-1700	Washer		225-0320	Connecting Wire—Red
41	215-2700	Spring	105	225-3430	Cable End Set Screw (2 required)
42	223-3600	Lock Bar	106	225-3230	Cable End (2 required)
43	215-2610	Spring Pin	107	223-6500	Pulley Housing
44	223-6000	Bearing—Nyliner (2 required)	108	223-0530	Pin (2 required)
45	223-3822	Tube Lock	108	223-2300	Pulley (5 required)
46	225-1600	Rope	110	223-0000	Pulley Bearing (5 required)
47	215-0402	Pull Grip	111	223-1540	Pulley Spacer (3 required)
48	223-6700	Rope Plug	112	223-3312	Link
49	229-4201	Upper Arm	113	223-3520	Drive Screw (2 required)
50	229-3500	Shoulder Bushing (4 required)	114	223-0540	Pin
51	229-3510	Bolt (4 required)	115	225-4522	Foot Pedal Base
52	223-0510	Hinge Pin	116	225-5120	Rubber Bumper (4 required)
53	223-6020	Bearing (2 required)	117	223-2100	Screw (4 required)
54	223-1570	Sleeve	118	207-2140	Screw (2 required)
55	223-1901	Hinge Bracket	119	223-0552	Drive Pin
56	223-3550	Shoulder Bolt (4 required)	120	223-0570	Push Button Pin
57	215-1720	Washer (4 required)	121	223-3700	Push Button
58	215-1730	Cup Washer (4 required)	122	225-3290	Cable Clip (5 required)
59	223-2700	Spring (4 required)	123	225-4442	Foot Pedal
60	223-1802	Hinge Base	124	223-0560	Pin
61	223-1812	Hinge Cover	125	206-4000	4-Speed Switch
62	223-0580	Hinge Cover Pin (2 required)	126	202-1700	Lock Washer
63	223-0100	Knob	127	202-3100	Switch Nut
64	215-3000	E-Ring	128	226-0100	Speed Control Knob
65	223-1530	Spacer	129	223-2120	Switch Mounting Screw (2 required)
66	226-2200	Sprocket	130	226-4020	Switch (On-Off)
67	226-6210	Top Bearing Race	131	223-3100	Nut (2 required)
68	226-2522	Control Box	132	225-0610	Lead Wire (Includes Battery Clips and Terminals)
69	223-5500	Decal—Control Box (2 required)	133	201-0700	Battery Clips (2 required)
70	201-5400	Wire Insulator (6 required)	134	225-6310	Shield—Wire
71	226-3400	Set Screw (4 required)	135	201-3000	E-Ring (4 required)
72	201-2100	Cover Screw (4 required)	136	223-2350	Rope Eyelet
73	226-6000	Ball Bearing (2 required)	137	215-1700	Washer—Rope

\*Note: Prices Subject to Change Without Notice.