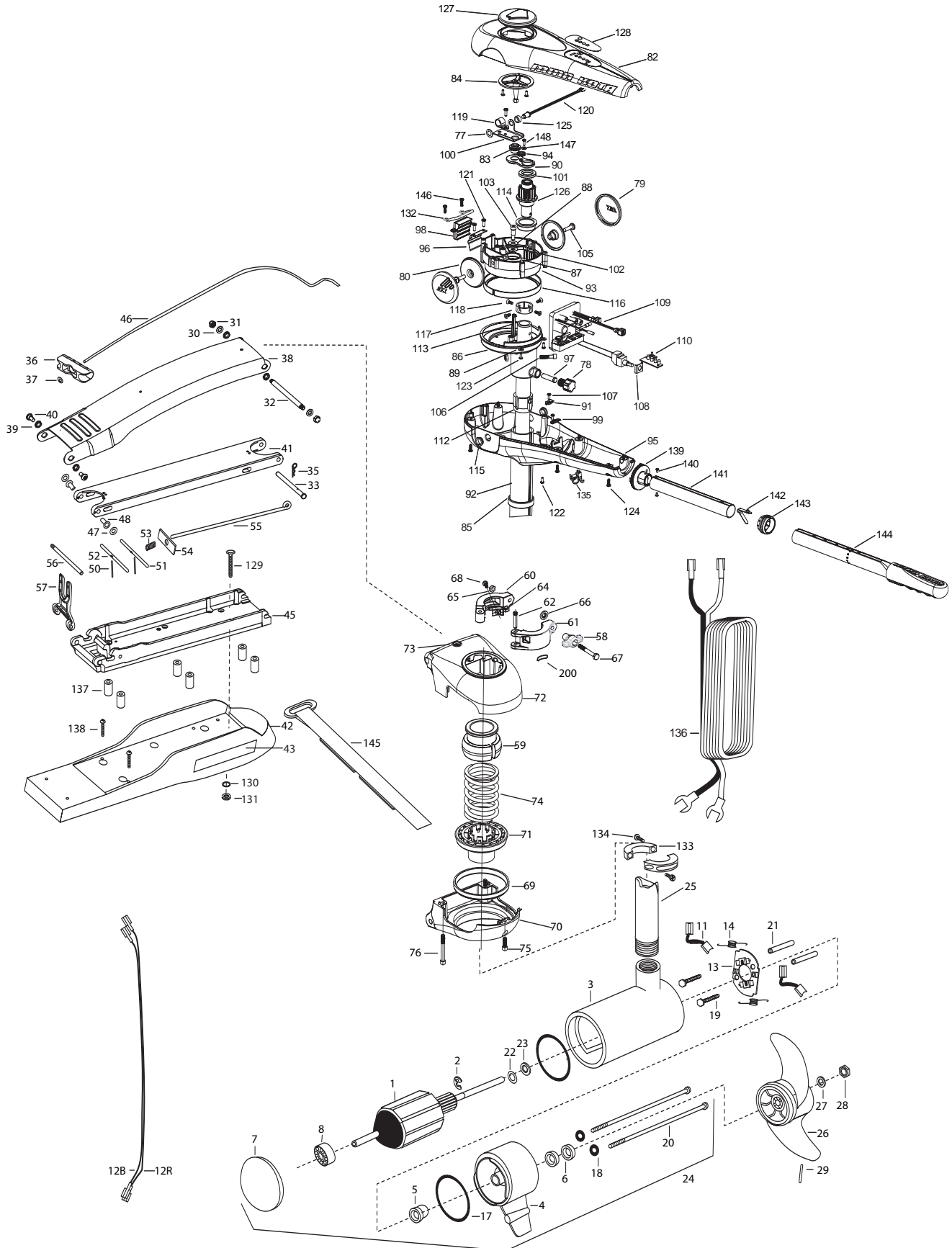


**MAXXUM 80/H -3X STEERING**  
**BOWGUARD 360° MOUNT**  
**80 LBS THRUST**  
**24 VOLT 56 AMPS**  
**62" SHAFT**

for use with "WWAF" serial numbers  
3-year warranty from the date of purchase

For Parts and Service  
Call 1-888-404-1119  
[www.mikesreelrepair.com](http://www.mikesreelrepair.com)



1	2-100-213	ARMATURE ASSEMBLY 24V 4"	54	2262703	SPRING STOP	103	2073400	SCREW 5/16" X 1/2" SHOULDER
2	788-040	RETAINING RING	55	2153604	EYE SHAFT-2LOCKBAR, LONG-PL	105	2073408	SCREW [2 EA.]
3	2-200-160	CENTER HOUSING ASSEMBLY 4.0 TXT	56	2260506	HINGE-PIN HEADLESS ZINC	106	2073410	SCREW
4	2-300-160	BRUSH END HOUSING ASSEMBLY	57	2293811	YOKE,MAX MNT-POLYPROPYLENE	107	2073414	SCREW 6-32 PPH
5	144-017	BEARING- FLANGE (SERVICE ONLY)	58	2070120	KNOB CLAMP COLLAR	108	2074000	POT CLIP
6	880-025	SEAL [2.EA]	59	2071541	SPRING SLEEVE UPPER	109	2074061	CONTROL BOARD ASSEMBLY
7	421-260	PLAIN END HOUSING ASSEMBLY	■	2991555	COLLAR/CLAMP ASSEMBLY	110	2074071	BATTERY METER
8	140-010	BALL BEARING	60	2071550	COLLAR CLAMP "A"	112	2075100	TENSION SLEEVE
11	186-094	BRUSH [2.EA]	61	2071555	COLLAR CLAMP "B"	113	2076701	KEY - TUBE
12B	640-021	LEADWIRE-BLACK 10 AWG 61 XLP	62	2072621	PIN KNURLED	114	2077305	BEARING UPPER
12R	640-126	LEADWIRE-RED 10 AWG 62 1/2	64	2072821	ORIENTATION BLOCK	115	2077316	BUSHING [2 EA.]
13	738-004	BRUSH PLATE 4"	65	2073100	NUT - NYLOC	116	2077320	BEARING - GEAR CARRIER
14	975-041	SPRING- TORSION [2.EA]	66	2071718	WASHER NYLON	117	2071560	COLLAR TUBE
17	701-009	O-RING —THRU BOLT [2.EA]	67	2073413	SCREW 1/4 - 28"HHC	118	2223468	SCREW 8-32 [4 EA.]
18	701-043	O-RING [2.EA]	68	2223454	SCREW 10-32 SS	119	2263201	CLAMP WIRE HARNESS
19	830-027	SCREW -SELF THREAD 10-32X2 [2.EA]	■	2991763	BOWGUARD ASSEMBLY	120	2264015	LIGHT INDICATOR
20	830-094	THRU BOLT 12-24X10.31 [2.EA]	■	2991770	BRACKET/BEARING ASSEMBLY	121	2372100	SCREW 8-18 SS [2 EA.]
21	973-025	SPACER- BRUSH PLATE [2.EA]	*69	2261531	BEARING	122	2073416	SCREW 8-32 SS SHCS [2 EA.]
22	990-051	WASHER- STEEL	*70	2262050	BRACKET BASE BOTTOM	123	2332103	SCREW 6-20 SS [5 EA.]
23	990-052	WASHER- NYLATRON	71	2261535	SPRING SLEEVE	124	2012100	SCREW 8-18 X 5/8" [6 EA.]
24	2316249	MOTOR ASSEMBLY 24V 4" VARS TXT006	72	2772319	BRACKET BASE TOP W/ EYELET	125	2071525	SPACER-INDICATOR LIGHT
25	2072007	TUBE - COMPOSITE 3:1 62"	73	2262315	EYELET ROPE	126	2992205	PINION - MAIN
■	1378132	PROPELLER KIT	74	2262712	SPRING BOWGUARD	127	2998600	INDICATOR ASSEMBLY
26	2331160	PROPELLER W/WEDGE 2	75	2263423	SCREW 5/16-18 X 1" SHCS ZINC	128	2075625	DECAL COVER MAX 80 W/3X
27	2091701	WASHER-5/16 SS	76	2263425	SCREW 5/16-18 X 2-1/2" SHCS [2 EA.]	■	2994830	BAG ASSEMBLY - MAXXUM VECTOR
28	2093101	NUT-PROP NYLOC	77	2013100	SPEED NUT	*129	2263431	1/4-20X3.5" PPH [6.EA]
29	2262658	PIN-DRIVE	78	2070105	KNOB-TENSION SLEEVE	*130	2261713	WASHER 1/4 FLAT SS [6.EA]
30	2261722	WASHER FLAT [2.EA]	79	2070110	PIVOT KNOB [2 EA.]	*131	2263103	NUT 1/4-20 NYLOC-JAM SS [6.EA]
31	2223100	NUT- TENSION 5/16-18 SS [2. EA]	80	2070117	COVER-PIVOT KNOB [2 EA.]	132	2072815	BRACKET-TILT STOP
32	2262605	PIN- BWGRD UPPER THREADED	82	2070201	COVER 3:1	133	2261622	COLLAR HALF [2 EA.]
33	2262607	CLEVIS PIN ZP MAXXUM BWGRD	83	2070800	COUPLER SOCKET	134	2263453	SCREW 1/4-20 X 1" [2 EA.]
35	2260801	SPRING CLIP	84	2070810	COUPLER DRIVE	135	2052900	STRAIN RELIEF
36	2150400	PULL-GRIP	85	2071502	LOWER COLLAR SUPPORT	136	2090650	LEADWIRE
37	2151700	WASHER-EYE SHAFT(.562 OD)	86	2071510	YOKE-GEAR CARRIER	■	2994832	BAG ASSEMBLY-MAXXUM VECTOR
■	2991842	MOUNT, BOW ASSEMBLY	87	2071710	WASHER NYLATRON [2 EA.]	*137	2261505	SPACER, MOTOR REST [6.EA]
38	2264246	ARM-UPPER FW, LONG	88	2071712	WASHER SS	*138	2263434	SCREW, 8-18 X 1" PPH SS [2.EA]
39	2293501	BUSHING, STAINLESS STEEL [4.EA]	89	2071714	WASHER FLAT #6 [2 EA.]	139	2990404	PIVOT HANDLE ASSEMBLY
40	2263500	BOLT- SHOULDER (MAXXUM) [2.EA]	90	2071900	IDLER PLATE	140	2072102	SCREW #6 X 1/4" [2 EA.]
41	2994317	ARM-LOWER ASSEMBLY, LONG, FW, EXT	91	2071905	BRACKET- SENSOR SWITCH	141	2070425	HANDLE TUBE
42	2999265	MOTOR REST LONG MAXXUM	92	2072082	OUTER TUBE 3:1 62"	142	2070411	LATCH-BUTTON
43	2265514	DECAL-MAXXUM, MOTOR REST [2.EA]	93	2072210	GEAR CARRIER	143	2070010	BEARING
44	2261505	SPACER, MOTOR REST [6.EA]	94	2072215	GEAR- IDLER	144	2990930A	HANDLE ASSEMBLY-EXT.
45	2993986	BOWPLATE, LONG FW-MACH/INSERT	95	2072501	CONTROL BOX	145	2263804	STRAP-HOLD DOWN
46	2251601	ROPE (40"), MAXXUM MOUNT	96	2072705	SPRING DETENT	146	2332101	SCREW #8-32 X 1/2" SS [2 EA.]
47	2261708	WASHER-3/8X1/2X.010" SS [2.EA]	97	2072710	SPRING TENSION SLEEVE	■	2994841	BAG ASSEMBLY, STABILIZER STRAP
48	2236000	BEARING NYLINER-[2.EA]	98	2072810	DETENT BLOCK-TILT	147	2071720	#4 WASHER SS
50	2152512	SPRING-PIN LOCKBAR [2.EA]	99	2072811	DETENT BLOCK-SWITCH	148	2373440	#4 SCREW SS
51	2233620	LOCK BAR- BOW MOUNT	100	2072900	RETAINER COUPLER	200	2075120	URETHANE PAD
52	2233622	LOCK BAR, REAR - ZINC	101	2073000	RING PRELOAD			
53	2152700	SPRING-LOCKBAR CAD, PLTD	102	2073100	HEX NUT - NYLOC [3 EA.]			

For Parts and Service  
Call 1-888-404-1119  
www.mikesreelrepair.com

