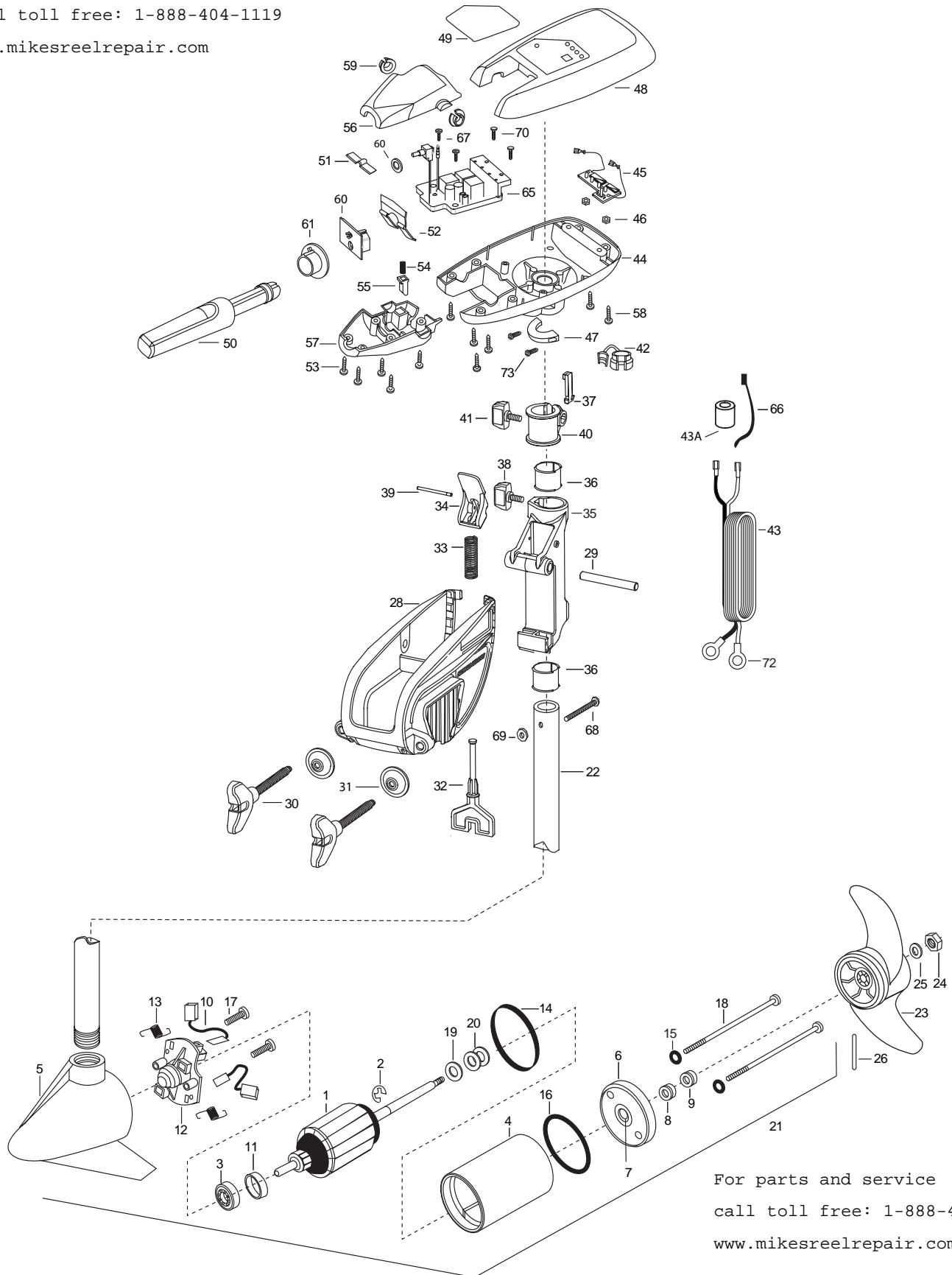


**MAXXUM 50T**  
**50 LBS. THRUST**  
**12 VOLT 42 AMPS**  
**36" SHAFT**

for use with "AH" serial numbers  
3-year warranty from the date of purchase

For parts and service  
call toll free: 1-888-404-1119  
www.mikesreelrepair.com



For parts and service  
call toll free: 1-888-404-1119  
www.mikesreelrepair.com

1 2-100-115 ARMATURE ASSEMBLY 12V F/W  
 2 788-015 RETAINING RING  
 3 140-010 BEARING -BALL  
 4 431-101 HOUSING ASSEMBLY CENTER 3.62  
 5 421-065 HOUSING BRUSH END ASSEMBLY 3.62 TXT  
 6 2-400-101 PLAIN END HOUSING ASSEMBLY  
 7 144-049 FLANGE BEARING (SERVICE ONLY)  
 8 880-003 SEAL  
 9 880-006 SEAL W/SHIELD  
 10 188-036 BRUSH ASSEMBLY  
 11 725-050 PAPER TUBE- BRUSH RETENTION  
 12 738-036 BRUSH PLATE W/HOLDER  
 13 975-040 SPRING -TORSION [2.EA]  
 14 337-036 GASKET  
 15 701-008 O-RING -THRU BOLT [2.EA]  
 16 701-081 O-RING  
 17 830-007 SCREW 8-32X1 [2.EA]  
 18 830-042 THRU BOLT 10-32X8.83 (2 EA)  
 19 990-067 WASHER -STEEL THRUST  
 20 990-070 WASHER -NYLATRON [2.EA]  
 21 2097094 MOTOR ASSEMBLY -12V 3.625 F/W VARS TXT  
 22 2032052 TUBE (COMPOSITE) 36"  
 ■ 1378131 PROPELLER KIT  
 23 2091160 PROPELLER- WEEDLESS WEDGE 2  
 24 2151726 WASHER- 5/16 STD SS  
 25 2053101 NUT-PROP NYLOC 5/16 SS  
 26 2092600 PIN-DRIVE SS  
 ■ 2771818 BRACKET & HINGE ASSEMBLY (INCLUDES- 28—39)  
 ■ 2771910 BRACKET ASSEMBLY (INCLUDES- 28,30,31)  
 \*28 2061910 BRACKET- PLASTIC  
 29 2060510 PIN-HINGE  
 ■ 2881300 SCREW-CLAMP, WASHER, RETAINER KIT [2.EA]  
 \*30 2061300 SCREW-CLAMP [2.EA]  
 \*31 2011710 WASHER-CLAMP SCREW [2.EA]  
 32 2063605 T-BAR, PLASTIC  
 33 2062706 SPRING- (T-BAR)  
 34 2067200 LEVER-TILT (RED)  
 35 2061810 HINGE-PLASTIC  
 36 2037301 BUSHING-HINGE [2.EA]

37 2062800 TENSION BLOCK-SNAP IN  
 38 2011385 SCREW, TENSION/KNOB  
 39 2060515 PIN, TILT LEVER  
 40 2061520 COLLAR-DEPTH  
 41 2011365 SCREW-COLLAR/NEW  
 42 2052900 STRAIN RELIEF C CORD/SP.C  
 43 2090600 LEADWIRE (10 GA) RINGS  
 43A 2307310 BEAD - FERRITE (CE MODELS ONLY)  
 44 2062592 CONTROL BOX,FW, .725 BORE,  
 45 2074070 BATTERY GAUGE-12 VOLTS  
 46 2303120 SPEED NUT [2.EA]  
 47 2061515 COLLAR-CTRL BOX (FRS-WTR)  
 48 2990294 CTRL BOX CVR/DECAL ASSEMBLY  
 49 2065667 DECAL-COVER MAX 50/T  
 50 2990914 HANDLE ASSEMBLY W/O U-JOINT  
 51 2302742 SPRING-DETENT (OFF) SS  
 52 2302743 SPRING-DETENT (HANDLE-TILT)  
 53 2303412 SCREW-6-20 X 5/8 SELF TAP [6.EA]  
 54 2302745 SPRING-RELEASE BUTTON SS  
 55 2303720 RELEASE BUTTON-HANDLE  
 56 2060409 HANDLE (TOP HALF) MAXIMIZE  
 57 2060415 HANDLE (LOWER HALF)  
 58 2303412 SCREW-6-20 X 5/8 SELF TAP [5.EA]  
 59 2060005 BEARING-HANDLE PIVOT [2.EA]  
 60 2184020 POT ADAPTER  
 61 2992852 ACTUATOR-CAM  
 65 2184000 CONTROL BOARD W/O LEAD 12V  
 66 2181700 WASHER SPACER  
 67 2372100 SCREW-8-18 X 5/8 THD SS [2.EA]  
 68 2383407 SCREW-10-24 X 2 PPH ZINC  
 69 2383124 NUT-10-24 NYLOCK ZINC  
 70 2301310 SCREW-8-18 X 1/2 SS [2.EA]  
 72 2020700 TERMINAL- RING 3/8 [2.EA]  
 73 2263434 SCREW #8 X 1" PPH SS [2.EA]

For parts and service  
 call toll free: 1-888-404-1119  
[www.mikesreelrepair.com](http://www.mikesreelrepair.com)

For parts and service

call toll free: 1-888-404-1119

# MAX50T is 12-volt!

[www.mikesreelrepair.com](http://www.mikesreelrepair.com)

