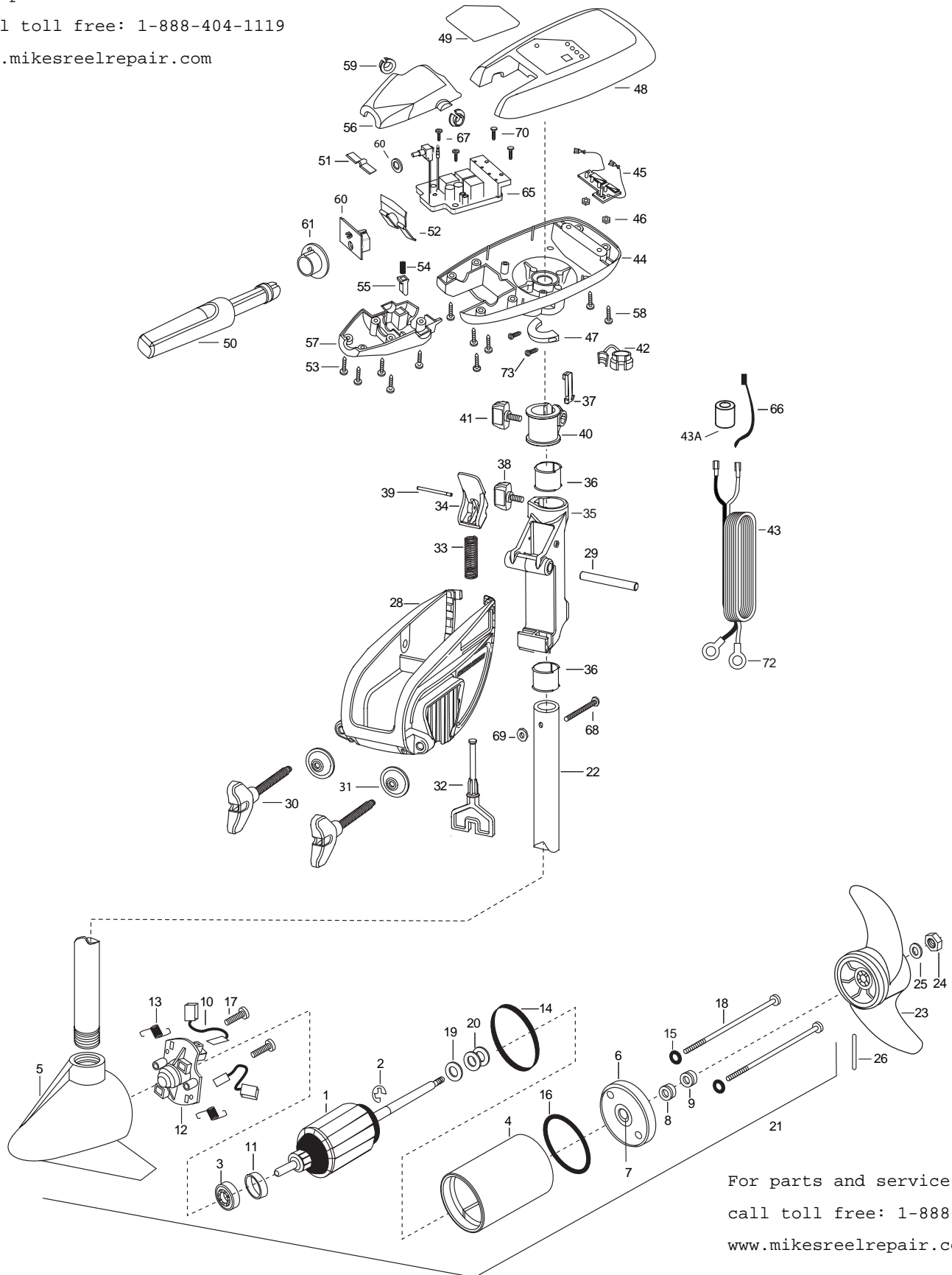


MAXXUM 46T
46 LBS. THRUST
12 VOLT 42 AMPS
36" SHAFT

for use with "AH" serial numbers
3-year warranty from the date of purchase

For parts and service
call toll free: 1-888-404-1119
www.mikesreelrepair.com



For parts and service
call toll free: 1-888-404-1119
www.mikesreelrepair.com

1 2-100-116 ARMATURE ASSEMBLY 12V F/W
 2 788-015 RETAINING RING
 3 140-010 BEARING -BALL
 4 431-101 HOUSING ASSEMBLY CENTER 3.62
 5 421-065 HOUSING BRUSH END ASSEMBLY 3.62 TXT
 6 2-400-101 PLAIN END HOUSING ASSEMBLY
 7 144-049 FLANGE BEARING (SERVICE ONLY)
 8 880-003 SEAL
 9 880-006 SEAL W/SHIELD
 10 188-036 BRUSH ASSEMBLY
 11 725-050 PAPER TUBE- BRUSH RETENTION
 12 738-036 BRUSH PLATE W/HOLDER
 13 975-040 SPRING -TORSION [2.EA]
 14 337-036 GASKET
 15 701-008 O-RING -THRU BOLT [2.EA]
 16 701-081 O-RING
 17 830-007 SCREW 8-32X1 [2.EA]
 18 830-042 THRU BOLT 10-32X8.83 (2 EA)
 19 990-067 WASHER -STEEL THRUST
 20 990-070 WASHER -NYLATRON [2.EA]
 21 2097063 MOTOR ASSEMBLY -12V 3.625 F/W VARS TXT
 22 2032052 TUBE (COMPOSITE) 36"
 ■ 1378131 PROPELLER KIT
 23 2091160 PROPELLER- WEEDLESS WEDGE 2
 24 2151726 WASHER- 5/16 STD SS
 25 2053101 NUT-PROP NYLOC 5/16 SS
 26 2092600 PIN-DRIVE SS
 ■ 2771818 BRACKET & HINGE ASSEMBLY (INCLUDES- 28—39)
 ■ 2771910 BRACKET ASSEMBLY (INCLUDES- 28,30,31)
 *28 2061910 BRACKET- PLASTIC
 29 2060510 PIN-HINGE
 ■ 2881300 SCREW-CLAMP, WASHER, RETAINER KIT [2.EA]
 *30 2061300 SCREW-CLAMP [2.EA]
 *31 2011710 WASHER-CLAMP SCREW [2.EA]
 32 2063605 T-BAR, PLASTIC
 33 2062706 SPRING- (T-BAR)
 34 2067200 LEVER-TILT (RED)
 35 2061810 HINGE-PLASTIC
 36 2037301 BUSHING-HINGE [2.EA]

37 2062800 TENSION BLOCK-SNAP IN
 38 2011385 SCREW, TENSION/KNOB
 39 2060515 PIN, TILT LEVER
 40 2061520 COLLAR-DEPTH
 41 2011365 SCREW-COLLAR/NEW
 42 2052900 STRAIN RELIEF C CORD/SP.C
 43 2090600 LEADWIRE (10 GA) RINGS
 43A 2307310 BEAD - FERRITE (CE MODELS ONLY)
 44 2062592 CONTROL BOX,FW, .725 BORE,
 45 2074070 BATTERY GAUGE-12 VOLTS
 46 2303120 SPEED NUT [2.EA]
 47 2061515 COLLAR-CTRL BOX (FRS-WTR)
 48 2990294 CTRL BOX CVR/DECAL ASSEMBLY
 49 2065666 DECAL-COVER MAX 46/T
 50 2990914 HANDLE ASSEMBLY W/O U-JOINT
 51 2302742 SPRING-DETENT (OFF) SS
 52 2302743 SPRING-DETENT (HANDLE-TILT)
 53 2303412 SCREW-6-20 X 5/8 SELF TAP [6.EA]
 54 2302745 SPRING-RELEASE BUTTON SS
 55 2303720 RELEASE BUTTON-HANDLE
 56 2060409 HANDLE (TOP HALF) MAXIMIZE
 57 2060415 HANDLE (LOWER HALF)
 58 2303412 SCREW-6-20 X 5/8 SELF TAP [5.EA]
 59 2060005 BEARING-HANDLE PIVOT [2.EA]
 60 2184020 POT ADAPTER
 61 2992852 ACTUATOR-CAM
 64 2181700 WASHER, SPACER
 65 2184000 CONTROL BOARD 12V
 66 2256300 TIE WRAP-5.5 BLACK
 67 2372100 SCREW-8-18 X 5/8 THD SS [2.EA]
 68 2383407 SCREW-10-24 X 2 PPH ZINC
 69 2383124 NUT-10-24 NYLOCK ZINC
 70 2301310 SCREW-8-18 X 1/2 SS [2.EA]
 72 2020700 TERMINAL- RING 3/8 [2.EA]
 73 2263434 SCREW #8 X 1" PPH SS [2.EA]

For parts and service

call toll free: 1-888-404-1119

www.mikesreelrepair.com

For parts and service

call toll free: 1-888-404-1119

www.mikesreelrepair.com

Max46T is 12-volt!

