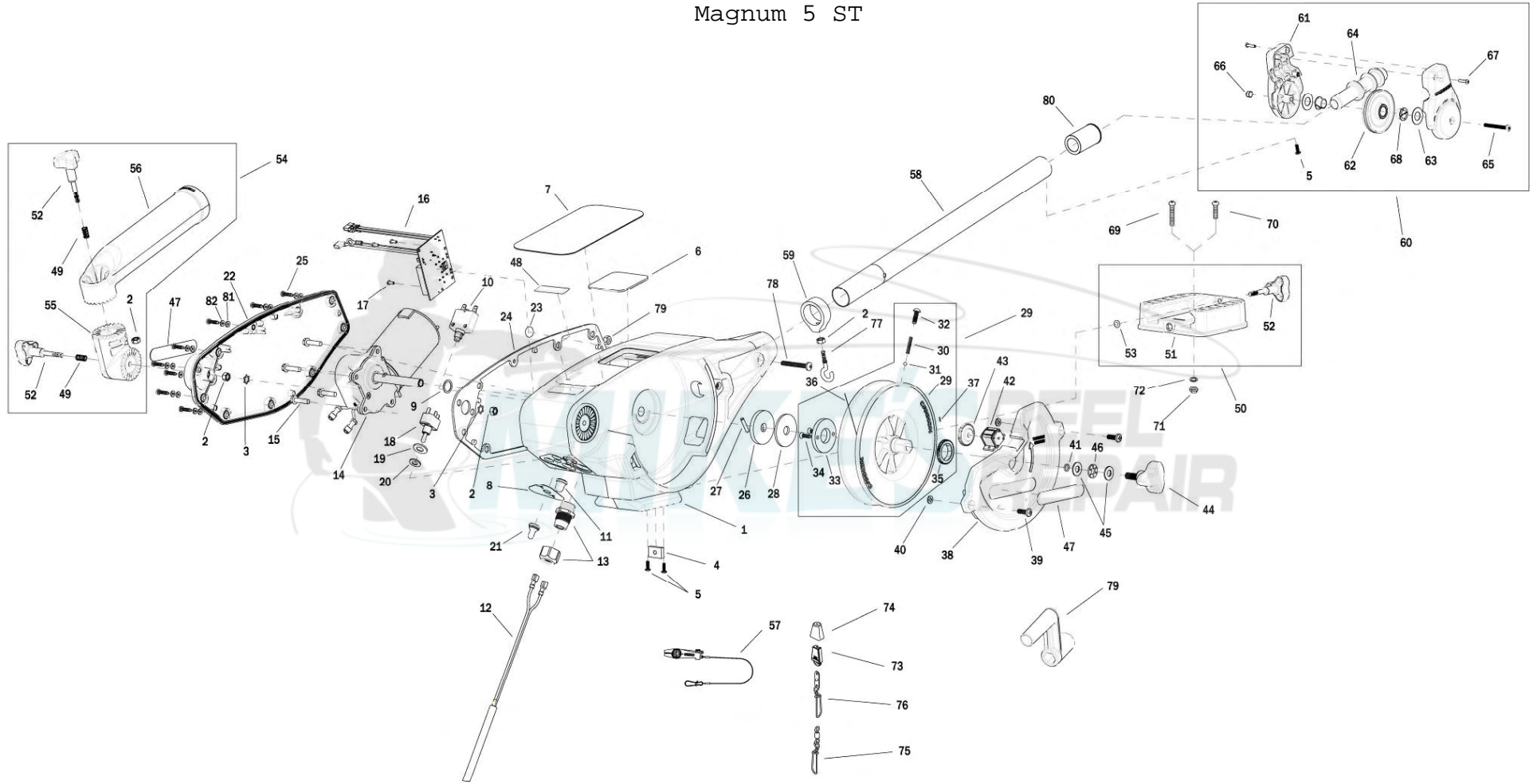
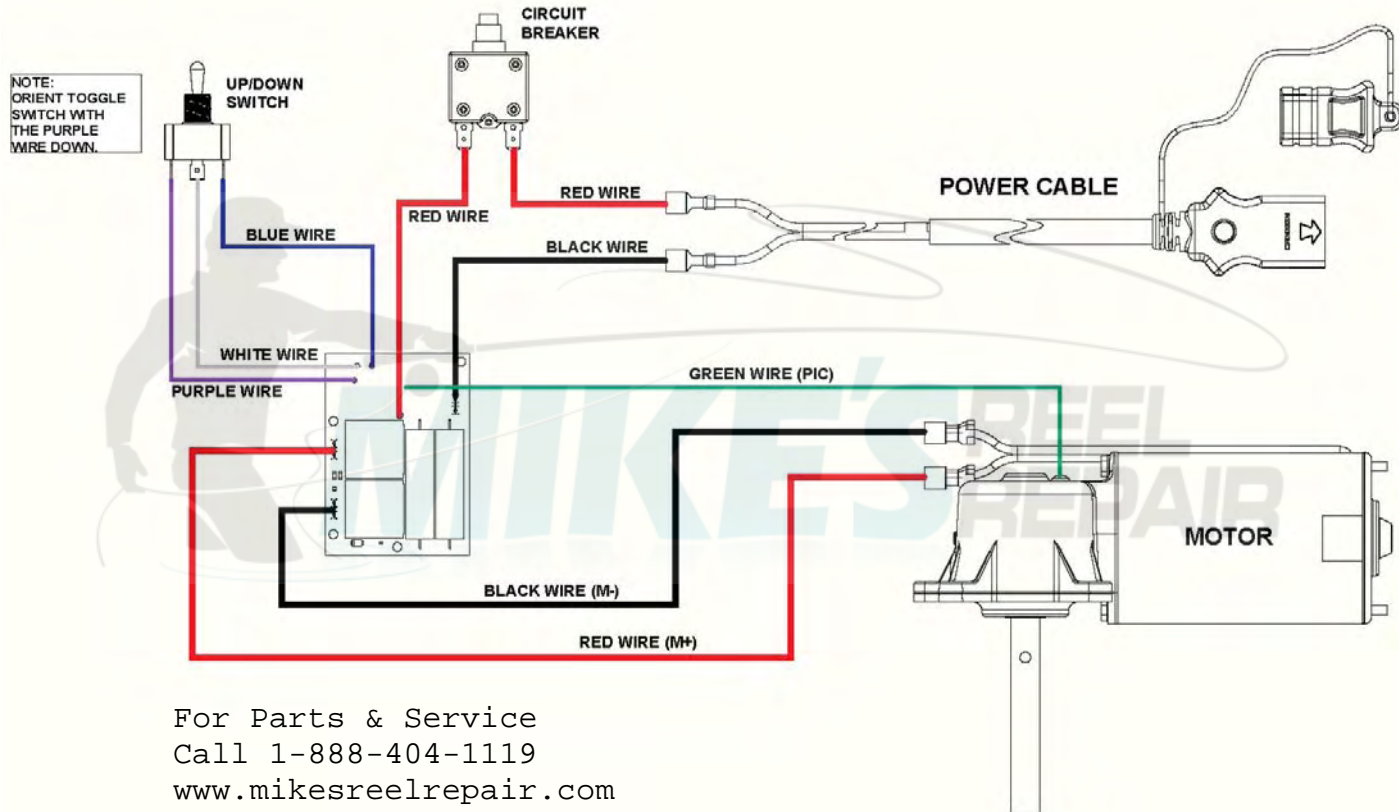


Magnum 5 ST



1	3392524	FRAME, RAW	29	3777927	REEL, ROUGH, 3.75" OD	57	2277002	ASY HDW RELEASE UNIVERSAL
2	2263102	NUT-HEX 1/4-20 SS 300SRS	30	3392707	SPRING, REEL	58	2290828	24" BOOM - HEAVY DUTY
3	3394722	INSERT, PUSH ON	31	3396020	BALL BEARING, REEL	59	3397900	BALL HOOK EXTRUSION
4	3394702	INSERT, BASE	32	3393474	SCREW-DRIVE #14 X .75" SS	60	3990200	ASSY-CNN, BOOM END (SUB)
5	2373450	SCREW-#8-18 X 3/8 THD* (SS)	33	3391906	PLATE, CLUTCH REEL	61	3392520	CASE, PULLEY
6	3396510	LENS-WINDOW MAG DTIV	34	3393418	SCREW-#10-16X.75"HI-LO SS	62	3392300	SHEEVE, PULLEY
7	3395559	DECAL, MAG 5	35	0233560	GEAR, REEL, STD	63	3391507	SHIM, BOOM END
8	3396601	SEAL PLATE, MAGNUM	36	3775397	400' CABLE	64	3392013	BOOM END, NEW
9	3391730	WASHER, SEAL, DATA	37	9100070	CON LEADER SLEEVE	65	3393485	SCREW-#10-24X1.75 PPHMS S
10	3398205	CIRCUIT BREAKER, 25 AMP	38	3390205	COVER, REEL	66	3393124	NUT-#10-32 NYLOK 18-8 SS
11	1221491	BOOT CIRCUIT BREAKER	39	2373434	SCREW-1/4-20 X 3/4 SS PPMs	67	2303412	SCREW-#6-20 X 5/8 SELF TAP
12	3993220	ASSY, POWER CABLE, RETRO(SUB)	40	2071718	WASHER #10 NYLON RETAINING	68	3390005	BEARING-NYLINER, #8L5-1/2-F
13	3392920	STRAIN-RELIEF, HEYCO M4502	41	3394605	O-RING, KNOB	69	9280720	HDW SCR 1/4 20X2 TRUSS HD PHIL
14	3996515	MOTOR/GEAR HOUSING ASSY	42	0220477	METER 3 DIGIT	70	9280713	HDW SCR 1/4 20X1 1/2 TRUSS HEA
15	3393411	SCREW-FLANGE HEX HI-LO	43	0833561	GEAR, COUNTER	71	2263103	NUT-1/4-20 NYLOCK SS
16	3394006	ASY PCA, MAGNUM	44	3390103	KNOB, SOFT GRIP, CLUTCH	72	2371712	WASHER-FLAT 9/32 X 5/8 X 1/16
17	2302104	SCREW-#6-20 X 3/8	45	3391737	HDW WASHER, THRUST	73	9100100	CON TERMINATOR
18	2286792	SWITCH, TOGGLE	46	9010280	HDW BEARING, THRUST	74	9100101	CUSHION SLEEVE TERMINATOR
19	3391722	WASHER, FLAT	47	3395634	DECAL- SIDE, BLACK	75	9100620	HDW SNAP SWIVEL 4/0-37 MARLIN
20	2286793	HDW SHIM SWITCH .75X.1	48	3395710	DECAL-PIC BLACK	76	2200148	ASY SNAP & INSULATOR
21	1221490	BOOT SWITCH	49	2287002	HDW SPRING RELEASE PIN	77	9040040	HDW BOLT 1/4-20 ROLLEDTHD HOOK
22	3390203	COVER, MOTOR	50	3991930	ASY, MNT BASE DT/MAG(SUB)	78	3393461	SCREW-1/4-20 x 2" SS, PPH
23	401966-3	MIC VENT,PTFE LU LRA MATERIAL	51	3391955	BASE-MOUNT, DT PRO/MAG ST	79	3390910	HANDLE-CRANK, MANUAL
24	3396902	GASKET, COVER	52	3390101	KNOB-CANNON, SOFT GRIP	80	3395905	ADAPTER, BOOM END
25	3393480	SCREW-#10X.75"PPH HI-LO SS	53	3393000	RING, RETAINING, 1/4" SHAFT	81	3391732	WASHER, SEALING
26	3391907	PLATE, CLUTCH SHAFT	54	3991904	ASSY-CNN, ROD HOLDER	82	3394602	WASHER, FLAT, #8, SS
27	3392640	PIN, DRIVESHAFT	55	3394200	ARM, DUAL AXIS-ROD HOLDER			
28	3391711	PAD, CLUTCH	56	3392033	TUBE, DUAL AXIS RD HLDR			

# Magnum Series Wiring Diagram



For Parts & Service  
Call 1-888-404-1119  
[www.mikesreelrepair.com](http://www.mikesreelrepair.com)