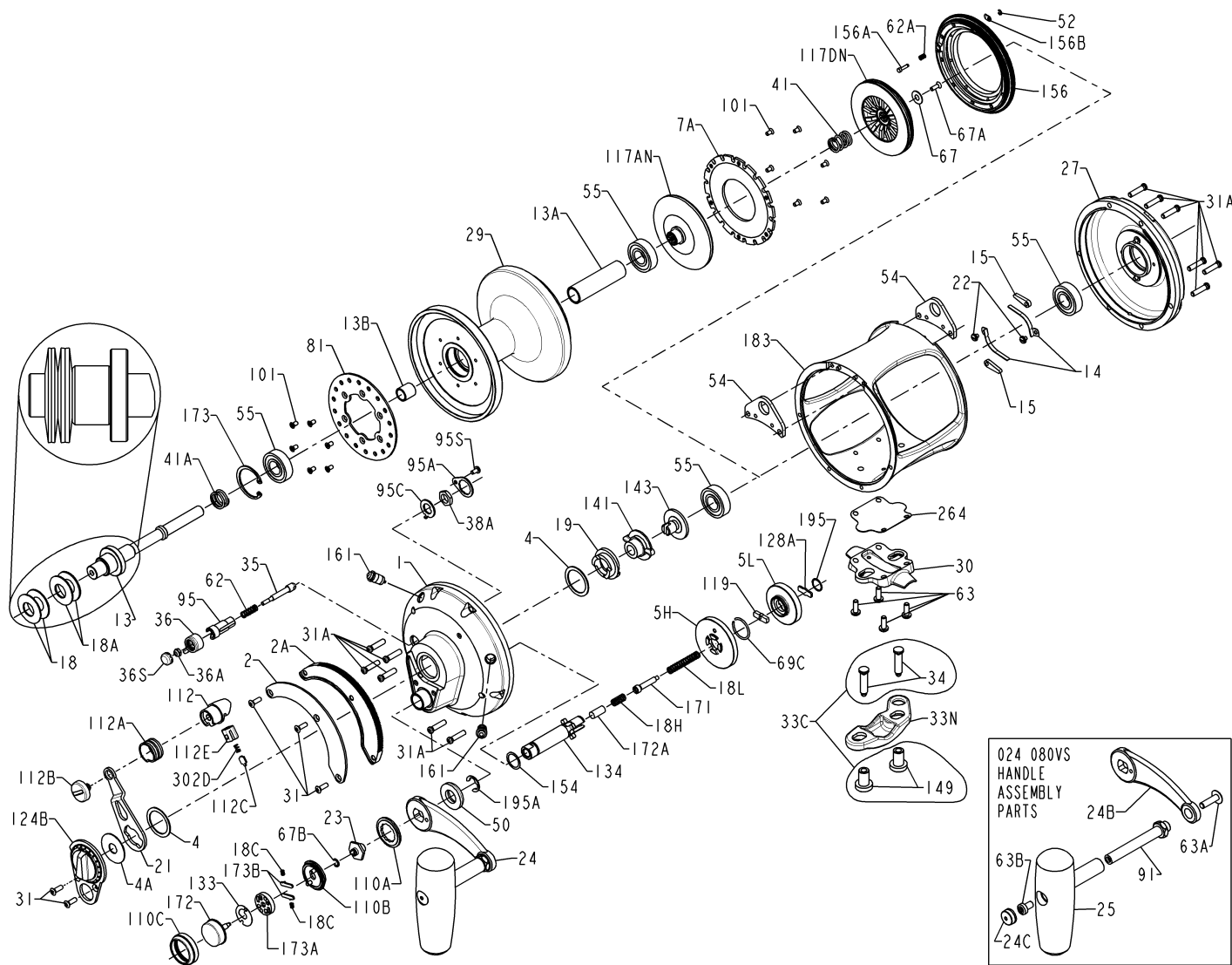




PARTS LIST FOR MODEL 70VS After Serial Number F070001

REEL ASM NO. 1151036



<u>KEY NO.</u>	<u>DESCRIPTION</u>	<u>PART NO.</u>	<u>PENN STYLE NO.</u>
29	Spool Assembly	1191533	029L070VS
30	Stand	1191552	030 050VS
31	Oval Head Screw (5 req)	1182700	031T070
31A	Side Plate Screw (12 req)	1191564	031 080VS
33C	Rod Clamp Kit	1182770	033C070VS
33N	Rod Clamp	1191619	033N070
34	Clamp Screw (2 req.)	1182792	034 070VS
35	Click Tongue	1191667	035 070VS
36	Click Button	1183047	036N050
36A	Click Button Nut	1183014	036 700
36S	Click Button Cap	1183051	036S080ST
38A	Click Bushing Nut	1183157	038 710
41	Bearing Spring	1183325	041 050
41A	Drag Spring	1183328	041 070
50	Gear Stud Shield	1191966	050 050VS
52	Retaining "E" Ring	1183840	052 910
54	Harness Lug (2 req.)	1183866	054A080S
55	Ball Bearing (4 req.)	1183878	055 080
62	Click Spring	1184022	062 050
62A	Cover Locking Spring	1184029	062 545
63	Stand Screw (4 req.)	1184045	063 030T
63A	Handle Shaft Screw	1184056	063A050
63B	Handle Knob Screw	1192077	063 080VS
67	Pinion Gear Washer	1184106	067 070
67A	Retaining Screw	1184111	067A070
67B	Retaining "C" Ring	1184105	067 030VS
69C	Shift Retaining Ring	1184133	069C245
81	Click Ratchet	1184205	081 070
91	Handle Knob Shaft	1192179	091 080VS
95	Click Tongue Bushing	1184307	095 070
95A	Click Retaining Plate	1184312	095B070
95C	Click Bushing Washer	1184311	095A050
95S	Click Retaining Plate Screw	1183586	046A704
101	Flat Head Screw (12 req)	1184403	101 030
110A	Handle Screw Locking Ring	1184440	110A030VS
110B	Shifter Base Plate Asm	1184446	110B030VS
110C	Shift Button Retaining Ring	1184447	110C030VS
112	Eccentric Knob	1192711	112B030VS
112A	Eccentric Knob Sleeve	1184460	112A030VS
112B	Eccentric Knob Screw	1184464	112B070
112C	Eccentric Click Plate	1192712	112C030VS
112E	Click Plate Housing	1192713	112E030VS
117AN	Inner Drive Plate	1184496	117AN070
117DN	Outer Drive Plate	1184503	117DN070VS
119	Shift Plate	1184515	119 024KG
124B	Bridge Cover Assembly	1184550	124L070
128A	Shift Drive Plate	1184566	128A024KG
133	Shifter Retaining Plate	1184602	133 030VS
134	Gear Stud	1192311	134 070VS
141	Cam Follower	1184656	141 070
143	Preset Screw	1184674	143 070
149	Rod Clamp Nut (2 req.)	1184703	149 070
154	Gear Stud Shim	1184719	154 080
156	Sealed Drag Cover Asm	1184739	156N050VS
156A	Drag Cover Lock Pin	1184752	156A030VS
156B	Drag Cover Lock Plate	1184756	156B030VS
161	Locating Pin Asm (2 req)	1192369	161C030VSW
171	Shift Plunger	1184811	171 015KG
172	Shift Button, Metal	1226062	172N030VS
172A	Gear Stud Spring Spacer	1192378	172A070VS
173	Retaining "C" Ring	1184839	173 080VS
173A	Shifter Catch Holder	1184848	173A030VS
173B	Shifter Catch Plate (2 req.)	1184835	173 030VS
183	Frame W / Dowel Pins	1192397	183 070VS
195	Spiral Retaining Ring	1184954	195 024KG
195A	Retaining "E" Ring	1184955	195 040
264	Stand Gasket	1192542	264 030VS
302D	Eccentric Click Plate Spring	1185255	302D525MAG

<u>KEY NO.</u>	<u>DESCRIPTION</u>	<u>PART NO.</u>	<u>PENN STYLE NO.</u>	<u>KEY NO.</u>	<u>DESCRIPTION</u>	<u>PART NO.</u>	<u>PENN STYLE NO.</u>
1	Right Side Plate Assembly	1190807	001 070VS	18	Disc Clutch Spring (2 req.)	1181616	018 080
2	Quadrant Ring	1180601	002 070	18A	Disc Clutch Spring (2 req.)	1181617	018 080W
2A	Quadrant Spacer / Ratchet	1190903	002A070VS	18C	Shift Button Spring (2 req.)	1181632	018C015KG
4	Cam Thrust Washer (2 req.)	1180756	004 070	18H	Shift Spring (Heavy)	1181634	018H030VS
4A	Thrust Washer	1180792	004A070	18L	Shift Spring (Light)	1181637	018L030VS
5H	Main Gear (High Speed)	1192579	005 070VSHS	19	Eccentric Cam	1181649	019 070
5L	Main Gear (Low Speed)	1192580	005 070VLSL	21	Eccentric Lever	1181836	021 070
7A	Metal Drag Washer	1181035	007A050VS	22	Dog Spring Screw (2 req.)	1181912	022 109
13	Pinion Gear Assembly	1181302	013 070	23	Handle Screw	1181933	023 030VS
13A	Spool Sleeve	1181372	013B070VS	24	Handle Assembly	1181982	024 080VS
13B	Pinion Gear Sleeve	1181371	013B070	24B	Handle Blank	1223798	024 080VS-1
14	Dog Spring (2 req.)	1181391	014 050	24C	Handle Knob Cap	1191336	024C080ST
15	Dog (2 req.)	1181425	015 050	25	Knob, Molded Handle	1224726	025 080STM
				27	Left Side Plate Assembly	1191379	027 070VS