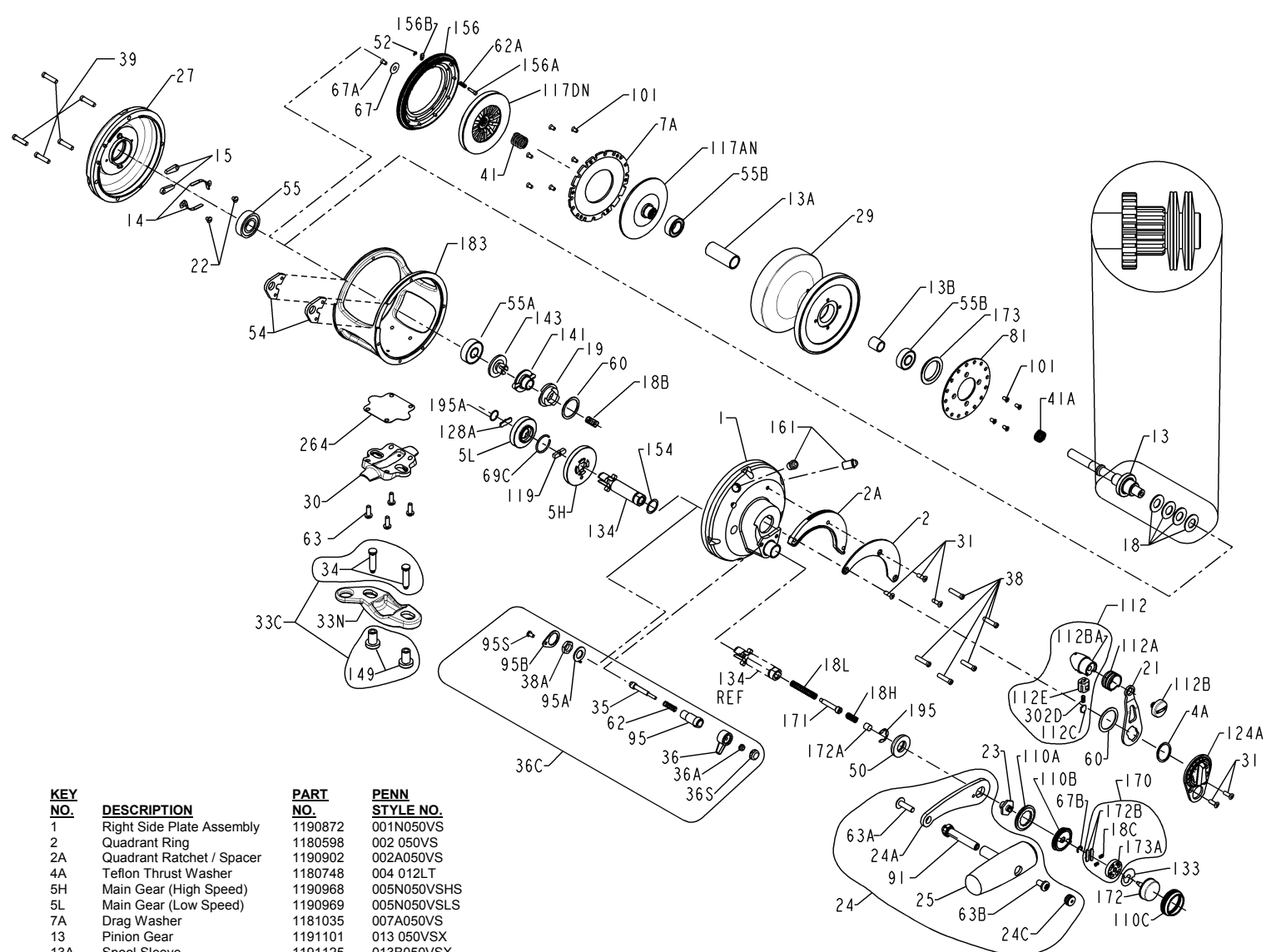




PARTS LIST FOR MODEL 50VSX, 1151035



KEY NO.	DESCRIPTION	PART NO.	PENN STYLE NO.
1	Right Side Plate Assembly	1190872	001N050VS
2	Quadrant Ring	1180598	002 050VS
2A	Quadrant Ratchet / Spacer	1190902	002A050VS
4A	Teflon Thrust Washer	1180748	004 012LT
5H	Main Gear (High Speed)	1190968	005N050VSHS
5L	Main Gear (Low Speed)	1190969	005N050VSL
7A	Drag Washer	1181035	007A050VS
13	Pinion Gear	1191101	013 050VSX
13A	Spool Sleeve	1191125	013B050VSX
13B	Pinion Gear Sleeve	1181371	013B070
14	Dog Spring (2 req.)	1181391	014 050
15	Dog (2 req.)	1181425	015 050
18	Clutch Spring (4 req.)	1181613	018 050TW
18B	Drag Spring	1181622	018 349
18C	Shift Catch Spring (2 req.)	1181632	018C015KG
18H	Shift Spring (Heavy)	1181634	018H030VS
18L	Shift Spring (Light)	1181637	018L030VS
19	Drag Cam	1181646	019 050VS
21	Drag Lever	1181834	021 050VS
22	Dog Spring Screw (2 req.)	1181912	022 109

KEY NO.	DESCRIPTION	PART NO.	PENN STYLE NO.
23	Handle Screw	1181933	023 030VS
24	Handle Assembly	1181972	024 030VS
24A	Handle Blank	1205614	024 030VS-1
24C	Handle Knob Cap	1191334	024C050M
25	Handle Knob Assembly	1206009	0255050M
27	Left Side Plate Assembly	1191472	027N050VSX
29	Spool Assembly	1191532	029L050VSX
30	Stand	1191552	030 050VS
31	Drag Lever/Quad Screw (5 req.)	1182700	031T070

KEY NO.	DESCRIPTION	PART NO.	PENN STYLE NO.
112	Drag Lever Knob Assembly	1184456	112 030VS
112A	Drag Knob Sleeve	1184460	112A030VS
112B	Drag Knob Screw	1184464	112B070
112BA	Drag Lever Knob	1192711	112B030VS
112C	Drag Click Plate	1192712	112C030VS
112E	Lever Click Plate Housing	1192713	112E030VS
117AN	Inner Drive Plate Assembly	1184496	117AN070
117DN	Drive Plate Assembly	1184503	117DN070VS
119	Hi/Low Gear Shift Plate	1184515	119 024KG
124A	Bridge Cover Preset Asm	1184549	124L050VS
128A	Low Gear Drive Plate	1184566	128A024KG
133	Shifter Retaining Plate	1184602	133 030VS
134	Gear Stud	1192325	134N050VS
141	Cam Follower	1184655	141 050VS
143	Preset Screw	1184673	143 050VS
149	Rod Clamp Nut (2 req.)	1184703	149 070
*154	*Gear Stud Shim (As Needed)	*1184719	*154 080
156	Drag Cover Assembly	1184739	156N050VS
156A	Drag Cover Lock Pin	1184752	156A030VS
156B	Drag Cover Lock Plate	1184756	156B030VS
161	Locating Pin Asm (2 req.)	1192369	161C030VSX
170	Shifter Catch Holder Asm	1184809	170 030VS
171	Shifter Plunger (Screw)	1184813	171 030VS
172	Shift Button, Metal	1226062	172N030VS
172A	Shifter Spacer	1184827	172A050VS
172B	Shifter Catch Plate(2 req.)	1184835	173 030VS
173	Spool Bushing	1184838	173 050VS
173A	Shifter Catch Holder	1184848	173A030VS
173B	Tube Frame	1192733	183 050VSX
195	Retaining Ring	1184955	195 040
195A	Spiral Retaining Ring	1184954	195 024KG
264	Stand Gasket	1192542	264 030VS
302D	Drag Click Plate Spring	1185255	302D525MAG

KEY NO.	DESCRIPTION	PART NO.	PENN STYLE NO.
33C	Rod Clamp Kit	1182770	033C070VS
33N	Rod Clamp	1191619	033N070
34	Clamp Screw (2 req.)	1182792	034 070VS
35	Click Tongue	1191667	035 070VS
36	Click Lever	1183047	036N050
36A	Click Lever Nut	1183014	036 700
36C	Clicker Assembly	1183039	036C050VSW
36S	Click Button Cap	1183051	036S080ST
38	Right Side Plate Screw (5 req.)	1191724	038 050VSX
38A	Click Bushing Nut	1183157	038 710
39	Left Side Plate Screw (5 req.)	1191740	039 050VSX
41	Drive Plate Bearing Spring	1183325	041 050
41A	Drag Spring	1183328	041 070
50	Gear Stud Shield	1191966	050 050VS
52	Cover Lock Retaining Ring	1183840	052 910
54	Harness Lug (2 req.)	1183854	054 050T
55	Left Side Ball Bearing	1183878	055 080
55A	Right Side Ball Bearing	1183876	055 050
55B	Spool Ball Bearing (2 req.)	1183879	055 080ST
60	Drag Thrust Washer (2 req.)	1183983	060 050
62	Click Spring	1184022	062 050
62A	Drag Cover Lock Spring	1184029	062 545
63	Stand Screw (4 req.)	1184045	063 030T
63A	Handle Rivet Screw	1184056	063A050
63B	Handle Knob Screw	1184046	063 050
67	Pinion Retaining Washer	1184106	067 070
67A	Pinion Retaining Screw	1184111	067A070
67B	Shifter Retaining Ring	1184105	067 030VS
69C	H / L Gear Retaining Ring	1184133	069C245
81	Ratchet Disk Plate	1184204	081 050
91	Handle Rivet	1184304	091N050
95	Click Tongue Bushing	1184307	095 070
95A	Click Bushing Washer	1184311	095A050
95B	Click Retaining Plate	1184312	095B070
95S	Click Retaining Plate Screw	1181953	023 750
101	Flat Head Screw (10 req.)	1184403	101 030
110A	Handle Screw Locking Ring	1184440	110A030VS
110B	Shifter Base	1184446	110B030VS
110C	Shift Button Retaining Ring	1184447	110C030VS
112	Drag Lever Knob Assembly	1184456	112 030VS
112A	Drag Knob Sleeve	1184460	112A030VS
112B	Drag Knob Screw	1184464	112B070
112BA	Drag Lever Knob	1192711	112B030VS
112C	Drag Click Plate	1192712	112C030VS
112E	Lever Click Plate Housing	1192713	112E030VS
117AN	Inner Drive Plate Assembly	1184496	117AN070
117DN	Drive Plate Assembly	1184503	117DN070VS
119	Hi/Low Gear Shift Plate	1184515	119 024KG
124A	Bridge Cover Preset Asm	1184549	124L050VS
128A	Low Gear Drive Plate	1184566	128A024KG
133	Shifter Retaining Plate	1184602	133 030VS
134	Gear Stud	1192325	134N050VS
141	Cam Follower	1184655	141 050VS
143	Preset Screw	1184673	143 050VS
149	Rod Clamp Nut (2 req.)	1184703	149 070
*154	*Gear Stud Shim (As Needed)	*1184719	*154 080
156	Drag Cover Assembly	1184739	156N050VS
156A	Drag Cover Lock Pin	1184752	156A030VS
156B	Drag Cover Lock Plate	1184756	156B030VS
161	Locating Pin Asm (2 req.)	1192369	161C030VSX
170	Shifter Catch Holder Asm	1184809	170 030VS
171	Shifter Plunger (Screw)	1184813	171 030VS
172	Shift Button, Metal	1226062	172N030VS
172A	Shifter Spacer	1184827	172A050VS
172B	Shifter Catch Plate(2 req.)	1184835	173 030VS
173	Spool Bushing	1184838	173 050VS
173A	Shifter Catch Holder	1184848	173A030VS
173B	Tube Frame	1192733	183 050VSX
195	Retaining Ring	1184955	195 040
195A	Spiral Retaining Ring	1184954	195 024KG
264	Stand Gasket	1192542	264 030VS
302D	Drag Click Plate Spring	1185255	302D525MAG