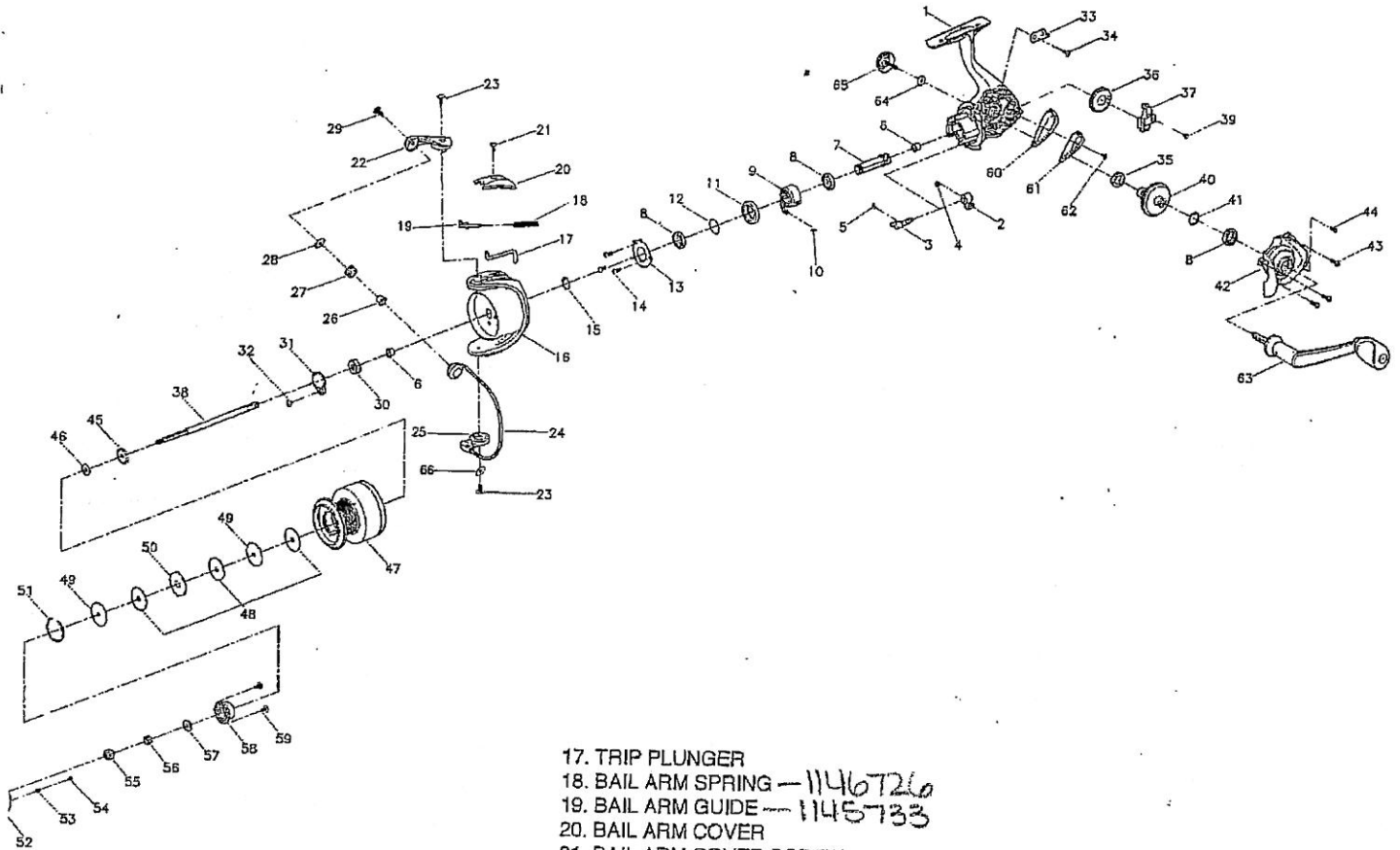


INT435F

In trepid 435F



NO. PART NAME

- 1. BODY ASSEMBLY
- 2. N-R LEVER
- 3. N-R LEVER SHAFT
- 4. N-R LEVER SCREW
- 5. N-R LEVER SPRING
- 6. PINION BUSHING
- 7. PINION
- 8. BALL BEARING 14 x 8 x 3.5 - 1145073
- 9. ONE WAY CLUTCH ASSEMBLY - 1145112
- 10. CLUTCH SPRING - 1146736
- 11. BEARING SLEEVE
- 12. WASHER
- 13. BEARING COVER
- 14. SCREW BEARING COVER
- 15. WASHER PINION
- 16. ROTOR ASSEMBLY

- 17. TRIP PLUNGER
- 18. BAIL ARM SPRING - 1146726
- 19. BAIL ARM GUIDE - 1145733
- 20. BAIL ARM COVER
- 21. BAIL ARM COVER SCREW
- 22. BAIL ARM
- 23. BAIL ARM SCREW
- 24. BAIL WIRE ASSEMBLY - 1145048
- 25. BAIL HOLDER
- 26. LINE ROLLER BUSHING - 1146340
- 27. LINE ROLLER - 1146122
- 28. LINE ROLLER WASHER - 1146856
- 29. L-ROLLER SCREW - 1146251
- 30. ROTOR NUT
- 31. ROTOR NUT WASHER
- 32. ROTOR NUT SCREW
- 33. O/S SLIDER PLATE
- 34. O/S SLIDER PLATE SCREW
- 35. BUSHING 12 x 8 x 2.5 - 1145076
- 36. O/S GEAR - 1145657
- 37. O/S SLIDER
- 38. MAIN SHAFT
- 39. O/S SLIDER SCREW
- 40. DRIVE GEAR - 1145667
- 41. GEAR WASHER - 1146817
- 42. BODY COVER ASSEMBLY
- 43. COVER SCREW A - 1146271
- 44. COVER SCREW B

- 45. CLICK GEAR - 1146029
- 46. SHEET WASHER - 1146805
- 47. SPOOL ASSEMBLY - 1146592
- 48. DRAG WASHER
- 49. LINING WASHER
- 50. SPOOL WASHER
- 51. STOP RING
- 52. DRAG KNOB - 1145902
- 53. DRAG CLICK SPRING
- 54. DRAG CLICK PIN
- 55. DRAG NUT
- 56. DRAG SPRING
- 57. DRAG SPING WASHER
- 58. DRAG KNOB COVER
- 59. DRAG KNOB SCREW
- 60. INNER COVER
- 62. REAR COVER SCREW
- 63. HANDLE ARM ASSEMBLY - 1145525
- 64. HANDLE LOCK WASHER
- 65. HANDLE LOCK ASSEMBLY - 1145276
- 66. BAIL HOLDER WASHER