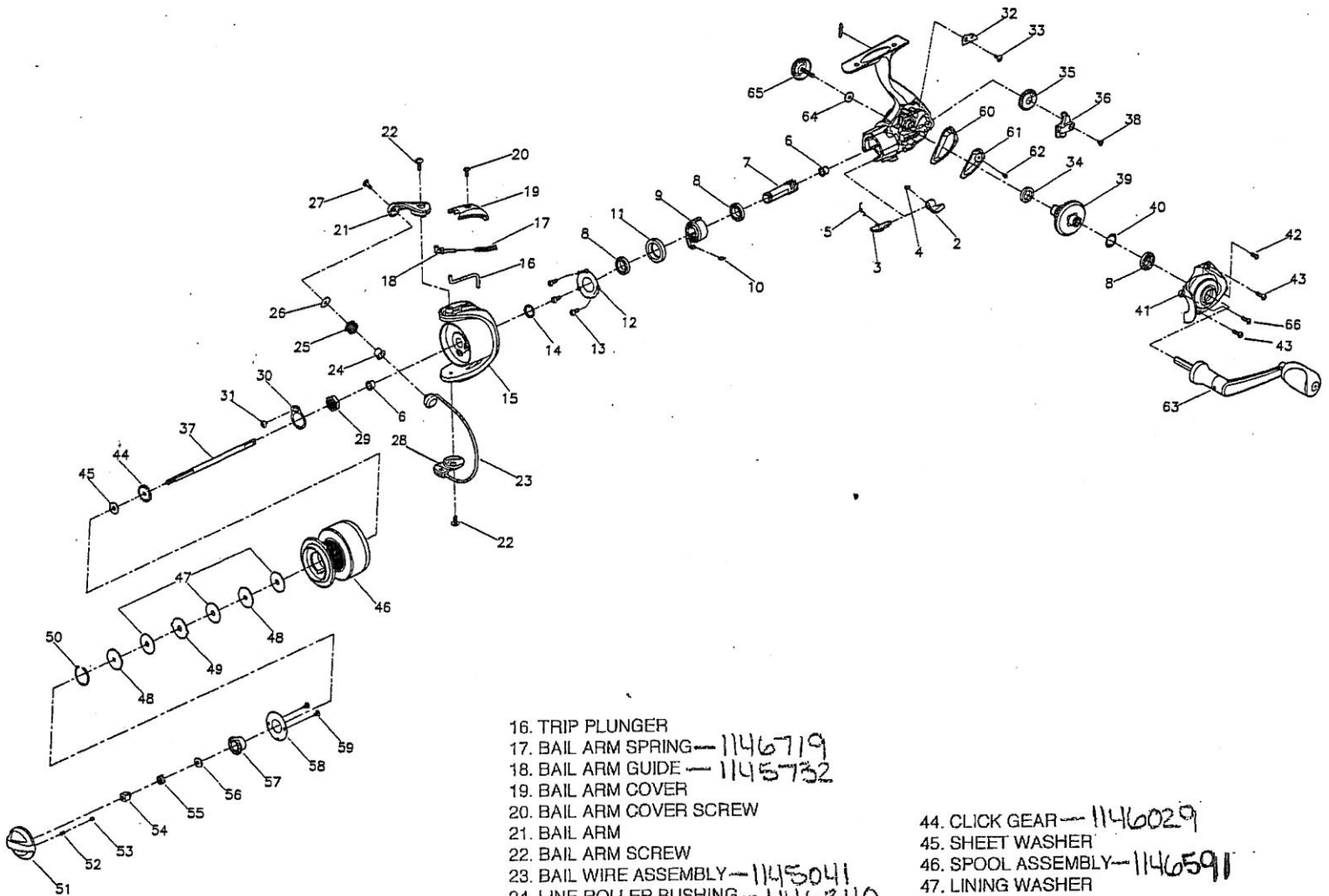


INT430F

Intrepid 430F



NO. PART NAME

- 1. BODY ASSEMBLY
- 2. N-R LEVER
- 3. N-R LEVER SHAFT
- 4. N-R LEVER SCREW
- 5. N-R LEVER SPRING
- 6. PINION BUSHING
- 7. PINION
- 8. BALL BEARING 14 x 8 x 3.5 - 1145073
- 9. ONE WAY CLUTCH ASSEMBLY - 1145112
- 10. CLUTCH SPRING - 1146736
- 11. BEARING SLEEVE
- 12. BEARING COVER
- 13. SCREW BEARING COVER
- 14. WASHER PINION
- 15. ROTOR ASSEMBLY

- 16. TRIP PLUNGER
- 17. BAIL ARM SPRING - 1146719
- 18. BAIL ARM GUIDE - 1145732
- 19. BAIL ARM COVER
- 20. BAIL ARM COVER SCREW
- 21. BAIL ARM
- 22. BAIL ARM SCREW
- 23. BAIL WIRE ASSEMBLY - 1145041
- 24. LINE ROLLER BUSHING - 1146340
- 25. LINE ROLLER - 1146122
- 26. LINE ROLLER WASHER - 1146856
- 27. L-ROLLER SCREW
- 28. BAIL HOLDER
- 29. ROTOR NUT
- 30. ROTOR NUT WASHER
- 31. ROTOR NUT SCREW
- 32. O/S SLIDER PLATE
- 33. SCREW SLIDER PLATE
- 34. BUSHING 12 x 8 x 2.5
- 35. O/S GEAR
- 36. O/S SLIDER
- 37. MAIN SHAFT
- 38. O/S SLIDER SCREW
- 39. DRIVE GEAR
- 40. GEAR WASHER - 1146817
- 41. BODY COVER ASSEMBLY
- 42. COVER SCREW A
- 43. COVER SCREW B

- 44. CLICK GEAR - 1146029
- 45. SHEET WASHER
- 46. SPOOL ASSEMBLY - 1146591
- 47. LINING WASHER
- 48. SPOOL WASHER
- 49. DRAG WASHER
- 50. STOP RING
- 51. DRAG KNOB - 1145904
- 52. DRAG CLICK SPRING
- 53. DRAG CLICK PIN
- 54. DRAG NUT
- 55. DRAG SPRING
- 56. DRAG SPRING WASHER
- 57. DRAG KNOB COVER
- 58. DRAG KNOB COVER PLATE
- 59. DRAG KNOB SCREW
- 60. INNER COVER
- 61. REAR COVER
- 62. REAR COVER SCREW
- 63. HANDLE ARM ASSEMBLY - 1145525
- 64. HANDLE LOCK WASHER
- 65. HANDLE LOCK ASSEMBLY - 1145276
- 66. COVER SCREW C

Bail Assy - 1145044