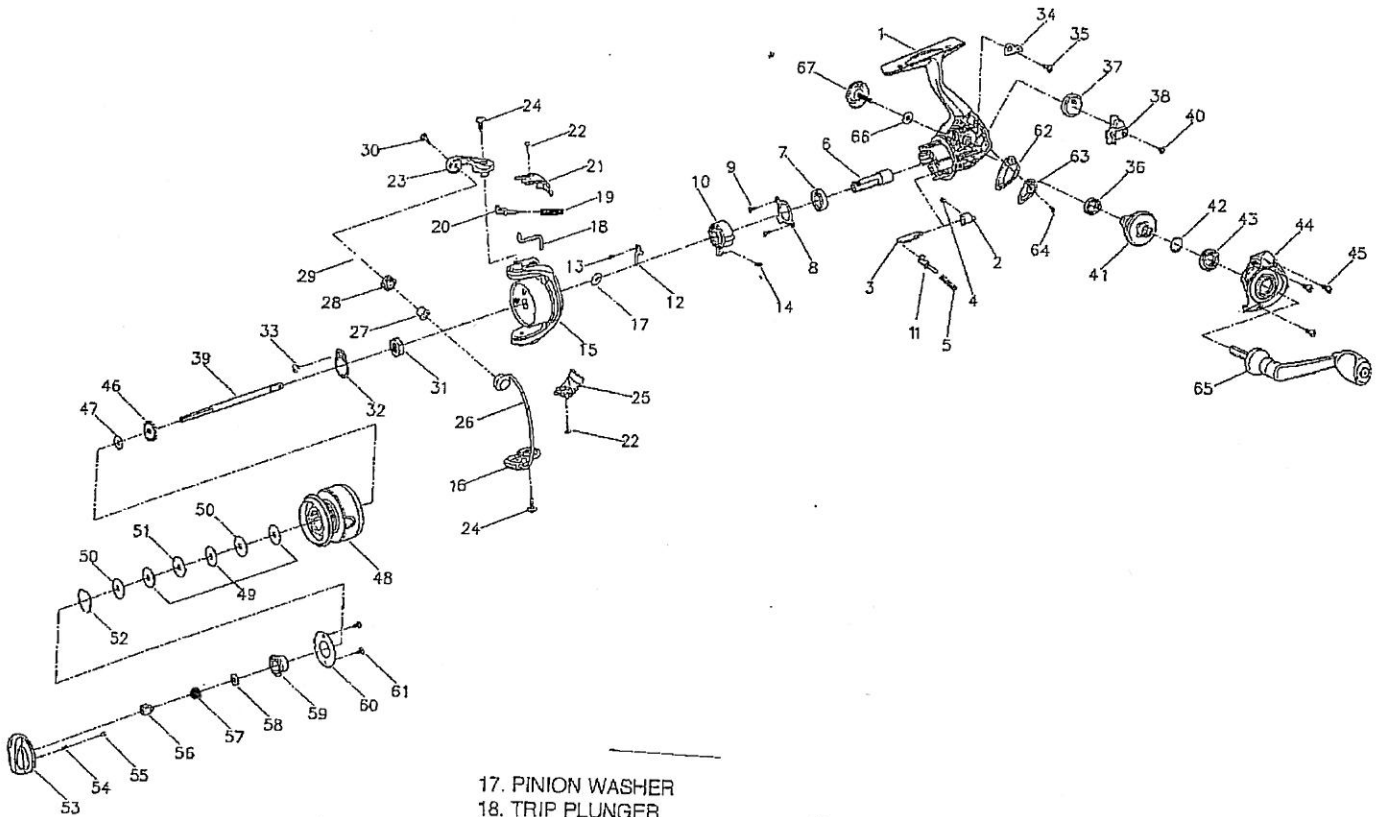


INT420F

Intrepid
420UL



NO. PART NAME

- 1. BODY ASSEMBLY
- 2. N-R LEVER
- 3. N-R LEVER SHAFT
- 4. N-R LEVER SCREW
- 5. N-R LEVER SPRING
- 6. PINION
- 7. BALL BEARING 14 x 7 x 3.5 - 1145082
- 8. BEARING COVER
- 9. SCREW BEARING COVER
- 10. ONE WAY CLUTCH - 1145111
- 11. N-R LEVER SPRING GUIDE
- 12. CLUTCH RETAINER
- 13. SCREW RETAINER
- 14. CLUTCH SPRING - 1146736
- 15. ROTOR ASSEMBLY
- 16. BAIL HOLDER

- 17. PINION WASHER
- 18. TRIP PLUNGER
- 19. BAIL ARM SPRING - 1146719
- 20. BAIL ARM GUIDE - 1145732
- 21. BAIL ARM COVER
- 22. BAIL ARM COVER SCREW
- 23. BAIL ARM
- 24. BAIL ARM SCREW - 1146185
- 25. BAIL HOLDER COVER
- 26. BAIL WIRE ASSEMBLY - 1145050
- 27. LINE ROLLER BUSHING - 1146340
- 28. LINE ROLLER - 1146122
- 29. LINE ROLLER WASHER - 1146856
- 30. L-ROLLER SCREW
- 31. ROTOR NUT
- 32. ROTOR NUT WASHER
- 33. ROTOR NUT SCREW
- 34. O/S SLIDER PLATE
- 35. SCREW SLIDER PLATE
- 36. GEAR BEARING 14 x 7 x 2.5 - 1145126
- 37. O/S GEAR - 1145664
- 38. O/S SLIDER
- 39. MAIN SHAFT
- 40. O/S SLIDER SCREW
- 41. DRIVE GEAR - 1145697
- 42. GEAR WASHER
- 43. BEARING 14 x 8 x 3.5 - 1145073

- 44. BODY COVER ASSEMBLY
- 45. COVER SCREW
- 46. CLICK GEAR - 1146029
- 47. SHEET WASHER - 1146805
- 48. SPOOL ASSEMBLY - 1146594
- 49. DRAG WASHER
- 50. LINE WASHER
- 51. SPOOL WASHER
- 52. STOP RING
- 53. DRAG KNOB - 1145904
- 54. DRAG CLICK SPRING
- 55. DRAG CLICK PIN
- 56. DRAG NUT
- 57. DRAG SPRING
- 58. DRAG SPRING WASHER
- 59. DRAG KNOB COVER
- 60. DRAGE KNOB COVER PLATE
- 61. DRAGE KNOB SCREW
- 62. INNER COVER
- 63. REAR COVER
- 64. REAR COVER SCREW
- 65. HANDLE ARM ASSEMBLY - 1145527
- 66. HANDLE LOCK WASHER
- 67. HANDLE LOCK ASSEMBLY - 1145276