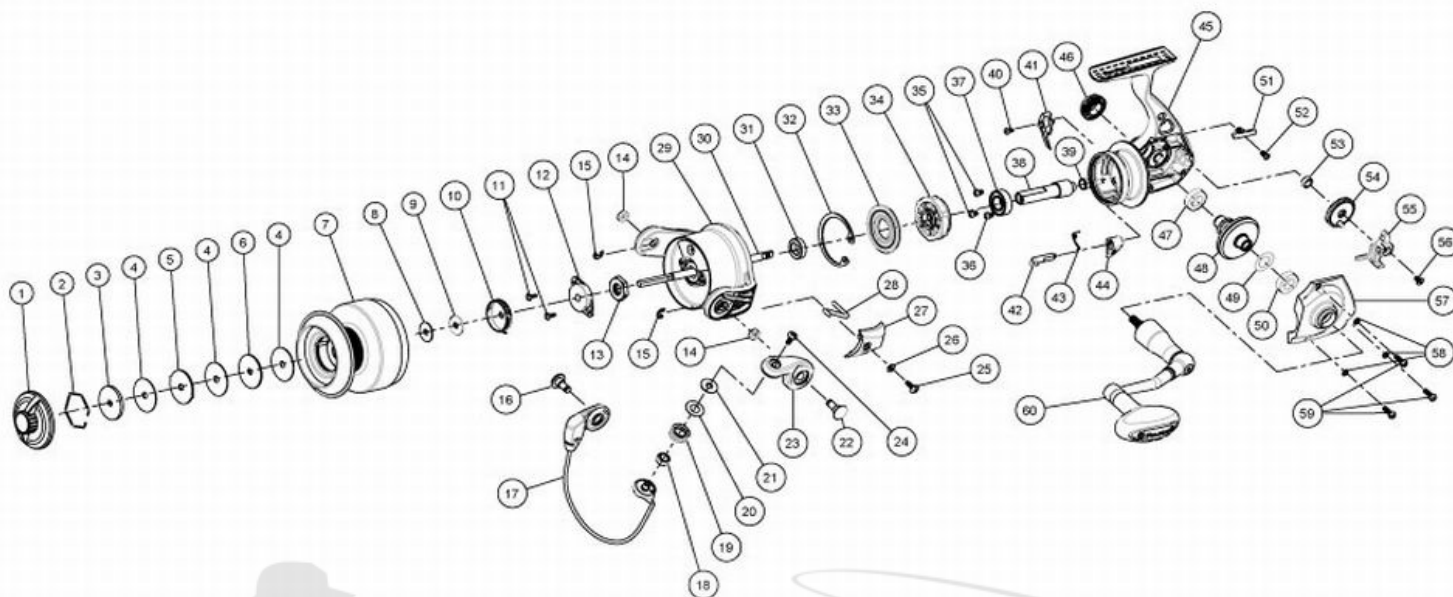


FIN-NOR®

LEGENDARY TACKLE SINCE 1933

Mega Lite ML5000



Fin-Nor MegaLite ML5000 Reel Part List

Key #	Description	Part No.	Key #	Description	Part No.
1	Drag Knob Assembly	ZP332-01	31	Bushing	ZP141-01
2	Retainer Ring	RQ038-01	32	Clutch Retainer Ring	TK060-01
3	Drag Washer "D"	SQ080-01	33	Clutch Seal Plate	TK166-01
4	Drag Washer "B"	RQ033-01	34	Clutch Unit	XP463-01
5	Drag Washer "A"	PG081-02	35	Pinion Bearing Screw "A"	TK057-01
6	Drag Washer "C"	RQ080-01	36	Pinion Bearing Screw "B"	TK057-11
7	Spool Assembly	SG320-03	37	Pinion Ball Bearing	UK028-01
8	Spool Adjust Washer	PG030-01	38	Pinion	RG011-01
9	Spool Washer	PG080-01	39	Pinion Bushing	SQ141-01
10	Spool Click Assembly	PG4114-01	40	Trip Bumper Screw	AT136-01
11	Rotor Nut Lock Screw	RQ094-01	41	Trip Bumper	XP119-01
12	Main Shaft Bushing	SQ214-01	42	Stopper Cam	TK090-01
13	Rotor Nut	TH006-01	43	Stopper Cam Spring	TK089-01
14	Rotor Bushing	PG158-01	44	Stopper Lever	RQ059-02
15	E-Clip	GH034-01	45	Body Assembly	XP301-03
16	Pin	QG042-02	46	Handle Screw Assembly	BG354-01
17	Bail Assembly	SG347-02	47	Body Ball Bearing	BL157-01
18	Line Roller Ball Bearing	GH202-01	48	Drive Gear Assembly	AT312-01
19	Line Roller	DH004-01	49	Drive Gear Adjust Washer	RG105-02
20	Line Roller Washer	DH102-01	50	Side Cover Ball Bearing	BL157-01
21	Line Roller Collar	CH102-01	51	O/S Slider Retainer	XP078-01
22	Pin	PG042-03	52	O/S Slider Retainer Screw	SK057-11
23	Arm Lever Assembly	RG307-06	53	O/S Gear Ball Bearing	EH158-01
24	Line Roller Screw	AQ108-01	54	O/S Gear	TQ053-01
25	Arm Lever Cover Screw	GU077-02	55	O/S Slider	TK025-01
26	Arm Lever Cover Washer	SQ142--01	56	Main Shaft Screw	RQ100-01
27	Arm Lever Cover	SG087-03	57	Side Cover	XP023-01
28	Kick Lever	SG019-01	58	Side Cover Screw Washer	RQ142-01
29	Rotor Assembly	SG309-03	59	Side Cover Screw	RQ057-01
30	Main Shaft	RG015-02	60	Handle Assembly	XP318-01