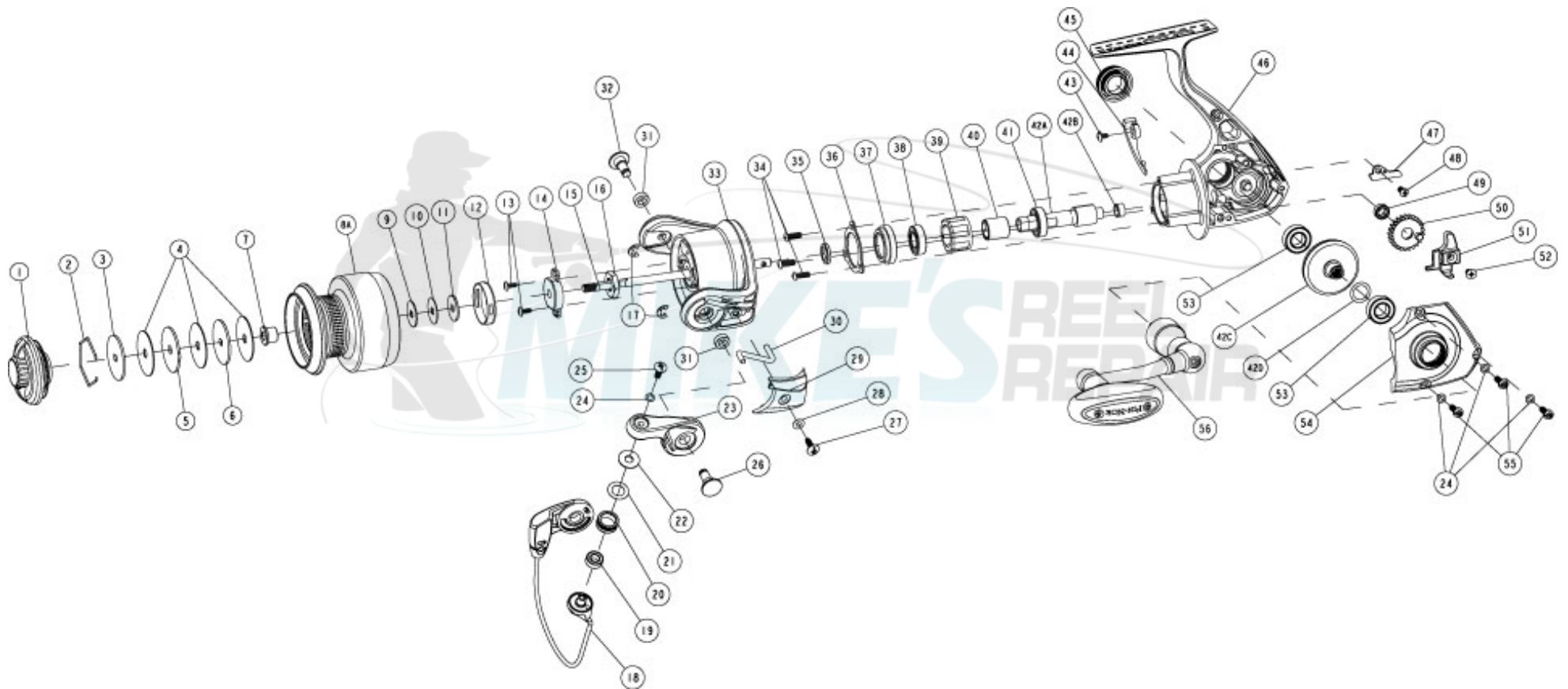


FIN-NOR®

LEGENDARY TACKLE SINCE 1933

Inshore IFS5000



FIN-NOR[®]

LEGENDARY TACKLE SINCE 1933

Inshore IFS5000

Fin-Nor Inshore IFS5000 Reel Part List

| Key # | Description | Qty | Part No. | Key # | Description | Qty | Part No. |
|-------|--------------------------|-----|------------|-------|------------------------------|-----|------------|
| 1 | Drag Knob Assembly | 1 | CAB332-01 | 28 | Arm Lever Cover Washer | 1 | SQ142-01 |
| 2 | Retainer Ring | 1 | RQ038-01 | 29 | Arm Lever Cover | 1 | SG087-01 |
| 3 | Drag Washer "D" | 1 | SQ080-01 | 30 | Kick Lever | 1 | SG019-01 |
| 4 | Drag Washer "B" | 3 | CO033-01 | 31 | Bushing | 2 | PG158-01 |
| 5 | Drag Washer "A" | 1 | PG081-02 | 32 | Pin | 1 | QG042-03 |
| 6 | Drag Washer "D" | 1 | RQ080-01 | 33 | Rotor | 1 | SG009-21 |
| 7 | Spool Bushing | 1 | RG141-01 | 34 | Screw | 3 | RQ057-01 |
| 8 | Spool Assembly Kit | 1 | DAB4321-01 | 35 | Pinion Washer | 1 | CAB110-01 |
| | 8A-Spool Assembly | 1 | N/A | 36 | Clutch Retainer | 1 | CAB060-01 |
| | 2-Retainer Ring | 1 | RQ038-01 | 37 | Ball Bearing Holder | 1 | CAB166-01 |
| | 3-Drag Washer "D" | 1 | SQ080-01 | 38 | Pinion Ball Bearing | 1 | FA117-01 |
| | 4-Drag Washer "B" | 3 | CO033-01 | 39 | Clutch Unit | 1 | CAB363-01 |
| | 5-Drag Washer "A" | 1 | PG081-02 | 40 | Clutch Sleeve | 1 | CAB139-01 |
| | 6-Drag Washer "D" | 1 | RQ080-01 | 41 | Pinion Ball Bearing | 1 | UK028-01 |
| | 7-Spool Bushing | 1 | RG141-01 | 42 | Gear Kit | 1 | CAB4011-01 |
| 9 | Spool Adjust Washer | 1 | PG030-01 | | 42A-Pinion | 1 | RG011-01 |
| 10 | Spool Adjust Washer | 1 | PG030-02 | | 42B-Pinion Bushing | 1 | SQ141-01 |
| 11 | Spool Washer | 1 | PG080-01 | | 42C-Drive Gear Assembly | 1 | AT312-01 |
| 12 | Spool Click Unit | 1 | PG4114-01 | | 42D-Drive Gear Adjust Washer | 1 | GU105-13 |
| 13 | Rotor Nut Lock Screw | 2 | RQ094-01 | 43 | Trip bumper screw | 1 | AAB057-01 |
| 14 | Main Shaft Bushing | 1 | SQ214-01 | 44 | Trip bumper | 1 | CAB119-01 |
| 15 | Main Shaft | 1 | CAB015-01 | 45 | Handle Screw | 1 | BG054-02 |
| 16 | Rotor Nut | 1 | TH006-01 | 46 | Body Assembly | 1 | CAB001-02 |
| 17 | E-Clip | 2 | GH034-01 | 47 | O/S Slider Retainer | 1 | XP078-01 |
| 18 | Bail Assembly | 1 | DAB347-01 | 48 | O/S Slider Retainer Screw | 1 | SK057-01 |
| 19 | Line Roller Ball Bearing | 1 | GH202-01 | 49 | O/S Gear Bushing | 1 | BT160-01 |
| 20 | Line Roller | 1 | DH004-01 | 50 | O/S Gear | 1 | TQ053-51 |
| 21 | Line Roller Washer | 1 | DH102-01 | 51 | O/S Slider | 1 | TK025-01 |
| 22 | Line Roller Collar | 1 | CH102-01 | 52 | Main Shaft Screw | 1 | RQ100-01 |
| 23 | Arm Lever | 1 | RG007-21 | 53 | Side Cover Ball Bearing | 2 | BL157-01 |
| 24 | Screw Washer | 4 | RQ142-01 | 54 | Side Cover | 1 | CAB023-01 |
| 25 | Line Roller Screw | 1 | AQ108-01 | 55 | Side Cover Screw | 3 | RQ057-02 |
| 26 | Pin | 1 | PG042-06 | 56 | Handle Assembly | 1 | XP318-02 |
| 27 | Arm Lever Cover Screw | 1 | GU077-03 | | | | |