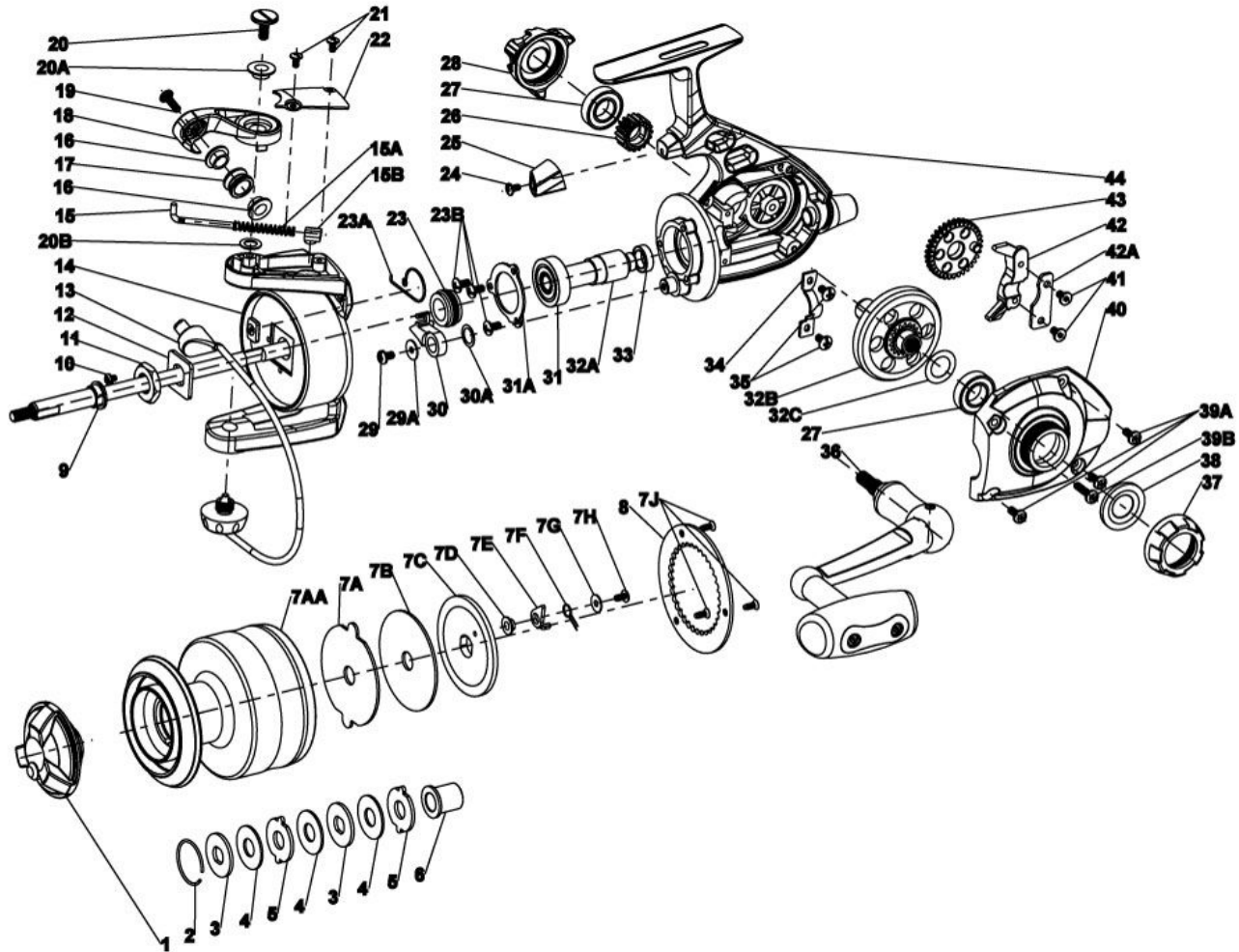


FIN-NOR
LEGENDARY TACKLE SINCE 1933
Offshore OFS45

For Parts and Service
Call 1-888-404-1119
www.mikesreelrepair.com



FIN-NOR®

LEGENDARY TACKLE SINCE 1933

Offshore OFS45

Fin-Nor Offshore OFS45 Spinning Reel Part List

Key #	Description	Part No.	Key #	Description	Part No.
1	DRAG KNOB ASSEMBLY	ZT332-01	20	SCREW - LINE SLIDER	KT106-01
2	RETAINER, SPOOL, TOP	HT038-01	21	SPRING SHAFT	YT031-01
3	DRAG WASHER, KEYED - SHAFT	HT080-01	21A	BAIL ARM SPRING	KT044-01
4	DRAG FRICTION WASHER	HT030-01	21B	SPRING HOLDER	KT020-01
5	DRAG WASHER, KEYED - SPOOL	HT081-01	22	ROTOR COVER	YT087-01
7	SPOOL SLEEVE	ZT160-01	24	SCREW - ROTOR COVER (2)	KT085-01
8	SPOOL - ASSEMBLY KIT (includes):	YT4321-01	25	ROTOR	YT009-01
	2 - RETAINER, SPOOL, TOP	N/A	26	CENTER SHAFT ASSY.	YT315-01
	3 - DRAG WASHER, KEYED - SHAFT (2)	N/A	27	SCREW - ANTI - REVERSE PAWL	YT111-01
	4 - DRAG FRICTION WASHER (3)	N/A	27A	ANTI - REVERSE PAWL RETAINER	KT099-01
	5 - DRAG WASHER, KEYED - SPOOL (2)	N/A	28	ANTI - REVERSE PAWL	YT063-01
	7 - SPOOL SLEEVE	N/A	28A	WASHER - ANTI - REVERSE PAWL	HT098-01
	8AA - SPOOL	N/A	29	PINION BEARING	KT157-01
	8A - DRAG WASHER, KEYED SPOOL - REAR	N/A	29A	RETAINER PLATE	YT118-01
	8B - DRAG FRICTION WASHER	N/A	30	ANTI - REVERSE SPRING SPACER	KT091-01
	8C - DRAG, WASHER, KEYED - SHAFT REAR	N/A	30A	ANTI - REVERSE ACTUATOR SPRING	YT089-01
	8D - BUSHING - CLICKER	N/A	30B	SCREW - RETAINER PLATE (3)	HT123-01
	8E - SPOOL CLICKER	N/A	31	GEAR KIT (includes):	YT4011-01
	8F - CLICK SPRING	N/A		31A - PINION	N/A
	8G - CLICKER WASHER	N/A		31B - CRANK GEAR ASSEMBLY	N/A
	8H - SCREW - CLICKER	N/A		31C - DRIVE GEAR ADJUST WASHER	N/A
	8J - SCREW - RETAINER - DRAG (REAR) (3)	N/A	32	BAIL TRIP	YT019-01
	9 - SPOOL RETAINER - BOTTOM	N/A	33	SCREW - BAIL TRIP	KT085-01
8A	DRAG WASHER, KEYED SPOOL - REAR	YT081-02	35	BODY ASSEMBLY	YT301-01
8B	DRAG FRICTION WASHER	YT080-02	37	O/S GEAR	YT053-01
8C	DRAG, WASHER, KEYED - SHAFT REAR	YT039-01	37A	SPUR GEAR	YT055-01
8D	BUSHING - CLICKER	HT224-01	38	O/S SLIDER	YT025-01
8E	SPOOL CLICKER	HT103-01	38A	O/S SLIDER RETAINER	YT078-01
8F	CLICK SPRING	HT068-01	39	MAIN SHAFT SCREW (2)	KT111-01
8G	CLICKER WASHER	KT076-01	40	BALL BEARING (2)	YT157-01
8H	SCREW - CLICKER	KT085-01	41	BODY COVER	YT023-01
8J	SCREW - RETAINER - DRAG (REAR) (3)	KT228-01	41A	SEAL CRANK HANDLE	YT139-01
9	SPOOL RETAINER - BOTTOM	YT225-01	41B	COLLAR - CRANK	YT226-01
10	SCREW - ROTOR NUT LOCK	HT094-01	42	BODY COVER SCREW KIT (includes):	YT4057-01
11	ROTOR WASHER	KT065-01		42A - SCREW - BODY COVER (1)	N/A
12	ROTOR NUT	KT006-01		42B - SCREW - BODY COVER (2)	N/A
13	SCREW - BAIL ARM	KT051-01		42C - SCREW - BODY COVER (1)	N/A
13A	BUSHING - BAIL ARM	N/A	43	CRANK HANDLE ASSEMBLY	HT318-01
13B	WASHER - BAIL ARM	N/A	44	BEARING CAP	YT073-01
14	BAIL ASSEMBLY	YT347-01	45	PINION BEARING	KT158-01
15	BUSHING - LINE ROLLER	KT202-01	46	BEARING RETAINER	YT040-01
16	LINE ROLLER	KT004-02	47	SCREW - RETAINER (2)	HT123-01
19	BAIL ARM	YT007-01			

For Parts and Service
 Call 1-888-404-1119
www.mikesreelrepair.com