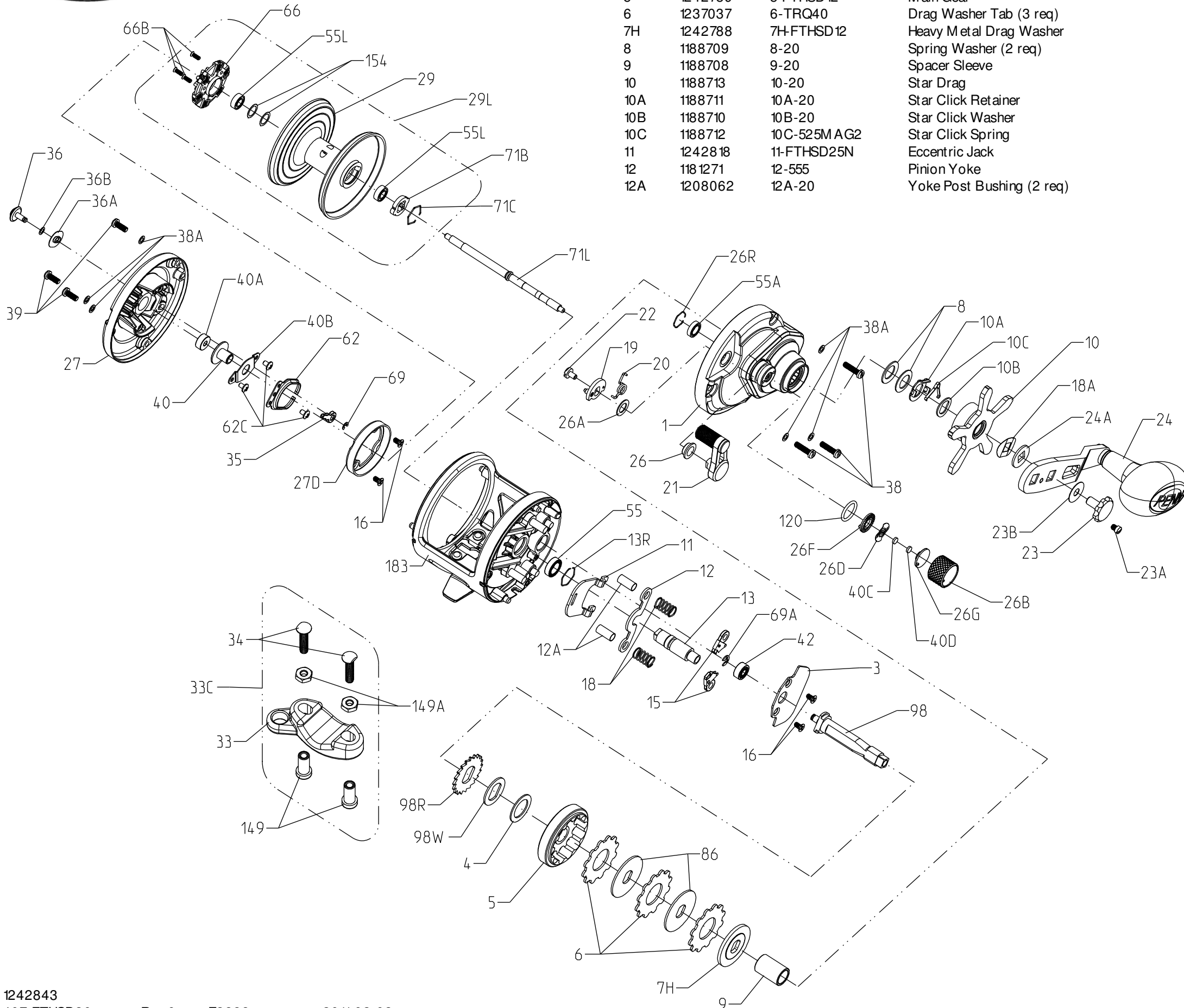




PARTS LIST FOR MODEL FATHOM SD 30
REEL PART NO. 1238445



Key No.	Part No.	PENN Style No.	Description
1	1242820	1-FTHSD30	Right Side Plate
3	1242817	3-FTHSD25N	Bridge
4	1180755	4-60	Drag Washer
5	1242789	5-FTHSD12	Main Gear
6	1237037	6-TRQ40	Drag Washer Tab (3 req)
7H	1242788	7H-FTHSD12	Heavy Metal Drag Washer
8	1188709	8-20	Spring Washer (2 req)
9	1188708	9-20	Spacer Sleeve
10	1188713	10-20	Star Drag
10A	1188711	10A-20	Star Click Retainer
10B	1188710	10B-20	Star Click Washer
10C	1188712	10C-525M AG2	Star Click Spring
11	1242818	11-FTHSD25N	Eccentric Jack
12	1181271	12-555	Pinion Yoke
12A	1208062	12A-20	Yoke Post Bushing (2 req)

Key No.	Part No.	PENN Style No.	Description
13	1242790	13-FTHSD12	Pinion
13R	1229364	13R-TRQ40	Retaining Ring
15	1188675	15-20	Anti Reverse Dog (2 req)
16	1188686	16-20	Bridge Screw (4 req)
18	1188688	18-20	Pinion Yoke Spring (2 req)
18A	1188714	18A-20	Keyed Spring Washer
19	1188691	19-20	Eccentric
20	1242806	20-FTHSD12	Eccentric Spring
21	1242831	21-FTHSD25N	Eccentric Lever
22	1188690	22-20	Eccentric Screw
23	1208117	23-FTH20LW	Handle Screw
23A	1188717	23A-20	Handle Lock Screw
23B	1207784	23B-20	Handle Screw Washer
24	1242787	24-FTHSD12	Handle Assembly
24A	1188715	24A-20	Handle Thrust Washer
26	1188692	26-20	Bushing
26A	1242792	26A-FTHSD12	Washer
26B	1208114	26B-FTH20LW	Spool Tension Control Cap
26D	1125769	26D-525M AG2	Click Spring
26F	1125768	26F-525M AG2	Click Plate A
26G	1125772	26G-525M AG2	Click Plate B
26R	1214654	26R-525M AG2	Ring Retaining
27	1242826	27-FTHSD40	Left Side Plate
27D	1242794	27D-FTHSD12	Centrifugal Brake Path
29	1242822	29-FTHSD30	Spool
29L	1242838	29L-FTHSD30	Spool Assembly
33	1182754	33-113	Rod Clamp
33C	1229936	33C-TRQ40	Rod Clamp Kit
34	1182788	34-45	Screw (2 req)
35	1188656	35-20	Click Tongue
36	1242819	36-FTHSD25N	Click Button
36A	1208113	36A-FTH20LW	Click Washer
36B	1188651	36B-20	Click PVC Washer
38	1188698	38-20	Screw (3 req)
38A	1188649	38A-20	Flat Washer (6 req)
39	1188638	39-20	Screw (3 req)
40	1230004	40-TRQ40	Bushing L.S. Spool
40A	1242804	40A-FTHSD12	Bearing
40B	1242805	40B-FTHSD12	Protector Bearing
40C	1208115	40C-525M AG2	Washer, Metal Thrust
40D	1125771	40D-525M AG2	Washer, Rubber Thrust
42	1188661	40-20	Ball Bearing
55	1214665	55-525M AG2	Ball Bearing
55A	1214666	55A-525M AG2	Ball Bearing 6x10x2.5
55L	1192031	55L-965	Ball Bearing (2 req)
62	1188664	62-20	Click Spring
62C	1188654	62C-20	Screw (3 req)
66	1242797	66-FTHSD12	Centrifugal Brake
66B	1242798	66B-FTHSD12	Screw (3 req)
69	1188657	69-20	Retainer
69A	1188659	69A-20	Retainer
71B	1230226	71B-TRQ40	Spool Driver
71C	1230227	71C-TRQ40	Retaining Ring
71L	1242823	71L-FTHSD30	Spool Shaft
86	1184251	86-49L	Drag Washer Keyed (2 req)
98	1188700	98-20	Main Gear Shaft
98R	1242800	98R-FTHSD12	Anti Reverse Ratchet
98W	1242801	98W-FTHSD12	Ratchet Thrust Washer
120	1184522	120113H	O-ring
149	1184702	149-45	Nut, Rod Clamp (2 req)
149A	1184706	149-200	Nut, Hex (2 req)
154	1242803	154-FTHSD12	Shim (As Needed)
183	1242824	183-FTHSD30	Frame Assembly