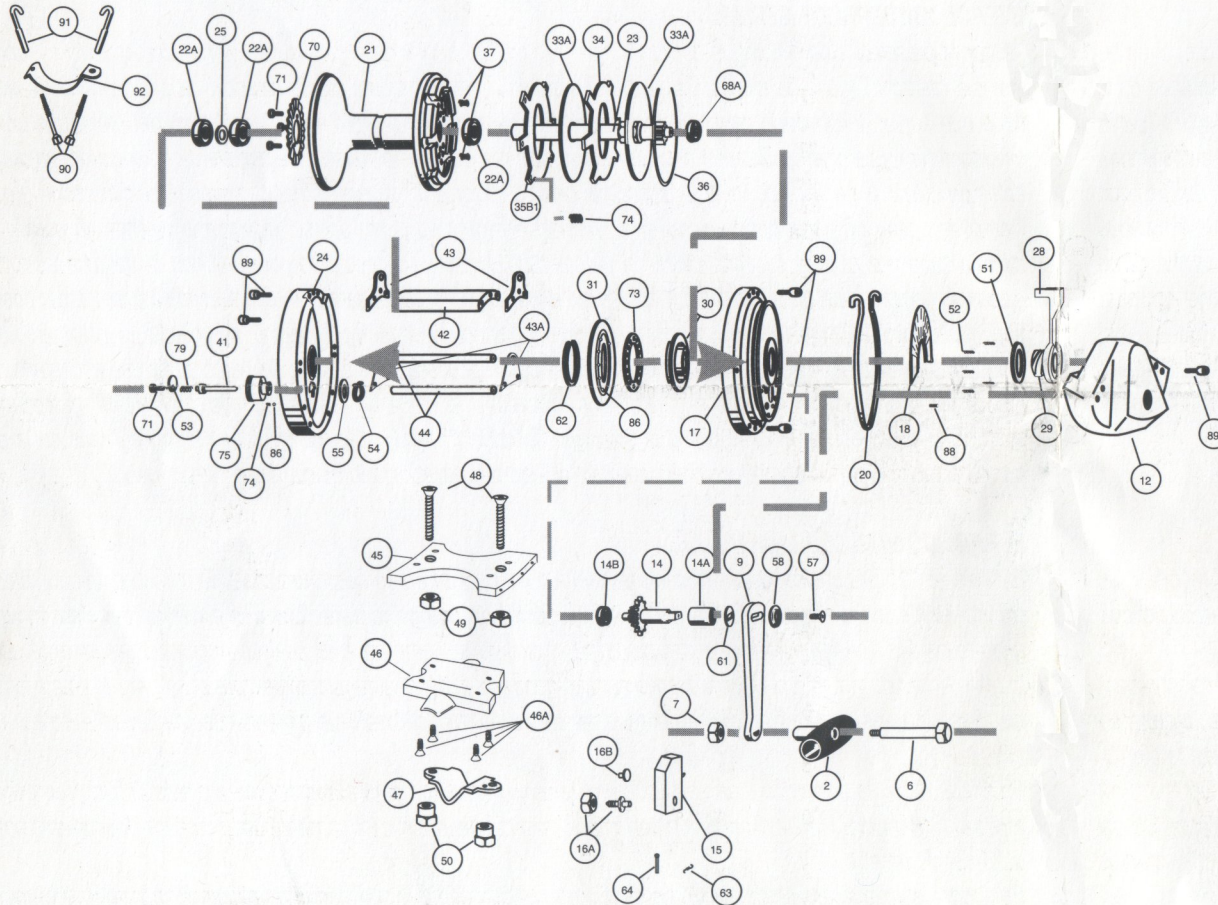


EVEROL SPECIAL

EXPLODED PARTS VIEW

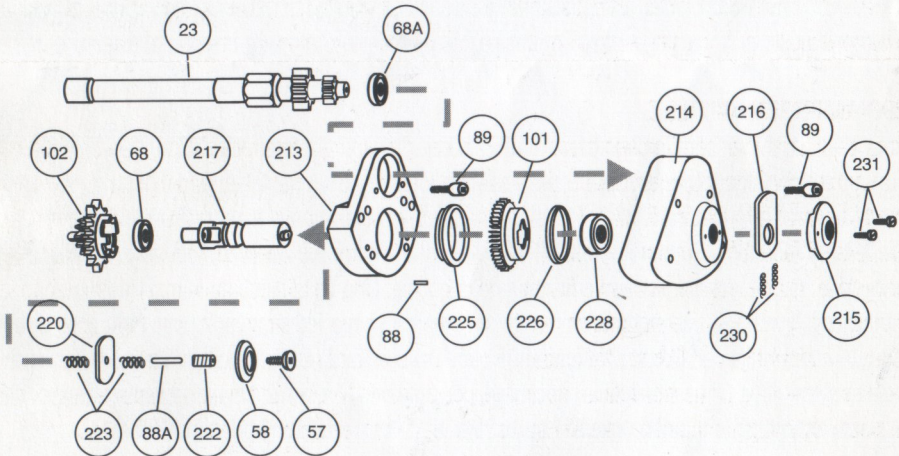


PARTS LIST

1	Handle assembly	61	Slotted washer
2	Handle knob		(2½/0 4/0 6/0 only)
6	Handle shaft	62	Clutch bearing-lock ring
7	Handle nut	63	Pawl spring
9	Handle slide plate	64	Self tapping screw
12	Gear huosing	68a	Ball bearing
14	Main gear	70	Alarm striker plate
14a	Main gear bearing	71	Alarm screw
14b	Main gear bearing	73	Ball spacer ring
15	Anti reverse pawl	74	Spring
16a	Pawl shaft	75	Alarm selector
16b	Pawl pin	79	Striker springs
17	Right side plate	86	Ball
18	Clutch adjustable dial	87	Screw
20	Adjustable limit stop	88	Centering pins
21	Spool	89	Allen screw
22a	Ball bearing	90 91 92	Rod brace assembly
23a	Pinion gear		
24	Left side plate		
25	Ball bearin washer		
28	Clutch adjusting lever		
29	Male screw		
30	Female screw		
31	Clutch race plate		
33a	Liningless disk		
34	Duoble lined winged disk		
35b1	Single lined winged disk		
36	Internal loc-spring ring		
37	Clutch taper spring		
41	Alarm striker		
42	Upper frame post		
43	Harness lug		
43a	External harness lug		
44	Cilindrical frame post		
45	Reel stand frame post		
46	Reel stand		
47	Rod clamp		
48	Clamp screw		
49	Nut		
50	Collar nut		
51	Male screw washer		
52	Pressure Washer spring		
53	Alarm selector cover		
54	Spring-lock ring		
55	Alarm selector washer		
57	Handle screw		
58	Handle washer		

EVEROL TWO SPEED SERIES

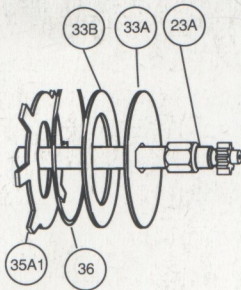
EXPLODED PARTS VIEW



PARTS LIST

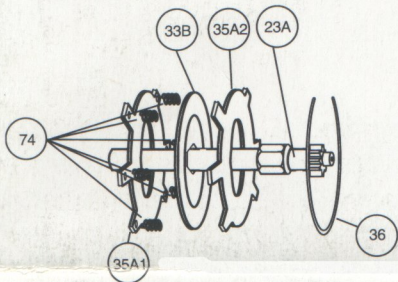
23a	Pinion gear	213	Lower gear housing	223	Key springs
57	Handle screw	214	Upper gear housing	224	Cover screw
58	Handle washer	215	Button cover	225	Main gear bearing
68	Ball bearing	216	Change speed button	226	Main gear bearing
88	Centering pins	217	Change speed shaft	228	Ball bearing
89	Allen screw	220	Key	230	Button springs
101	High speed main gear	221	Key shaft		
102	Low speed main gear	222	Internal screw		

PARTS LIST

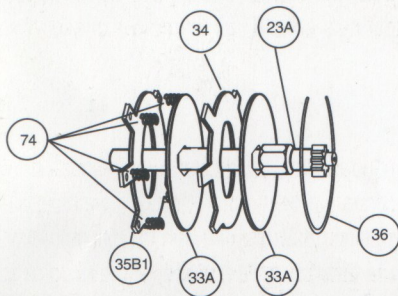


DRAG SYSTEM 2 1/2 / 0

- 23A Pinion shaft
- 33A Liningless disk
- 33B Double lined disk
- 34 Double lined winged disk
- 35A1 Liningless winged disk (with springs)
- 35A2 Liningless winged disk
- 35B1 Single lined winged disk
- 36 Internal look-spring ring
- 74 Springs



DRAG SYSTEM 4/0 - 6/0 7 1/2/0 - 9/0



DRAG SYSTEM 12/0 - 14/0