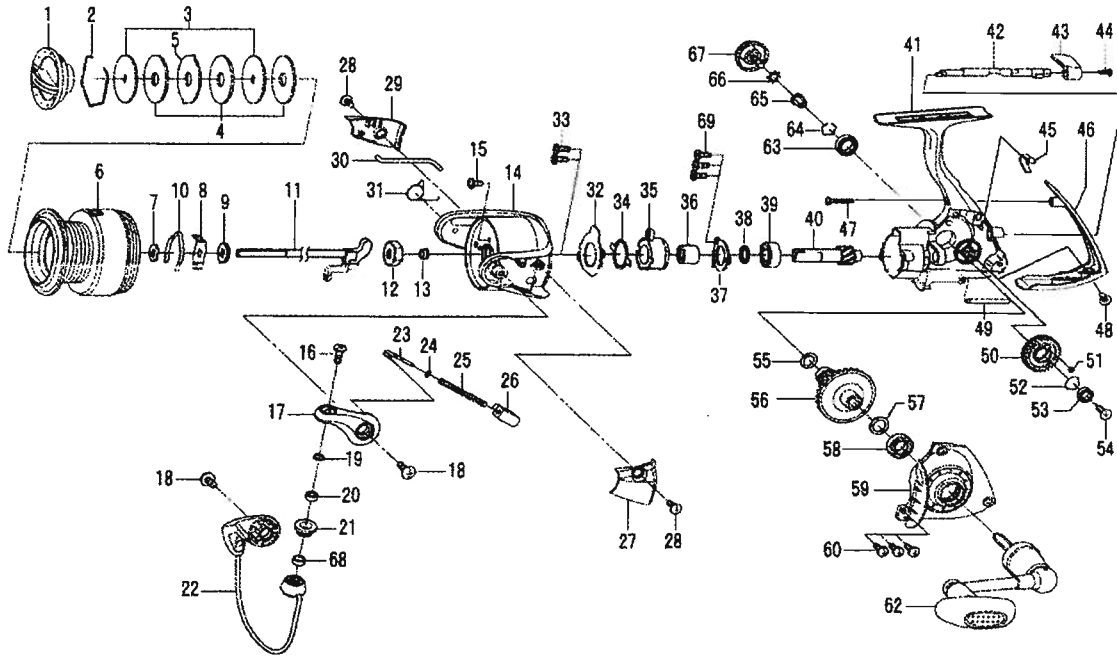


SPINNING REEL

EXCELER 3000



Key No.	Parts No.	Parts Name
1	G70-0801	DRAG KNOB
2	F88-4001	DRAG WASHER RET
3	G70-0601	KEY WASHER
4	F69-1001	DRAG WASHER
5	G70-0701	EARED WASHER
2-6	G71-6901	SPOOL
2-6	G77-5901	SPOOL (EXTRA)
7	E46-7101	SPOOL WASHER
8	G70-0001	CLICK LEAF SPRING HOLDER
9	E24-6101	CLICK LEAF SPRING WASHER
10	F70-4901	SPOOL CLICK LEAF SPRING
11	G71-6501	MAIN SHAFT
12	G69-9801	ROTOR NUT
13	G69-9701	ROTOR NUT COLLAR
14	G62-8309	ROTOR
15	G62-7701	ROTOR NUT LOCK SCREW
16	G19-5602	LINE ROLLER SCREW
17	G61-2310	BAIL ARM
18	G20-5001	BAIL ARM SCREW
19	F89-7101	LINE ROLLER WASHER
20	G28-1601	BALL BEARING A
21	F62-5001	LINE ROLLER
22	G71-6701	BAIL
23	G47-1801	BAIL SPRING SHAFT
24	E31-3901	BAIL SPRING WASHER
25	G47-1701	BAIL SPRING
26	G61-2101	BAIL SPRING HOLDER
27	G62-8401	BAIL SPRING COVER
28	G27-0801	BAIL SPRING COVER SCREW
29	G62-8701	BAIL TRIP LEVER COVER
30	G62-8601	BAIL TRIP LEVER
31	G61-3101	BAIL TRIP LEVER SPRING
32	G61-1201	ROLLER CLUTCH RET
33	G55-7101	ROLLER CLUTCH RET SCREW
34	G46-5401	CLUTCH CAM RET

Key No.	Parts No.	Parts Name
35	G53-9201	ROLLER CLUTCH
36	G71-6201	SPACING SLEEVE
37	G46-7402	BEARING RET
38	375-8509	BEARING RET WASHER
39	G53-5101	BALL BEARING B
40	G69-8901	PINION GEAR
41	G69-8201	BODY
42	G69-8601	A/R CAM
43	G69-9402	A/R LEVER
44	G69-9501	A/R LEVER SCREW
45	G72-6201	A/R CAM SPRING
46	G69-9301	REAR COVER
47	E11-9602	REAR COVER SCREW A
48	G33-2702	REAR COVER SCREW B
49	G61-0802	STABILIZER BAR
50	G63-2101	OSC GEAR
51	G46-6001	O RING A
52	G46-6100	OSC GEAR WASHER
53	F05-5602	BALL BEARING C
54	F20-6902	OSC GEAR SCREW
55	G67-0501	O RING B
56	G69-9001	DRIVE GEAR
57	375-8500	DRIVE GEAR WASHER
58	G46-7302	BALL BEARING D
59	G69-9101	SIDE COVER
60	G33-2902	SIDE COVER SCREW
62	G69-9901	HANDLE
63	F01-6401	BALL BEARING E
64	G47-2401	BALL BEARING RET
65	F72-1001	HANDLE COLLAR
66	160-8101	LOCK WASHER
67	G70-0201	HANDLE SCREW
68	F70-1801	LINE ROLLER COLLAR
69	G55-7101	BEARING RET SCREW