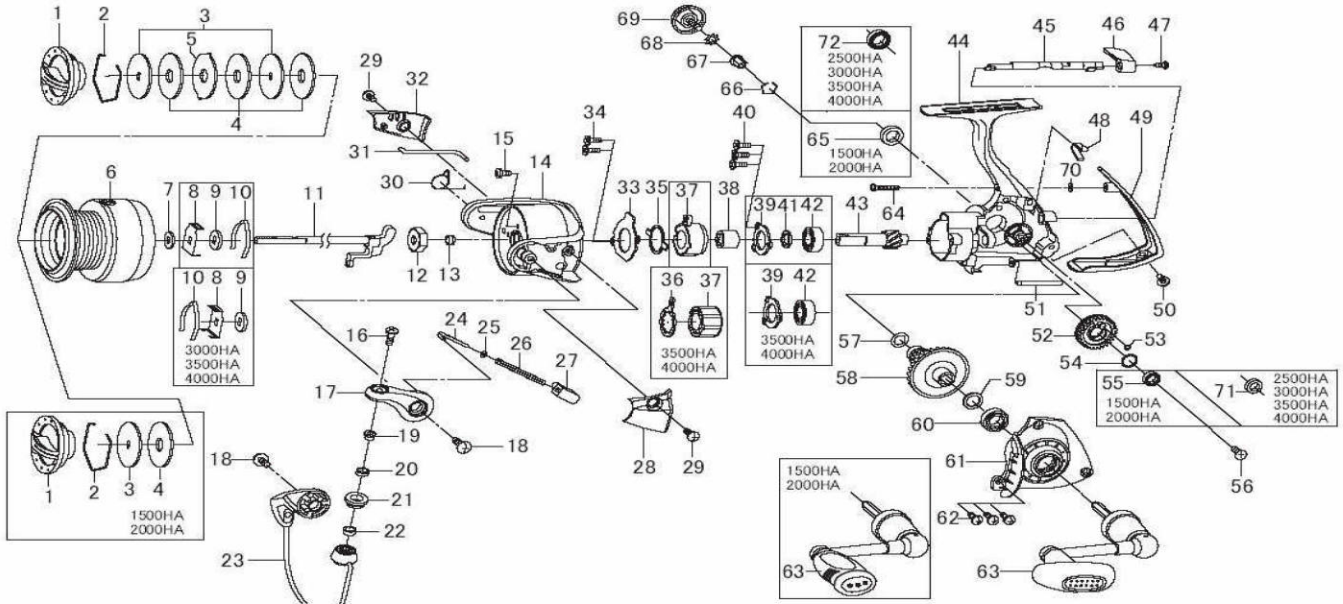




Please order by parts number, not key number
 Bitte, Best.-Nr. angeben (Nicht "Key" -Nr.)
 Veuillez indiquer le numéro de la pièce (Non "Key" No.)

SPINNING REEL EXCELER 1500HA/2000HA/2500HA/3000HA/3500HA/4000HA



Key No.	1500HA Parts No.	Parts Name	2000HA Parts No.	2500HA Parts No.	3000HA Parts No.	3500HA Parts No.	4000HA Parts No.
1	H52-3201	Drag Knob	H52-3201	H52-4101	H52-4101	H52-4101	H52-4101
2	F88-4001	Drag Washer Retainer	F88-4001	F88-4001	F88-4001	F88-4001	F88-4001
3	G70-0601	Key Washer	G70-0601	G70-0601	G70-0601	G70-0601	G70-0601
4	F69-1001	Drag Washer	F69-1001	F69-1001	F69-1001	F69-1001	F69-1001
5	-	Eared Washer	-	G70-0701	G70-0701	G70-0701	G70-0701
6	H52-6801	Spool Assembly	H52-2901	H52-3401	H52-7101	H52-7101	H52-3801
7	E46-7101	Washer (A)	E46-7101	E46-7101	E46-7101	E46-7101	E46-7101
8	G70-0001	Click Leaf Spring Holder	G70-0001	G70-0001	G70-0001	G74-3901	G74-3901
9	E24-6101	Washer (B)	E24-6101	E24-6101	E24-6101	E24-6101	E24-6101
10	F70-4901	Spool Click Leaf Spring	F70-4901	F70-4901	F70-4901	F70-9002	F70-9002
11	G72-4401	Main Shaft	G72-4401	G69-8701	G71-6501	G74-2701	G74-2701
12	G69-9801	Rotor Nut	G69-9801	G69-9801	G69-9801	G74-3801	G74-3801
13	G69-9701	Collar (A)	G69-9701	G69-9701	G69-9701	G75-1201	H52-3801
14	G63-0506	Rotor	G63-0506	G61-2008	G62-8310	G64-6108	G64-6108
15	G62-7701	Screw (A)	G62-7701	G62-7701	G62-7701	G62-7701	G62-7701
16	G19-5602	Screw (B)	G19-5602	G19-5602	G19-5602	G19-5602	G19-5602
17	G61-2307	Bail Arm	G61-2307	G61-2307	G61-2307	G61-2307	G61-2307
18	G20-5001	Screw (C)	G20-5001	G20-5001	G20-5001	G20-5001	G20-5001
19	G15-2502	Collar (B)	G15-2502	G15-2502	G15-2502	G15-2502	G15-2502
20	G87-4301	Collar (C)	G87-4301	G87-4301	G87-4301	G87-4301	G87-4301
21	F62-5001	Line Roller	F62-5001	F62-5001	F62-5001	F62-5001	F62-5001
22	G87-4201	Collar (D)	G87-4201	G87-4201	G87-4201	G87-4201	G87-4201
23	G72-5001	Bail Assembly	G72-5001	G70-3401	G71-6701	G74-3601	G74-3601
24	G47-1805	Bail Spring Shaft	G47-1805	G47-1805	G47-1805	G29-8201	G29-8201
25	E31-3901	Washer (C)	E31-3901	E31-3901	E31-3901	E31-3901	E31-3901
26	G47-1701	Bail Spring	G47-1701	G47-1701	G47-1701	G64-6201	G64-6201
27	G21-2101	Bail Spring Holder	G21-2101	G61-2501	G62-8401	G64-6301	G61-2103
28	G63-0601	Cover (A)	G63-0601	G61-2501	G62-8401	G64-6301	G64-6301
29	G27-0801	Screw (D)	G27-0801	G27-0801	G27-0801	G27-0801	G27-0801
30	G61-3101	Bail Trip Lever Spring	G61-3101	G61-3101	G61-3101	G61-3101	G61-3101
31	G63-0801	Bail Trip Lever	G63-0801	G61-3001	G62-8601	G64-6501	G64-6501
32	G63-0901	Cover (B)	G63-0901	G61-3201	G62-8701	G64-6601	G64-6601
33	G61-1201	Roller Clutch Retainer	G61-1201	G61-1201	G61-1201	G57-7401	G57-7401
34	G55-7101	Screw (F)	G55-7101	G55-7101	G55-7101	G55-7101	G55-7101
35	G46-5401	Clutch Cam Retainer	G46-5401	G46-5401	G46-5401	F64-1501	F64-1501
36	-	Clutch Cam	-	-	-	F64-1401	F64-1401
37	G53-9201	Roller Clutch	G53-9201	G53-9201	G53-9201	G74-3001	G74-3001
38	G71-6201	Spacing Sleeve	G71-6201	G71-6201	G71-6201	F64-1401	F64-1401
39	G46-7402	Bearing Retainer (A)	G46-7402	G46-7402	G46-7402	E13-4509	E13-4509
40	G55-7101	Screw (F)	G55-7101	G55-7101	G55-7101	G31-4501	G31-4501
41	375-8509	Washer (D)	375-8509	375-8509	375-8509	-	-
42	G53-5101	Ball Bearing (A)	G53-5101	G53-5101	G53-5101	G52-2801	G52-2801
43	H52-5501	Pinion Gear	H52-5501	H22-1501	H22-1501	H21-9701	H21-9701
44	G78-6301	Body	G78-6301	G79-1501	G79-1501	H54-4001	H54-4001
45	G69-8601	Anti-Reverse Cam	G69-8601	G69-8601	G69-8601	G74-2601	G74-2601
46	G69-9403	Anti-Reverse Lever	G69-9403	G69-9403	G69-9403	G69-9403	G69-9403
47	G69-9501	Screw (G)	G69-9501	G69-9501	G69-9501	G69-9501	G69-9501
48	G72-6201	Anti-Reverse Cam Spring	G72-6201	G72-6201	G72-6201	G74-4201	G74-4201
49	G72-4901	Rear Cover	G72-4901	G69-9301	G69-9301	G74-3501	G74-3501
50	G33-2704	Screw (H)	G33-2704	G33-2704	G33-2704	G33-2704	G33-2704
51	G62-9902	Stabilizer Bar	G62-9902	G61-0802	G61-0802	G64-4702	G64-4702
52	H54-0901	Oscillating Gear	H54-0901	H22-1301	H21-9101	H21-9601	H21-9601
53	G46-6001	"O" Ring (A)	G46-6001	G46-6001	G46-6001	B85-3101	B85-3101
54	G46-6100	Washer (E)	G46-6100	G46-6100	G46-6100	G52-2100	G52-2100
55	G46-6201	Ball Bearing (B)	G46-6201	-	-	-	-
56	F20-6902	Screw (I)	F20-6902	F20-6902	F20-6902	B70-3401	B70-3401
57	G67-0501	"O" Ring (B)	G67-0501	G67-0501	G67-0501	G64-5301	G64-5301
58	H22-1601	Drive Gear	H22-1601	H22-1601	H22-1601	H21-9801	H21-9801
59	375-8500	Washer (F)	375-8500	375-8500	375-8500	373-7800	373-7800
60	G46-7301	Ball Bearing (C)	G46-7301	G46-7301	G46-7301	G52-3403	G52-3403
61	G78-6401	Side Cover	G78-6401	G79-1601	G79-1601	G80-7801	G80-7801
62	G33-2904	Screw (J)	G33-2904	G70-0201	G70-0201	G74-4201	G74-4201
63	H52-2801	Handle Assembly	H52-2801	G81-8102	G81-8102	H523-701	H523-701
64	E11-9602	Screw (K)	E11-9602	E11-9602	E11-9602	E11-9602	E11-9602
65	G72-0401	Collar (E)	G72-0401	-	-	-	-
66	G47-2401	Bearing Retainer (B)	G47-2401	G47-2401	G47-2401	G52-5101	G52-5101
67	F72-1001	Collar (F)	F72-1001	F72-1001	F72-1001	F72-1202	F72-1202
68	160-8101	Washer (G)	160-8101	160-8101	160-8101	160-8101	160-8101
69	G70-0201	Handle Screw	G70-0201	G70-0201	G70-0201	G74-4201	G74-4201
70	F03-7400	Washer (H)	F03-7400	F03-7400	F03-7400	F03-7400	F03-7400
71	-	Collar (G)	-	H65-5101	H65-5101	G09-4201	G09-4201
72	-	Ball Bearing (D)	-	G52-2701	G52-2701	G43-1002	G43-1002