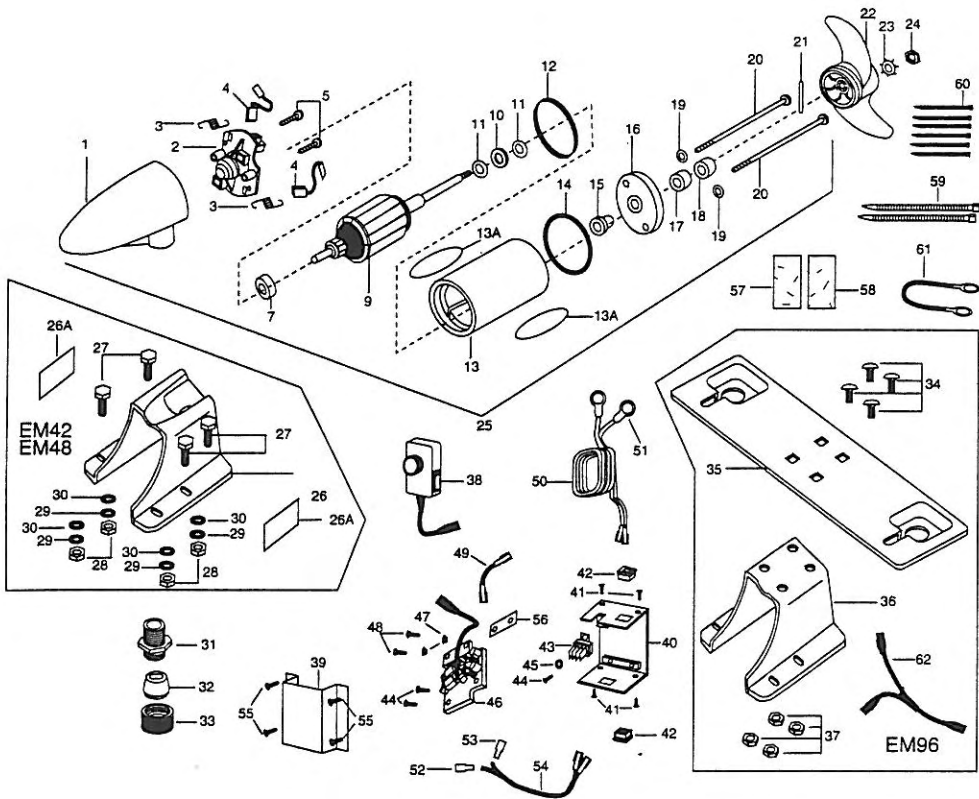


EM42, EM 48, EM 96



ITEM	NUMBER	DESCRIPTION	ITEM	NUMBER	DESCRIPTION
1	406-025	Front Endbell	31	238-2500	Bolt- Motor Fitting
2	406-403	Brush Plate Assembly	32	238-2900	Grommet
3	406-082	Brush Spring (2 req'd)	33	995-0339	Cap- Motor Fitting
4	406-071	Brush Assembly (2 req'd)	34	995-0351	Carriage Bolt (4 req'd)-EM96 Only
5	406-342	Brush Plate Screw (2 req'd)	35	238-1915	Bracket- Twin Motor EM96 Only
6	405-300	E-Ring	36	995-0380	Mount- Twin Motor EM96 Only
7	406-010	Ball Bearing	37	990-8233	Nut- Nylock (4 req'd)-EM96 Only
9	406-209	Armature Assembly EM42	38	299-0210	Hand Control Assembly
9	406-210	Armature Assembly EM48, EM96		299-0200	Control Mod. Ass'y-12V
10	406-170	Thrust Washer- Steel (as req'd)		299-0201	Cntrl Mod. Ass'y-24V (EM96-2 req'd)
11	405-171	Thrust Washer- Nylatron (as req'd)	39	238-6590	Control Module Cover
12	406-490	Gasket	40	238-6592	Control Module Base
13	409-253	Center Section w/ Magnets	41	237-3426	Screw- Housing (4 req'd)
13A	238-5629	Decal- Motor	42	230-2920	Strain Relief (2 req'd)
14	406-470	O-Ring (2 req'd)	43	238-4007	Relay- Motor Disconnect
15	406-600	Flange Bearing	44	237-3425	Screw- Mounting (3 req'd)
16	406-033	Rear Endbell	45	237-1716	Lockwasher-Relay
17	406-461	Seal	46	238-4015	Control Board EM42
18	406-471	Seal- cup	46	238-4016	Control Board EM48, EM96
19	405-462	O-Ring- Thru Bolt (2 req'd)	47	230-1710	Insulated Washer (2 req'd)
20	406-353	Thru Bolt (2 req'd)	48	230-1310	Screw- Mounting (2 req'd)
21	209-2600	Pin- Drive	49	202-0310	Wire-Jumper 3"
22	209-1130	Propeller	50	209-0600	Leadwire Assembly- 6' -10 ga
23	205-1700	Lockwasher	51	209-0700	Ring Terminals (2 req'd)
24	238-3105	Nut- Prop Nylock	52	238-0300	Insulated Connector- Male
25	238-7000	Motor Assembly EM42	53	238-0301	Insulated Connector- Female
25	238-7001	Motor Assembly EM48, EM96	54	238-0616	Wire Assembly- 18" -10 ga
26	238-1905	Mount-EM42, EM48	55	237-3427	Screw- Boat Mounting (4 req'd)
26A	238-5605	Decal-Mount (2 req'd)-EM42	56	236-5105	Insulating Pad
26A	238-5606	Decal-Mount (2 req'd)-EM48	57	995-0950	Velcro® Hook
26A	238-5611	Decal-Mount (2 req'd)-EM96	58	995-0953	Velcro® Loop
27	238-3501	Bolt (4 req'd)	59	990-9569	Tie Wrap 9" (2 req'd)
28	238-3106	Nut (4 req'd)	60	995-0424	Tie Wrap 5.5" (6 req'd)
29	238-1714	Lockwasher (4 req'd)	61	234-0610	Connector Cable EM48, EM96
30	995-0424	Flat Washer (4 req'd)	62	238-4008	Y-Splitter EM96

2384025
2384026

