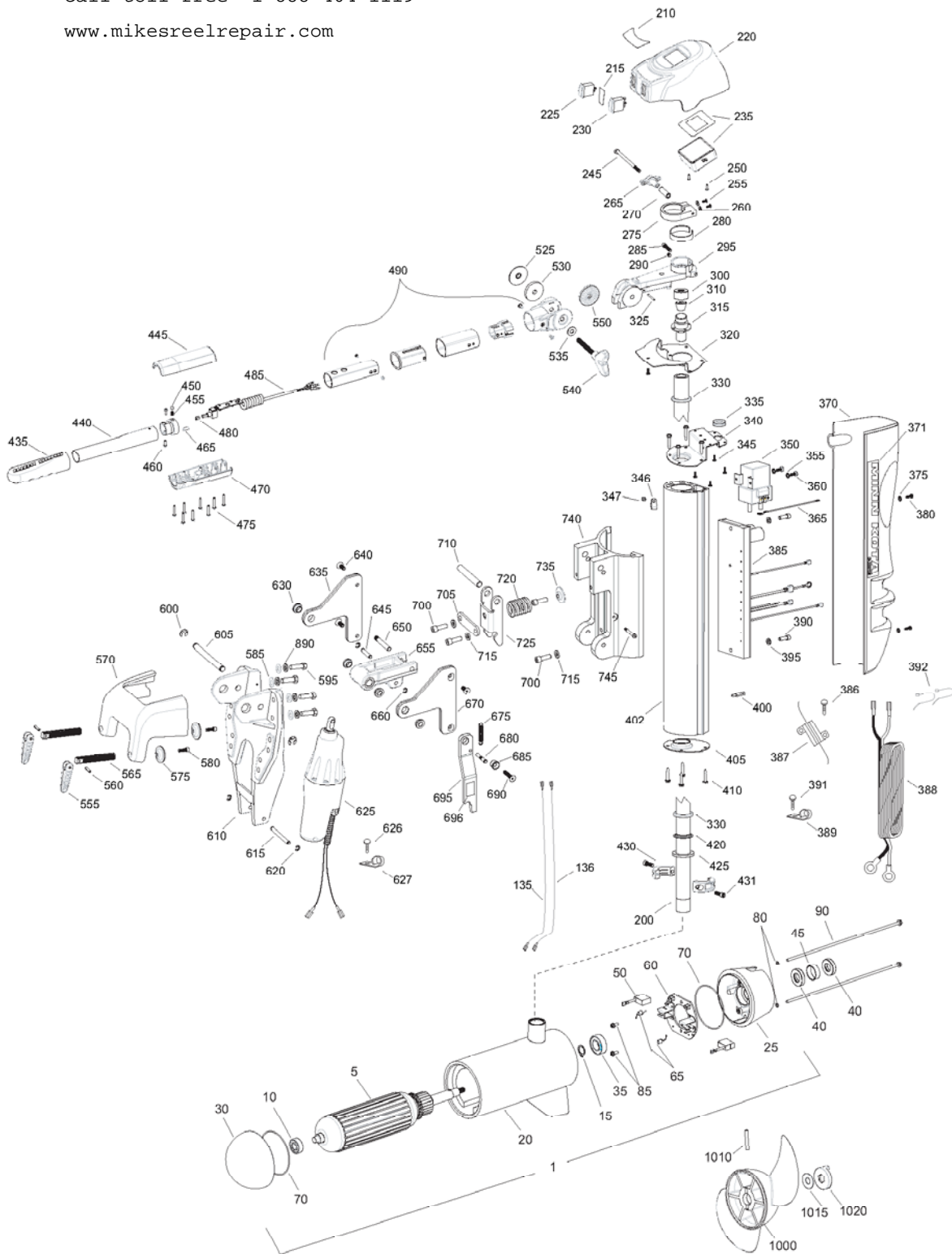


# E-Drive Tiller Steer

2 h.p. 48-volt

for use with motors with serial numbers beginning MKAH  
2-year warranty from the date of purchase

For parts and service  
call toll free: 1-888-404-1119  
www.mikesreelrepair.com



For parts and service  
call toll free: 1-888-404-1119  
www.mikesreelrepair.com

In the U.S.A., replacement parts may be ordered directly from MINN KOTA Parts Dept., 121 Power Drive, P.O. Box 8129 Mankato, Minnesota 56002-8129. In Canada, parts may be ordered from any of the Canadian Authorized Service Centers shown on the enclosed list. Be sure to provide the MODEL and SERIAL numbers of your motor when ordering parts. Please use the correct part numbers from the parts list. Payment for any parts ordered from the MINN KOTA parts department, may be by cash, personal check, Discover Card, MasterCard or VISA. To order call 1-800-227-6433 or FAX 1-800-527-4464. Fuera de los Estados Unidos, consultar la lista anexa para ubicar el Centro de servicio autorizado MINN KOTA. No dejar de incluir el número del MODELO y el número de SERIE del motor para el cual se solicitan las piezas. Usar siempre los números de pieza correctos indicados en la lista de piezas.

Item	P/N	Description	Qty	Item	P/N	Description	Qty	Item	P/N	Description	Qty	Item	P/N	Description	Qty
1	2357000	Motor Assembly	1	380	2332101	Screw, 8-32 x 1/2	2	660	2263006	E-ring, 5/16	4				
5	2-100-210	Armature assembly	1	385	2044003	Control Board, E-drive	1	670	2770802	Link, upper, left side	1				
10	140-011	Bearing, plain end	1	386	2043413	Screw, 4-40 x 3/8	2	675	2042722	Spring, extension	1				
15	788-075	Retaining ring	1	387	2994071	Resistor, E-drive	1	680	2062624	Pin, stabilizer	1				
20	2-200-220	Center housing assembly	1	388	2040605	Leadwire, prime power	1	685	2047320	Bushing, trim arm	1				
25	2-300-210	Brush end housing assembly	1	389	2052512	Cable clamp, 1/2	1	690	2043428	Screw, 5/16-18 x 1 1/2	1				
30	421-310	Plain end housing assembly	1	390	9954533	Screw, 1/4-20 x 3/4 SHCS	2	695	2774309	Arm, stabilizer [695-696]	1				
35	140-013	Bearing, brush end	1	391	2053415	Screw, 8-32 x 3/8	1	696	2045630	Warning Decal	1				
40	880-027	Seal	2	392	9950433	Tie wrap	4	700	9954533	Screw, 1/4-20 x 3/4 SHCS	4				
45	725-097	Paper tube	1	395	9950357	Lockwasher, 1/4	2	705	2041940	Plate, latch, breakaway	1				
50	188-096	Brush	2	400	2042911	Stand-off	1	710	2042616	Pin, upper, breakaway	1				
60	2-600-210	Brush plate assembly	1	402	2046510	Extrusion, main, E-drive	1	715	9950357	Lockwasher 1/4	4				
65	975-041	Brush spring	2	405	2040200	Cap-bottom, E-drive	1	720	2042715	Spring, breakaway	1				
70	701-044	O-ring, motor	2	410	2053413	Screw 10-16 x 1 type AB	8	725	2047200	Latch, breakaway	1				
80	701-009	O-ring, thru-bolt	2	420	2266515	Bearing cone	1	735	2041500	Shim washer, breakaway	1				
85	2053410	Screw, 8-32	2	425	2041700	Washer 1 3/16 x 1 3/4	1	740	2041810	Extrusion, breakaway	1				
90	830-096	Thru-bolt	2	430	2261622	Collar half, alum	2	745	2043504	Bolt, shoulder 1/4-20 x 1 1/4	1				
135	640-030	Leadwire, black	1	431	2263453	Screw, 1/4-20 x 1 SHCS	2								
136	640-130	Leadwire, red	1	■	2990945	Outer handle assembly [435,440]	1								
200	2040211	Tube, Motor	1	435	2070422	Grip	1	■	2991110	Propeller kit	1				
210	2065606	Decal, cover, E-tiller	1	440	2042030	Tube, handle grip	1	1010	2352601	Drive pin	1				
215	2065606	Decal, front, E-tiller	1	445	2040910	Handle, top	1	1015	2091701	Washer, prop	1				
220	2040217	Cover, E-tiller	1	■	2886000	Clamp bracket [450-465]	1	1020	2198401	Nut, nylock, prop, Anode	1				
225	2044022	Switch, Power, E-tiller	1	450	2046000	Ball, detent	1								
230	2044020	Switch, Trim, E-tiller	1	455	2042720	Spring, detent	1								
235	2997400	Display/harness assembly	1	460	2301310	Screw, 8-18 x 1/2	2								
245	2043502	Bolt, 1/4-20 x 4" Hex HD	1	465	2043205	Stop, post	1								
250	2302100	Screw, 6-20 x 1/2	2	470	2040915	Handle, bottom	1								
255	2332100	Screw, 8-32 x 3/8	2	475	2043425	Screw, 8 x 7/8	8								
260	2051717	Washer, #8	2	480	2042705	Spring - knob, E-drive	1								
265	2043430	Knob, clamp-collar	1	485	2044040	Ctrl board, handle assy	1								
270	2047317	Bushing, steering tension	1	490	2990922	Handle assy, outer	1								
275	2040210	Brake, steering	1	525	2053115	Washer, handle assy	1								
280	2043800	Band, friction brake	1	530	2051735	Washer, spacer	1								
■	2774306	Tiller arm assy [285-295,325]	1	535	2051737	Washer, .4 x .875	1								
285	2263453	Bolt 1/4-20 x 1	1	540	2050921	Handle, tension, long	1								
290	2043430	Screw, set - half dog pt	1	550	2050015	Ratchet-disk, handle assy	1								
295	2044306	Arm, tiller, machined	1	■	2881985	Clamp bracket kit [555-595]	1								
300	9950339	Cap, motor fitting	1	■	2880925	Clamp screw kit [555-580 except 570]	1								
310	2382900	Grommet, split	1	600	2043000	E-ring, .500	2								
315	2046201	Bearing race, main E-drive	1	605	2042614	Pin, pivot, upper	1								
320	2041945	Plate, cover	1	610	2041981	Bracket, machined	1								
325	2042620	Pin, spring	1	615	2042612	Pin, lower, actuator	1								
330	2264000	Bearing, steel ball	1	620	2263005	E-ring 5/16	4								
335	2042905	Grommet	1	625	2992802	Actuator assy w/ terminals	1								
340	2040207	Cap-top	1	626	2053415	Screw, 8-32 x 3/8	2								
345	2372100	Screw, 8-18 x 5/8	5	627	2040720	Clamp, cable 1/4	2								
350	2040700	Contact	1	630	2047302	Bearing, flange	4								
355	2261718	Washer, lock - #10	2	635	2774801	Link, upper, right side	1								
360	2223454	Screw, 10-32 x 1/2	2	640	2043420	Screw, 5/16-18 x 3/4	3								
365	2040600	Wire, connecting 10 ga red	1	645	2042610	Pin, upper, actuator	1								
370	2050220	Shield, extrusion, vantage	2	650	2042613	Pin, latch, breakaway	1								
371	2045611	Decal, shield, E-drive	1	■	2774305	Arm assy [655, 630(2)]	1								
375	2371715	Lockwasher, #8	2	655	2044301	Arm- actuator, machined	1								

\* This item is part of an assembly. This item cannot be sold separately due to machining and/or assembly that is required.

P/N 2047101

REV. B 12-06

For parts and service  
call toll free: 1-888-404-1119  
www.mikesreelrepair.com

## CONTROL BOARD WIRING for p/n 2044006

