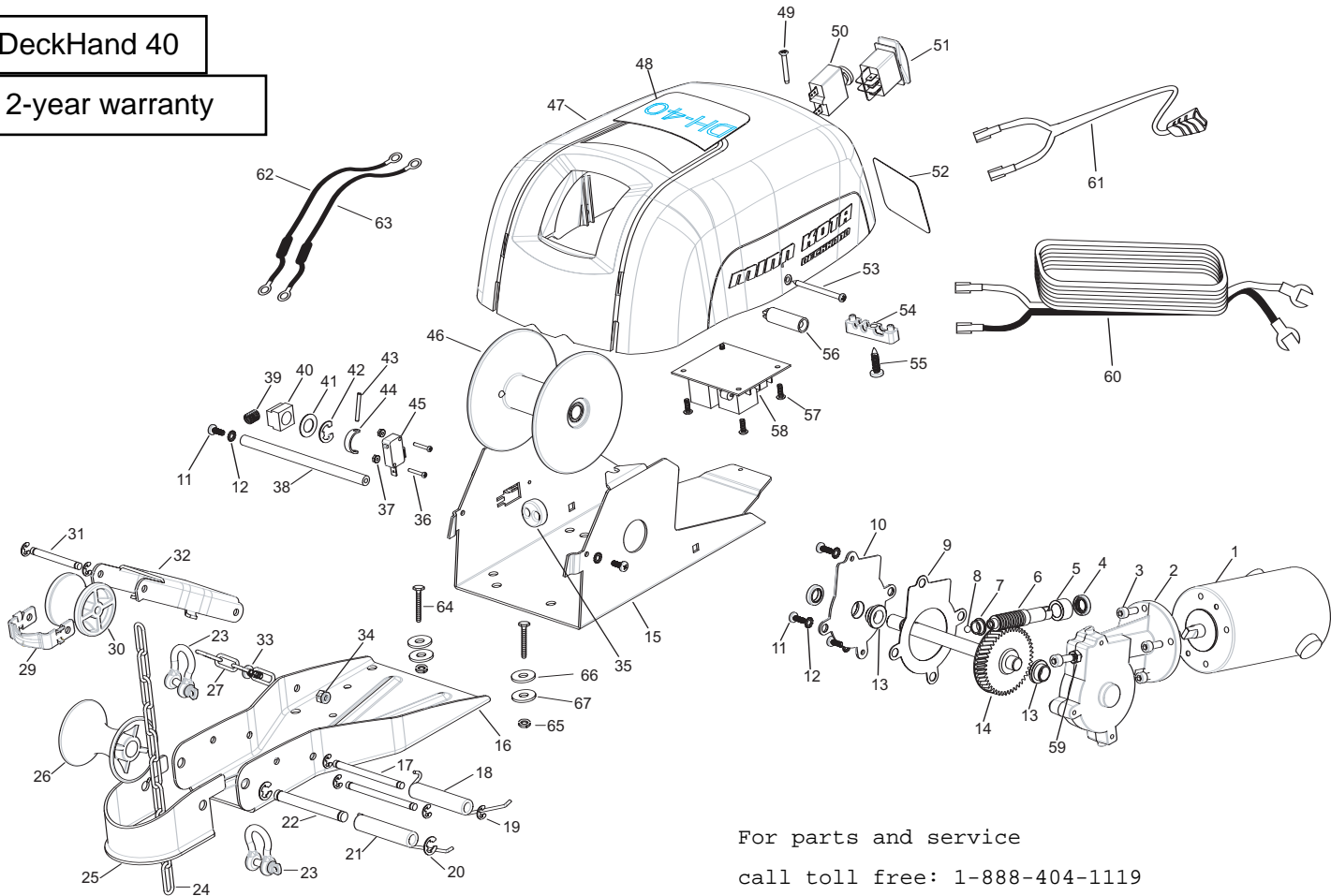


DeckHand 40

2-year warranty



For parts and service  
call toll free: 1-888-404-1119  
[www.mikesreelrepair.com](http://www.mikesreelrepair.com)

# Item Description

|     |          |   |    |          |                                |
|-----|----------|---|----|----------|--------------------------------|
| ■   | 299-7816 | MOTOR/GEAR ASSEMBLY (Includes items 1-10,13,14) |    |          |                                |
| *1  | 237-7802 | MOTOR   |    |          |                                |
| *2  | 237-6502 | GEAR BOX  |    |          |                                |
| 3   | 237-3448 | SCREW M6X1.0 X16mm [5 EA.]                      |    |          | For parts and service          |
| 4   | 880-026  | SEAL [2 EA.]                                    |    |          |                                |
| 5   | 237-0041 | BRONZE BUSHING                                  |    |          | call toll free: 1-888-404-1111 |
| *6  | 237-2238 | WORM GEAR                                       |    |          |                                |
| 7   | 237-7300 | BRONZE BUSHING 3/8" SHAFT                       |    |          | www.mikesreelrepair.com        |
| *8  | 237-6000 | BALL-THRUST                                     |    |          |                                |
| 9   | 237-6915 | GASKET  |    |          |                                |
| 10  | 237-6515 | GEAR BOX COVER                                  |    |          |                                |
| 11  | 222-3455 | SCREW #10-32 X 1/2" [6 EA.]                     |    |          |                                |
| 12  | 226-1718 | WASHER #10 EXT. LW [6 EA.]                      |    |          |                                |
| 13  | 222-7304 | BRONZE BUSHING 1/2" SHAFT [2 EA.]               |    |          |                                |
| *14 | 237-2254 | GEAR SHAFT                                      |    |          |                                |
| 15  | 237-1901 | BASE  |    |          |                                |
| ■   | 299-8410 | DAVIT ASSEMBLY (Includes items 16-22, 25-34)    |    |          |                                |
| *16 | 237-6505 | DAVIT CHASSIS                                   |    |          |                                |
| 17  | 237-2607 | HINGE PIN [2 EA.]                               |    |          |                                |
| 18  | 237-2712 | TORSION SPRING                                  |    |          |                                |
| 19  | 201-3000 | E-RING [6 EA.]                                  |    |          |                                |
| 20  | 226-3010 | E-RING [2 EA.]                                  |    |          |                                |
| 21  | 237-2713 | TORSION SPRING                                  |    |          |                                |
| 22  | 237-2606 | AXLE PIN  |    |          |                                |
| 23  | 237-0806 | SHACKLE [2 EA.]                                 |    |          |                                |
| 24  | 237-0820 | CHAIN   |    |          |                                |
| 25  | 237-1613 | LOWER LINE GUIDE                                |    |          |                                |
| 26  | 237-2311 | ROLLER-LARGE                                    |    |          |                                |
| 27  | 237-0801 | SAFETY LANYARD                                  |    |          |                                |
| 29  | 237-1614 | UPPER LINE GUIDE                                |    |          |                                |
| 30  | 237-2306 | ROLLER-SMALL                                    |    |          |                                |
| 31  | 237-2601 | AXLE PIN  |    |          |                                |
| 32  | 237-4210 | LIFTING ARM                                     |    |          |                                |
| 33  | 237-3402 | SCREW-1/4-20X5/8"                               |    |          |                                |
| 34  | 226-3103 | NUT- 1/4" NYLOC                                 |    |          |                                |
| 35  | 237-3200 | ROPE STOP                                       |    |          |                                |
| 36  | 237-2130 | SCREW-#4-40 X 3/4" [2 EA.]                      |    |          |                                |
| 37  | 237-3100 | NUT-#4-40 KEPS [2 EA.]                          |    |          |                                |
| 38  | 237-1612 | LINE GUIDE                                      |    |          |                                |
| 39  | 237-2700 | COIL SPRING                                     |    |          |                                |
| 40  | 237-0001 | SPOOL BEARING                                   |    |          |                                |
| 41  | 990-051  | WASHER  |    |          |                                |
| 42  | 788-040  | E-RING  |    |          |                                |
| 43  | 209-2601 | DRIVE PIN                                       |    |          |                                |
| 44  | 237-2630 | PIN KEEPER                                      |    |          |                                |
| 45  | 237-4010 | SWITCH  |    |          |                                |
| 46  | 237-7901 | SPOOL W/ROPE                                    | 59 | 237-3105 | HEX NUT M6X1.0                 |
| 47  | 237-0202 | COVER   | 60 | 209-0601 | LEADWIRE                       |
| 48  | 237-5505 | DECAL-TOP COVER                                 | 61 | 237-0703 | CONTROL CORD                   |
| 49  | 237-2123 | SCREW-#8-32 X 1.25"                             | 62 | 237-0704 | JUMPER WIRE #20GA BLUE         |
| 50  | 237-8203 | CIRCUIT BREAKER                                 | 63 | 237-0706 | JUMPER WIRE #10GA RED          |
| 51  | 237-4001 | SWITCH  | ■  | 299-4853 | BAG ASSEMBLY                   |
| 52  | 237-5504 | DECAL- MFR. NOTICE                              | 64 | 215-3501 | 5/16" -18 BOLT [8 EA.]         |
| 53  | 237-2122 | SCREW-#10-16 X 2 1/2" [2 EA.]                   | 65 | 215-3100 | NUT- 5/16-18" [8 EA.]          |
| 54  | 222-2905 | STRAIN RELIEF                                   | 66 | 230-1720 | WASHER RUBBER [8 EA.]          |
| 55  | 237-3446 | SCREW- 1/4-20 X 1" [2.EA]                       | 67 | 215-1726 | WASHER 5/16" [8 EA.]           |
| 56  | 237-2920 | STANDOFF [2 EA.]                                |    |          |                                |
| 57  | 237-2100 | SCREW- #8-10 X 5/8"[4 EA.]                      |    |          |                                |
| 58  | 237-8225 | CIRCUIT BOARD ASSEMBLY                          |    |          |                                |

\* This item is part of an assembly. This item cannot be sold separately due to machining and /or assembly that is required.

