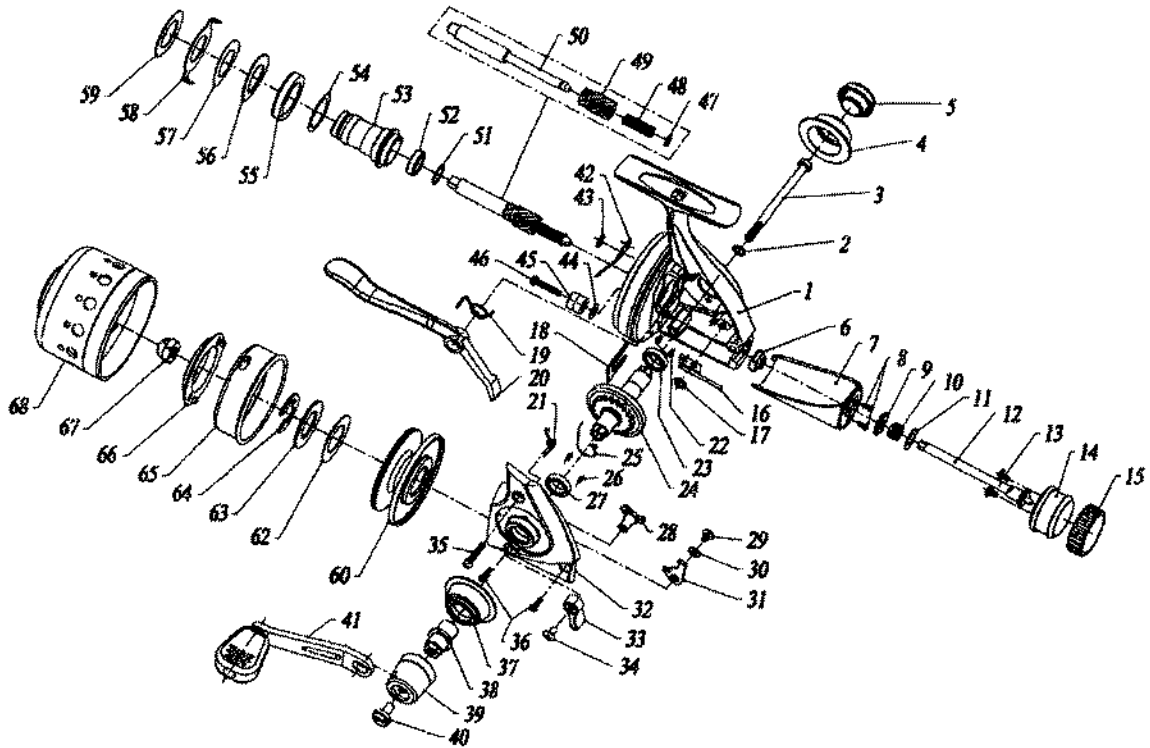


**CLOSED FACE SPINNING REEL**

**Underspin 80XC/120XC**



Key No.	Parts No.	Parts Name
1	W32-5602	BODY
2	W31-7001	DRIVE SHAFT WASHER
3	W31-7101	DRIVE SHAFT
4	W31-5002	SIDE RING
5	W31-7202	HANDLE SCREW CAP
6	W32-5701	DRAG SHAFT HOLDER
7	W32-5802	REAR COVER
8	W32-5901	REAR COVER SCREW
9	W32-6001	CLICK GEAR
10	W32-6101	DRAG KNOB SPRING
11	W32-6201	DRAG SHAFT WASHER
12	W32-6301	DRAG SHAFT
13	W32-6401	DRAG KNOB SCREW
14	W32-6502	DRAG KNOB
15	W32-6602	O RING
16	W32-6701	CLICK SPRING A
17	W32-6801	CLICK SPRING RET A
18	W32-6901	PINION RET
19	W32-7001	CASTING TRIGGER SPRING
20	W32-7202	CASTING TRIGGER
21	W32-7301	A/R CAM SPRING
22	W32-7401	SIDE RING SCREW A
23	W31-6001	DRIVE GEAR BUSHING
24	W32-7501	DRIVE GEAR
25	W31-6501	A/R PAWL SPRING
26	W32-5901	SIDE RING SCREW B
27	W31-6001	DRIVE GEAR BUSHING
28	W32-7601	A/R CAM
29	W32-7701	A/R PAWL SCREW
30	W32-7801	A/R PAWL WASHER
31	W32-7901	A/R PAWL
32	W32-8102	SIDE COVER
33	W31-5404	A/R LEVER
34	W31-5301	A/R LEVER SCREW
35	W32-8201	SIDE COVER SCREW A
36	W31-5201	SIDE COVER SCREW B
37	W31-5002	SIDE RING
38	W32-0701	HANDLE METAL
39	W32-0802	HANDLE STAND
40	W32-0901	HANDLE SCREW

Key No.	Parts No.	Parts Name
41	W32-1004	HANDLE
42	W32-8301	CLICK SPRING B
43	W31-7901	CLICK SPRING RET B
44	W32-8401	CLICK SPRING WASHER
45	W32-8501	DRAG GEAR
46	W32-8601	DRAG GEAR WASHER
47	W31-8001	SPRING RET
48	W31-8101	MAIN SHAFT SPRING
49	W32-8801	PINION GEAR
50	W31-8301	MAIN SHAFT
51	W31-8501	MAIN SHAFT WASHER
52	W31-6011	BUSHING
53	W32-9001	SPOOL METAL
54	W31-8901	SPOOL METAL WASHER
55	W32-9101	DRAG PLT
56	W31-8901	DRAG SPRING WASHER A
57	W31-8903	DRAG SPRING WASHER B
58	W31-9002	EARED WASHER
59	W31-9101	DRAG WASHER A
60	W31-9201	SPOOL
62	W31-9101	DRAG WASHER B
63	W31-9501	KEY WASHER
64	W31-9601	SPOOL RET
65	W31-9801	ROTOR
66	W32-0101	LINE STOPPER
67	W32-0301	ROTOR NUT
68	W32-9302	FRONT COVER

**SPECIAL PART FOR US120XC**

Key No.	Parts No.	Parts Name
1	W32-5502	BODY
20	W32-7102	CASTING TRIGGER
32	W32-8002	SIDE COVER
50	W31-8401	MAIN SHAFT
53	W32-8901	SPOOL METAL
60	W31-9401	SPOOL
65	W32-0001	ROTOR
66	W32-0201	LINE STOPPER
68	W32-9202	FRONT COVER